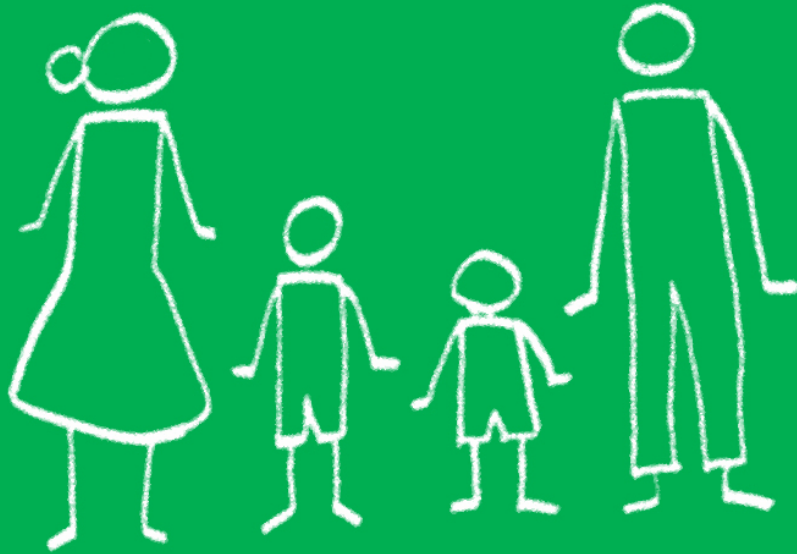


# The problem Scenario



This is Monu's happy family...

Mama, Sonu, Monu and Papa



Sonu is the elder one  
while Monu is the younger one.



Monu is 5 years old.

He has **started** going  
to his kindergarten school



Monu has hearing disability.

He wears a hearing aid.



This hearing aid works coupled together with an implant that was surgically placed inside his ear a few years back.



3 years back



One day,  
when mama had left monu alone







One day,  
when mama had left monu alone



One day,  
when mama had left monu alone



Sonu started shouting aloud  
and created so much noise



Sonu started shouting aloud  
and created so much noise



Sonu started shouting aloud  
and created so much noise



Sonu started shouting aloud  
and created so much noise



Sonu started shouting aloud  
and created so much noise





Sonu started shouting aloud  
and created so much noise

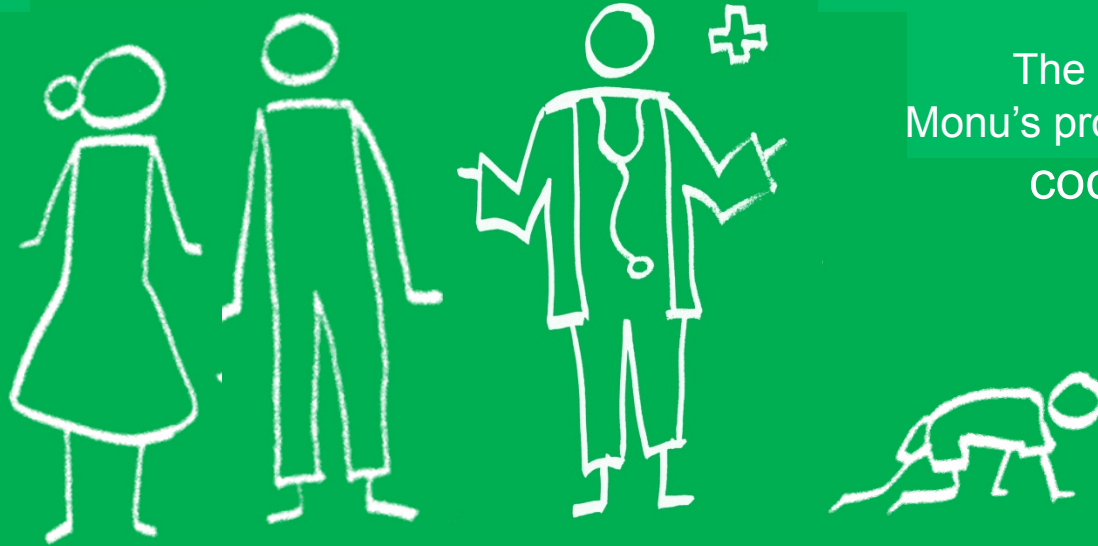




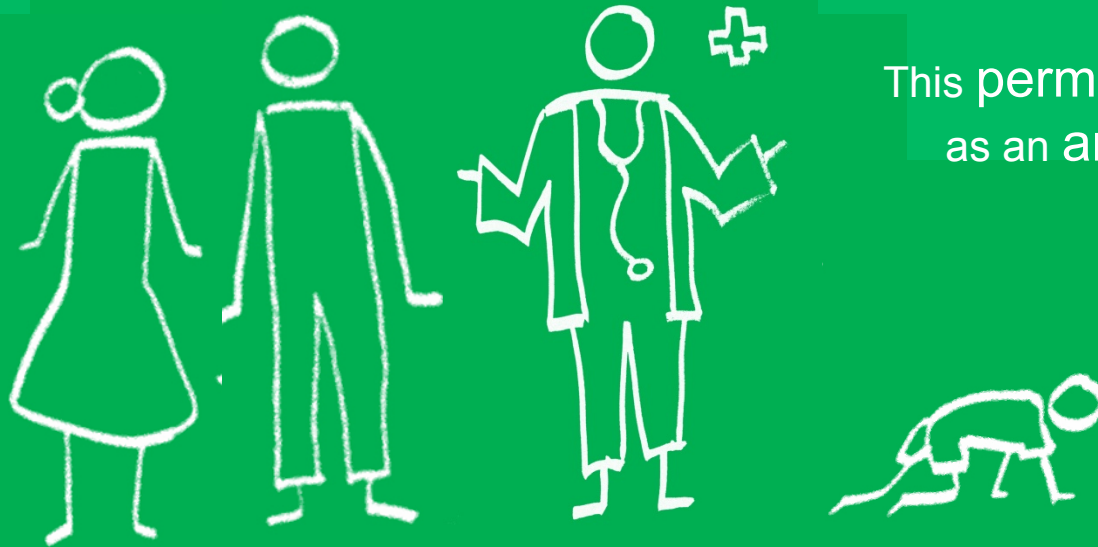
Inspite of Sonu shouting  
and disturbing,

Monu never reacted.

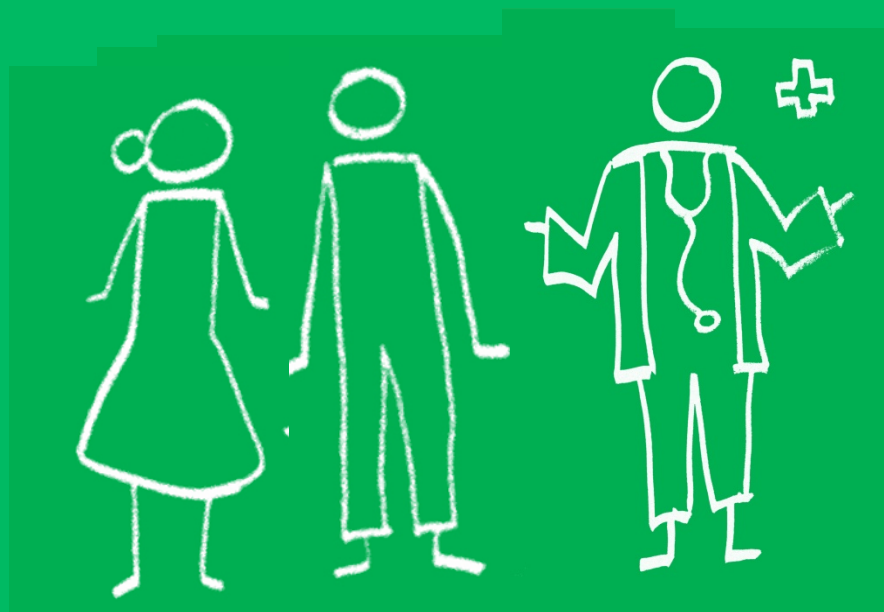
Mom and Dad noticed this  
and took him to the Doctor.



The Doctor analyzed  
Monu's problem & recommended a  
cochlear implant.



This permanent implant would act  
as an artificial ear to Monu.

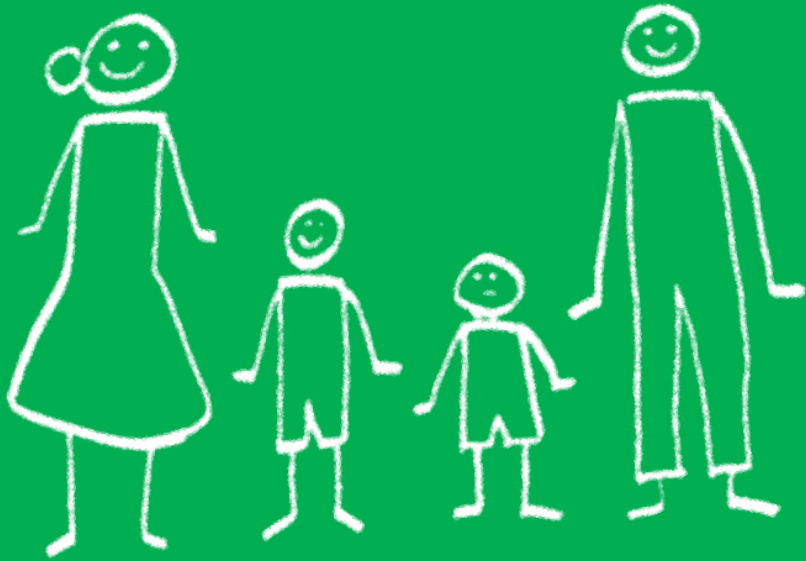






Monu's cochlear implant has been helping him to listen to the world.





The whole family is happy for  
Monu  
and thankful to the doctor.



Monu can  
respond to speech.







Monu can  
respond to speech.





Monu can  
respond to speech.





Monu can  
respond to speech.





He can enjoy  
beats/rhythm.



He can enjoy  
beats/rhythm.



He can enjoy  
beats/rhythm.





He can enjoy  
beats/rhythm.















However, he cannot understand  
a song's melody no matter  
how hard he tries to.





However, he cannot understand  
a song's melody no matter  
how hard he tries to.



Melody can get irritating





and not understandable.





and not understandable.









Monu finds it hard to listen to  
Radio, tv, songs etc.,





Many people say he lacks expression when he talks.

He does not understand why...  
Is it because of his disability?













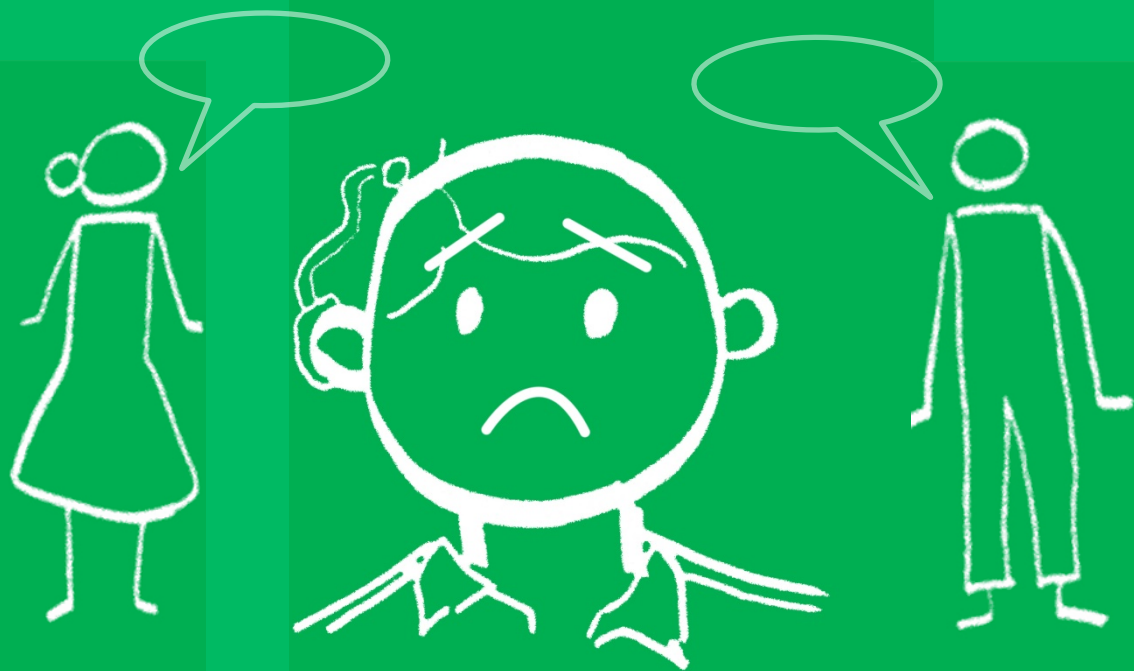














Monu also has another problem.

He cannot differentiate between  
the voices of people.



The doctor says that Monu should go through serious auditory training on a daily basis.





Solution ■