

Sleep is on the way

A Music Video

Arun Kumar Kaushik
IDC, IIT Bombay

sleep is on the way a music video

Goals

To create an animated music video for an existing song.

Become familiar with compositing software such as After Effects and
3D Packages such as 3D Studio Max

sleep is on the way a music video

Song:

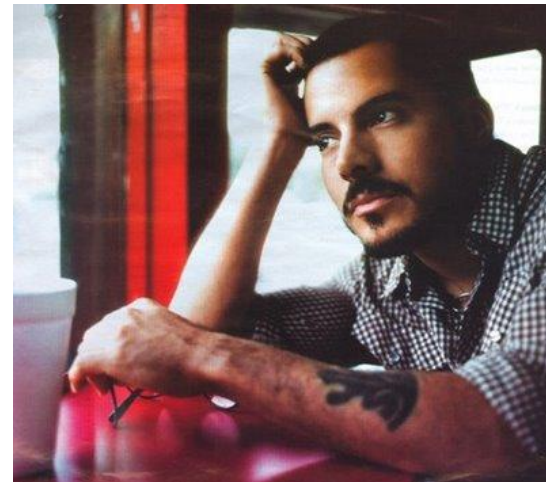
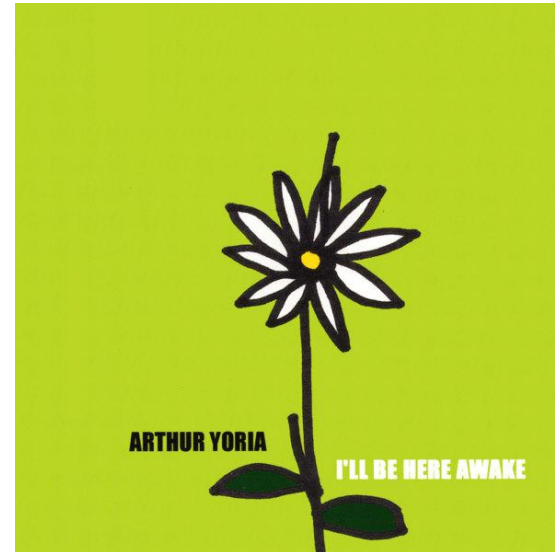
Name: Sleep is on the way

Album: I'll Be Here Awake

Artist: Arthur Yoria

Style: Stoner Pop

Copyright: Creative Commons



sleep is on the way a music video

Lyrics:

Face the grim rim of your soul bird,
Taste the fist when I get pissed,
Made a wish and now its over,
Took the blame but who do you turn to now?

The feeling is not so intense,
It only hurts now and then,
The owner says it can stay,
Sleep is on the way

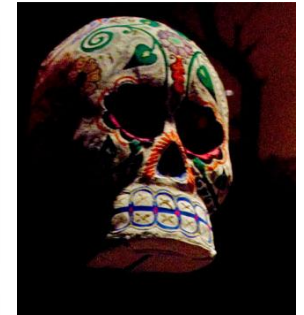
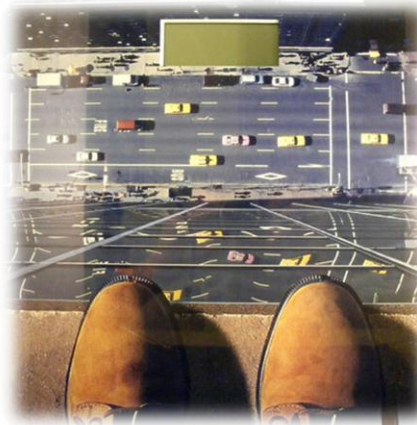
So if you would be gentle,
Say your name just one more time,
Take me home this will be simple,
Once again but who do you turn to now?

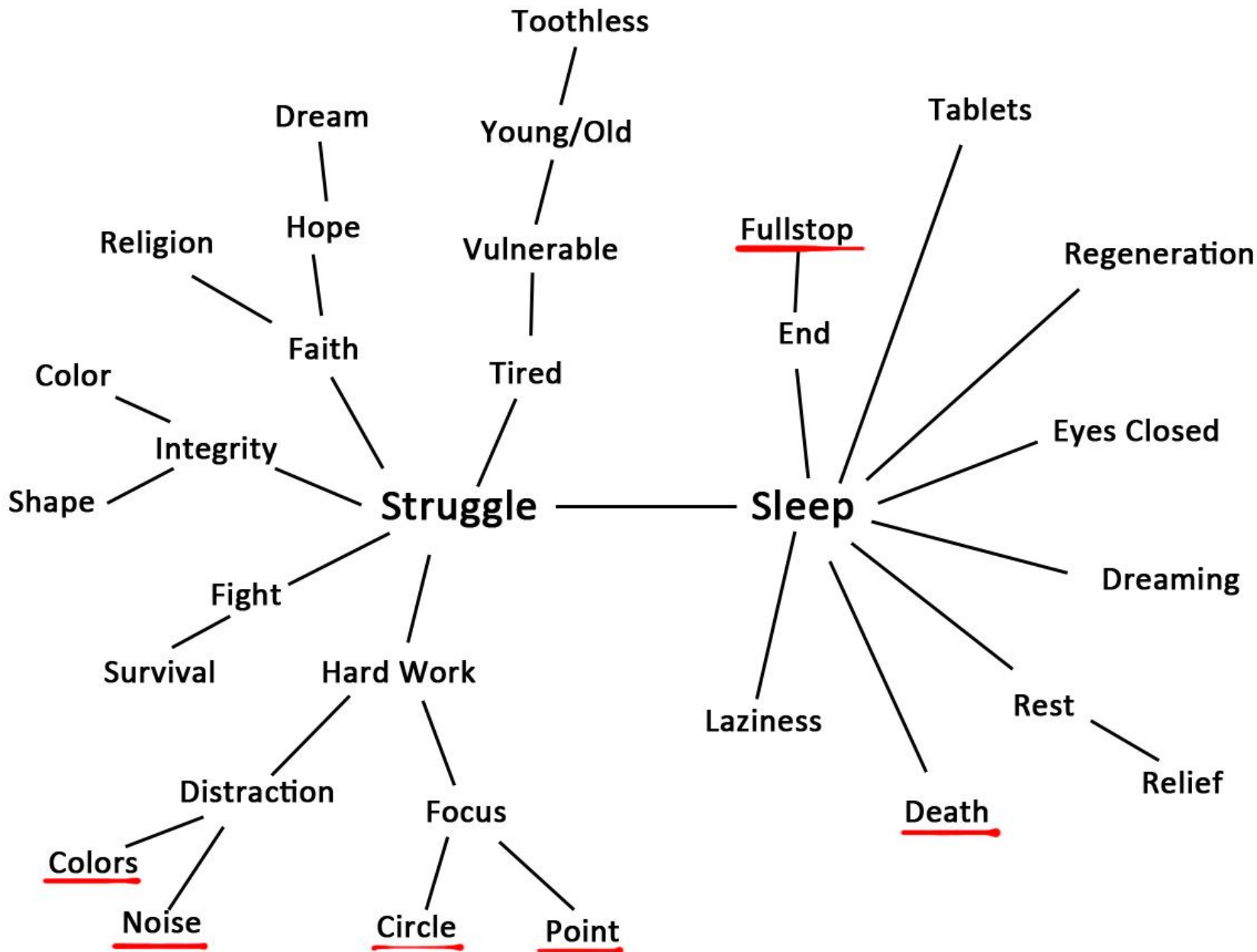
sleep is on the way a music video

Feel of the Song:

Slightly up-tempo, but sobering song about struggling to achieve something

Chorus is very ethereal - it somehow combines sadness and optimism





sleep is on the way a music video

Interpretation:

Taking the allusion to sleep to mean death, I interpreted the song to be about death's inevitability.

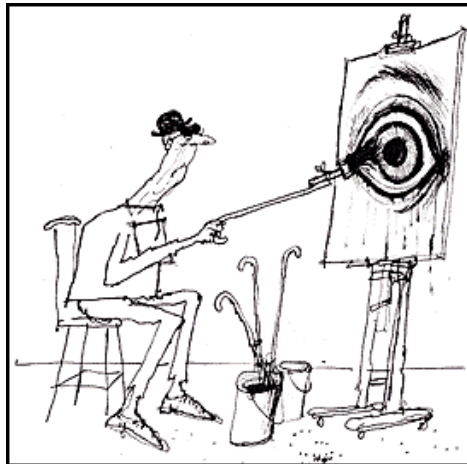
It is bittersweet in its take, with the songwriter referring to a struggle in the chorus - it might be the struggle one goes through in life trying to avoid death only to have to face it in the end, and also the eventual death as something as restful as sleep.

sleep is on the way a music video

Style

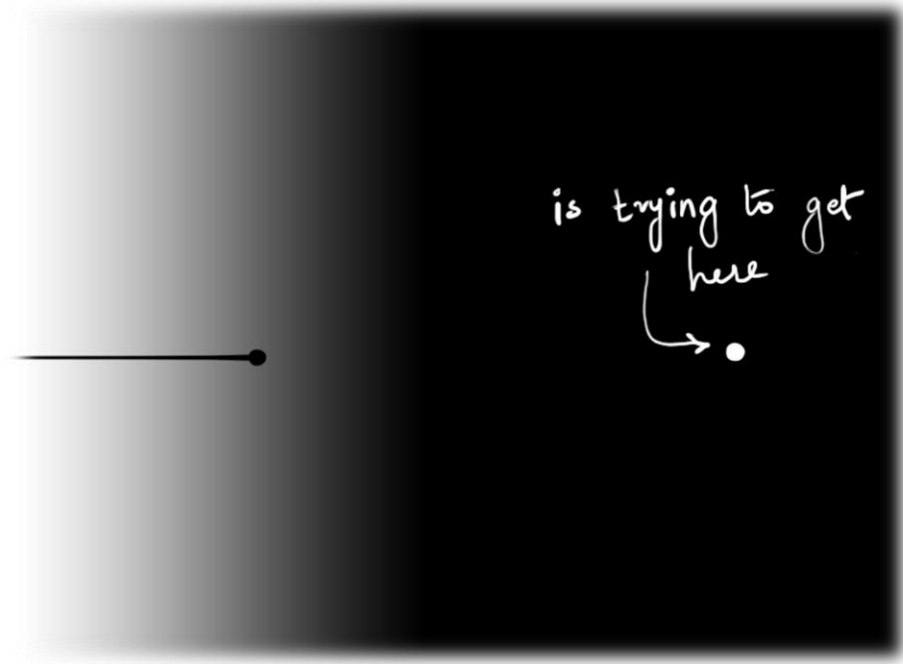
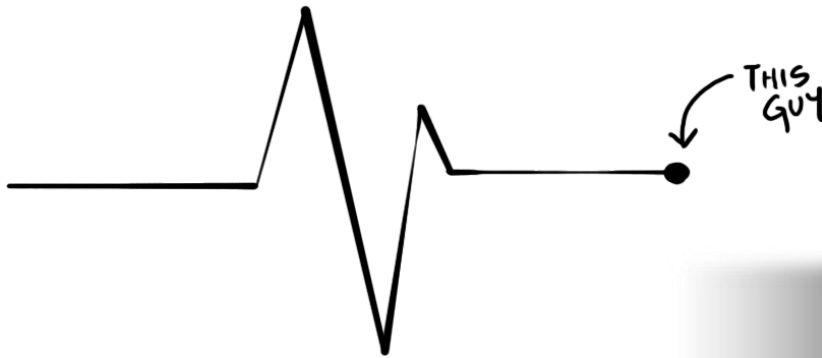
Cutout animation (Terry Gilliam's Monty Python animations)

Animated illustrations in a scratchy style like Ronald Searle



sleep is on the way a music video

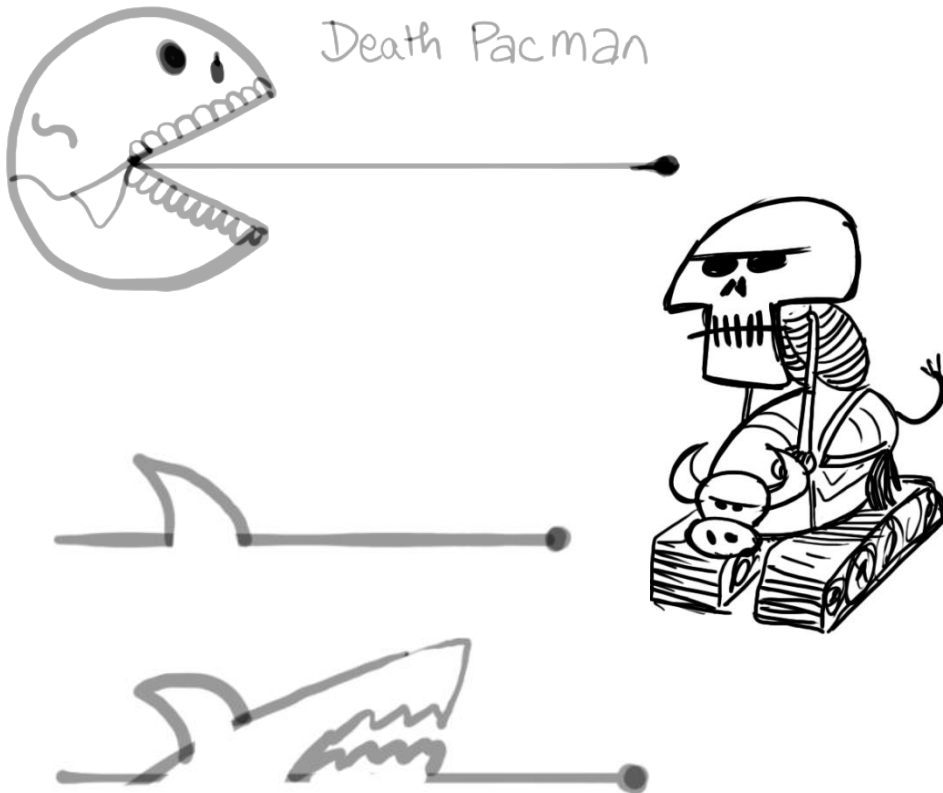
Concepts:



sleep is on the way a music video

Concepts:

... but agents of death are creating obstacles



sleep is on the way a music video

Concepts:

The film shows how the dot evades death in various forms



sleep is on the way a music video

Reasoning:

Many schools of philosophy regard life itself as meaningless (nihilism, absurdism) or to be meaningless without goals (existentialism). I particularly wanted to explore the way we (sometimes actively) run away from death and all its agents (ageing, disease, psychological agents such as failure, depression) without realizing that we are going to 'fall asleep' sometime anyway. Once we stop existing, what meaning does all this running have?

sleep is on the way a music video

Screens from the final film:

