



# **1. FEEDBACK AND OBSERVATIONS**

**collected on the Colour and Texture samples**





# FEEDBACK AND OBSERVATIONS

collected on the Colour and Texture samples

Based on:

- **Aesthetic impact** generated by the sample (Composition & Balance)
- **Emotional impact** generated by the sample (Theme elicitation)
- **Visual effect** (Colour dynamics)
- **Creativity** (Use of imagination)
- **Technique** (Media used to create the composition)
- **Application** (Use of texture for any specific utility)





**A few examples...**





## DANCING DOTS

- Beehive, colourful pockets of people, top view of a colourful tribal village, scatter plot diagram, top view of people dancing garba wearing colourful ghagras
- Good example of domination in a composition
- Balanced and interesting composition, good use of pattern and rhythm
- Can adorn wall as a painting itself – to add interest to a blank wall.
- Planned brush strokes for the circles, the dot pattern created using a round surface such as a pen cap, pencil end etc.

Aesthetic impact (Composition and balance)	Emotional impact(theme elicitation)	Visual effect (color dynamics)	Creativity (use of imagination)	Application (interior, exterior spaces)
balanced form and color, Composed well, rhythm pattern depth	dreams and imagination, peaceful, water, transparent.	Concentration, bright and colorful colors, 3d in terms of elements in different size, visual texture	using circles creates imagination, leather feel because of small dots	children's room wall, medical purpose animation, can be used as a fabric,





## SECOND NATURE

- Nature, leaves, flora , collage
- Soothing natural colours, bright yet natural and open feel
- In spite of clutter and chaos, there is a pleasing effect to the entire composition
- Can go as book covers of collectables such as visitors book, personal diaries etc on handmade paper.
- Fabric pattern for curtains on semi transparent material / as a second curtain embellishing a thicker fabric.
- Created using dried / fresh leaves, flowers and twigs, use of natural shades and planned superimpositions.

Aesthetic impact (Composition and balance)	Emotional impact(theme elicitation)	Visual effect (color dynamics)	Creativity (use of imagination)	Application (interior, exterior spaces)
Random movement, Not well done, environment green imagine texture	time season, nature or season	time random, ethnic colors, refreshing	Leaves over time, mildly imaginative, interesting texture	Office wall, reception and living spaces, Curtains, table ware, exteriors, privacy screen since transparent





## HEAVY METAL

- Metallic, embossed, embedded, rustic yet techno in its appeal
- Dark, deep and frozen, lack of flow, composition gives a feel of rigidity.
- Fossiled feel, as though trying to capture some thoughts for permanence,
- Wall texture for the room of a heavy metal enthusiast, music studio of a rock artist, disks etc
- Use of metallic inks, buttons, metal pieces, beads, rings etc.

Aesthetic impact (Composition and balance)	Emotional impact(theme elicitation)	Visual effect (color dynamics)	Creativity (use of imagination)	Application (interior, exterior spaces)
Unity and merging, well composed,	Ethnic diwali, seems morbid remind one of graves, earthy look	vertical movement, dark monsoon colors, dull, warm and cool colors, Ariel view of volcano, forest	Shiny colors buttons of different shape, ground satellite picture	Apparel saris Exteriors, pubs and discs with artificial lighting





## PEACOCK DANCE

- Peacock foliage, glaciers forming patterns in water
- Has a flow that has a dancing quality to the composition. But the flow is also restricted within the loops forming in many places. Seems to denote flow within limits.
- Could be wall décor for a meditation room, symbolic of ones state of mind. (as though urging people to break free from the loops and flow more freely)
- Use of POP to create the substrate pattern and brush strokes guided by the pattern formed, deliberately left unformed in places.

Aesthetic impact (Composition and balance)	Emotional impact(theme elicitation)	Visual effect (color dynamics)	Creativity (use of imagination)	Application (interior, exterior spaces)
Water, rhythm,	Water flow, flow cool, snow mountains, shadow of cloud and mountains,	Flow, dull, slush and mud, very dynamic	Poor imagination, pattern of pop is interesting	veneers





## PURPLE HAZE

- Blotchy, heavy but not dense,
- The choice of colour has a rich feel but the texture being big would have impact only on a large space/canvas.
- Could be wall texture for a large private room having a ethnic and traditional décor.

Aesthetic impact (Composition and balance)	Emotional impact(theme elicitation)	Visual effect (color dynamics)	Creativity (use of imagination)	Application (interior, exterior spaces)
Non descriptive, negative	Low, party mood	Vibrant colors, copy or ink smudgy finger prints, inverted image	non	Furnishings for restaurant





## LOVE FOR PEACE

- White roses, quilled pattern, has a 3D feel, Peaceful, pleasing and pretty, sober yet intriguing.
- The red splatter creates an interest by highlighting the white repetitive pattern.
- Could be a wall décor for a high end florist gallery, could be a decoration for a wedding hall (forming the main backdrop)

Aesthetic impact (Composition and balance)	Emotional impact(theme elicitation)	Visual effect (color dynamics)	Creativity (use of imagination)	Application (interior, exterior spaces)
Swirls and curls well composed	Peace with love	Subtle self print	Use of paper to create texture	Wedding card, fabric furnishing, wall





## SWIRLING SONGS

- Swirls, ornate pattern, pleasing, light, sober
- The slightly embossed swirls on the light green textured background creates a two layered effect.
- Could be ideal for a separating curtain, wall décor for a space that needs a calm and light ambience, hotel lobbies, spa etc, bathroom tiles
- Background texture created using stencils and ornate patterns embossed on them spontaneously.

Aesthetic impact (Composition and balance)	Emotional impact(theme elicitation)	Visual effect (color dynamics)	Creativity (use of imagination)	Application (interior, exterior spaces)
Symmetric, harmonious and pleasant, no element stands out	Calm and artistic, classical	Soothing, floral colors	Imaginative and spontaneous	Interiors and surfaces, furnishings



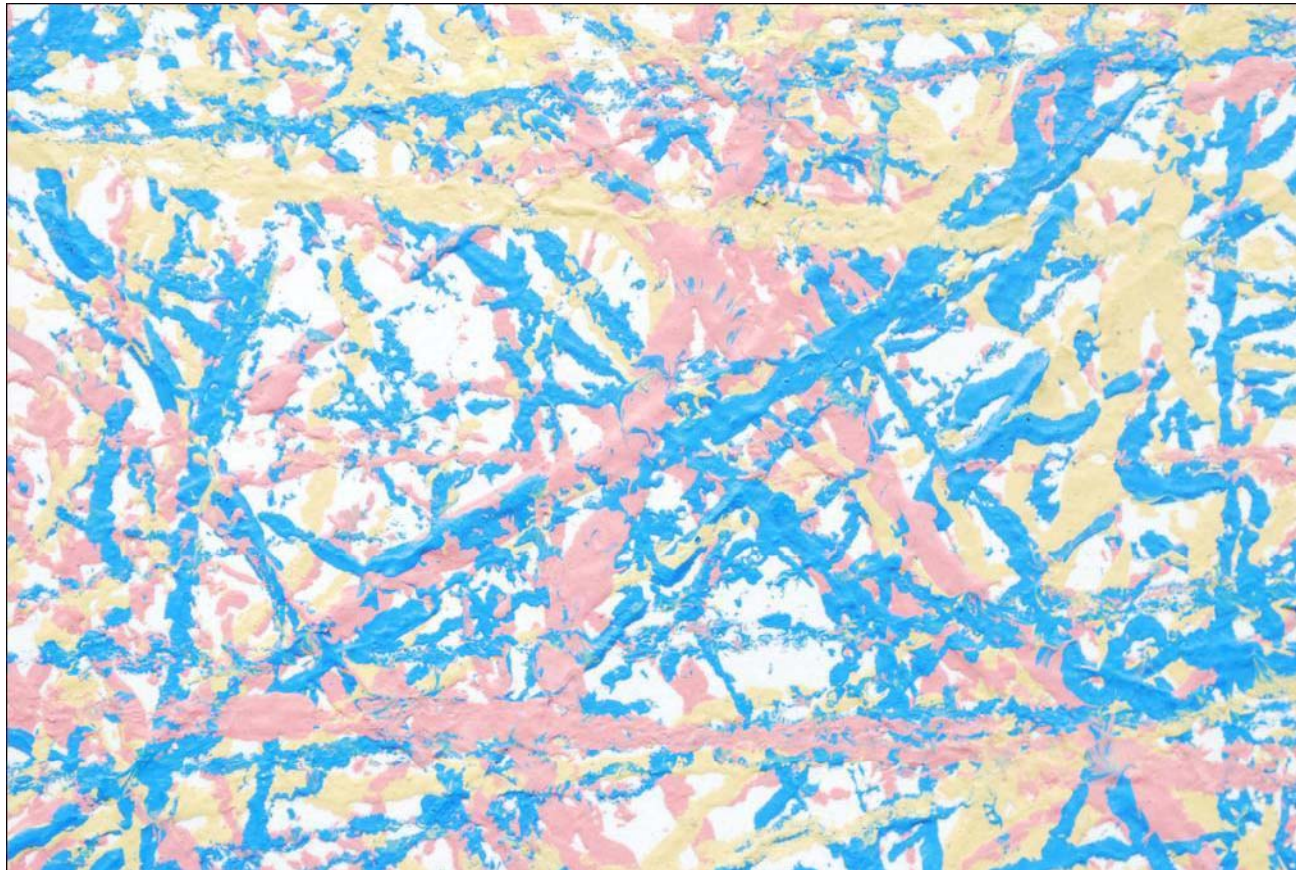


## MUTED CONVERSATION

- Muted composition, not having any specific definition, both colour and pattern wise.
- Overall subdued feel, gradation of colours, though ranging from dark to light, merge into each other easily.
- Wall décor for a serious ambience like office room, primary wall of a drawing room; embellished with contrasting furniture and wall hangings.

Aesthetic impact (Composition and balance)	Emotional impact(theme elicitation)	Visual effect (color dynamics)	Creativity (use of imagination)	Application (interior, exterior spaces)
linear	earthy	Tree barks	Splash of color	Roofing, office walls, fabrics





## PASTEL PARADISE

- Pastels, light, cheerful, spontaneous, youthful, Interesting use of linear brush strokes
- Cluttered yet not harsh due to choice of colours.
- Wall décor for kids room, shops selling children furniture or room concepts , theme restaurants to create cheerful light ambience.
- Random paint strokes over white substrate

Aesthetic impact (Composition and balance)	Emotional impact(theme elicitation)	Visual effect (color dynamics)	Creativity (use of imagination)	Application (interior, exterior spaces)
balanced	Dynamic, child art, kids/ youth feel, cheerful	Not directional, soft and pastel, subtle colors but contrast is evident,	Random, spontaneous	Kids room, smaller areas of children's clothing for detailing, tiles, bath tubs, kids carpeting





## FROZEN FOOTPRINTS

- Footprints, fossiled feel, embossed, archaic, Frozen thought,
- Background ash colour creates a serious feel to the entire composition.
- Unable to determine any specific reason behind the composition, looks more experimental in terms of medium and technique.
- Pencil shavings pasted on textured substrate, embellished further with glitter paint

Aesthetic impact (Composition and balance)	Emotional impact(theme elicitation)	Visual effect (color dynamics)	Creativity (use of imagination)	Application (interior, exterior spaces)
Asymmetric	Static, brings back old memories of glitter glue art classes, juxtaposed, oxymoronic	Metallic and pencil, silver dust icing on a bad patch	Creative in terms of technique	lounge





## DESERT DUNES

- Warm, hazy, rough, strewn feel, serious, desert sand, sand dunes creating patterns with the winds, remnants of a campfire, volcano ashes
- Handmade paper texture, carpets

Aesthetic impact (Composition and balance)	Emotional impact(theme elicitation)	Visual effect (color dynamics)	Creativity (use of imagination)	Application (interior, exterior spaces)
balanced	Soil, wood bark of a tree, old leaves school, warm woody feel, forest fire ambers	Fresh and earthen Warm colors		Gift wrapping paper, sponging , wall textures in different colors





## DARK DAYS

- Dark, menacing, disturbing, unpleasant, destruction, burnt, charred
- A place marred after fire, tar on the road,
- Doesn't seem like a planned composition
- Can be used to create the above feel in a space such as 'haunted house' etc. in an amusement park.

Aesthetic impact (Composition and balance)	Emotional impact(theme elicitation)	Visual effect (color dynamics)	Creativity (use of imagination)	Application (interior, exterior spaces)
	Burnt and charred, night stars, dark and vicious	Dark, road tar, burnt ash		Camouflaging recording room, dark room, theme park



## COLOURS OF FREEDOM

- Colours of freedom, Spontaneous, playful, random, fun, earthy ethnic colours
- Planned splatter of colours to create a feel of vibrancy and freedom
- Compound wall of a school/ playschool
- Basic coloured substrate with splatter of multi colours

Aesthetic impact (Composition and balance)	Emotional impact(theme elicitation)	Visual effect (color dynamics)	Creativity (use of imagination)	Application (interior, exterior spaces)
Definite direction and gradation	Patriotism, holy splashes of color	Bright, Indian colors, ethnic yet contemporary	Splash of colors, spontaneous, interesting technique	Art class interiors, blow painting, relating to kids





## EVOLUTION

- Open ended, wise, evolving, fractal, abstract, opening up, expanding
- Very interesting use of colours, contrasting yet deep
- Has the feel of something starting from nothing and expanding into the universe into something meaningful
- Has the quality of a painting / wall hanging that can enhance a plain wall of a lobby/conference room/drawing room etc.
- Painted and scored with multiple objects to create different kinds of textures.

Aesthetic impact (Composition and balance)	Emotional impact(theme elicitation)	Visual effect (color dynamics)	Creativity (use of imagination)	Application (interior, exterior spaces)
Form is prominent then texture and color, balanced but not stable, golden spiral	Alice and wonderland, spiraling in space, psychedelic	Repetition of this pattern will lead to a visual texture		Kinder garden wall, skirting of dance floors



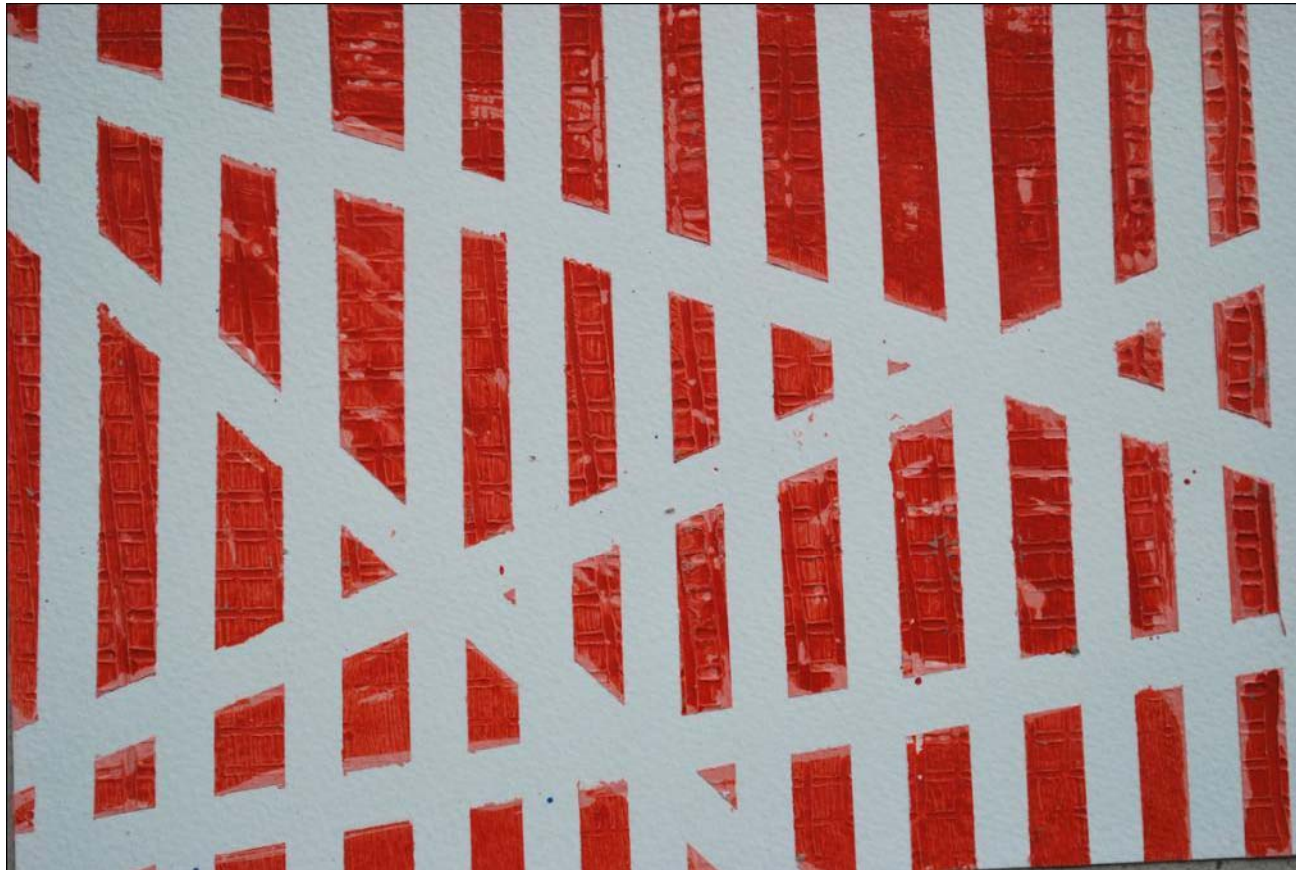


## SILENT WATERS

- Deep, water, dense, silent, meditative, velvetish, serious, quiet but loaded
- There is a dense feel to the whole composition due to use of dark blue and black enhancements
- There is a quite seriousness about the composition which suggests that it is not as silent as it seems
- Upholstery, car furnishing, etc.
- Embossed substrate creating wedges for the dark outlines

Aesthetic impact (Composition and balance)	Emotional impact(theme elicitation)	Visual effect (color dynamics)	Creativity (use of imagination)	Application (interior, exterior spaces)
even lines,	Calm and serene environment	Colors of the sea,		Wall texture, textile print for T shirt, car door mat

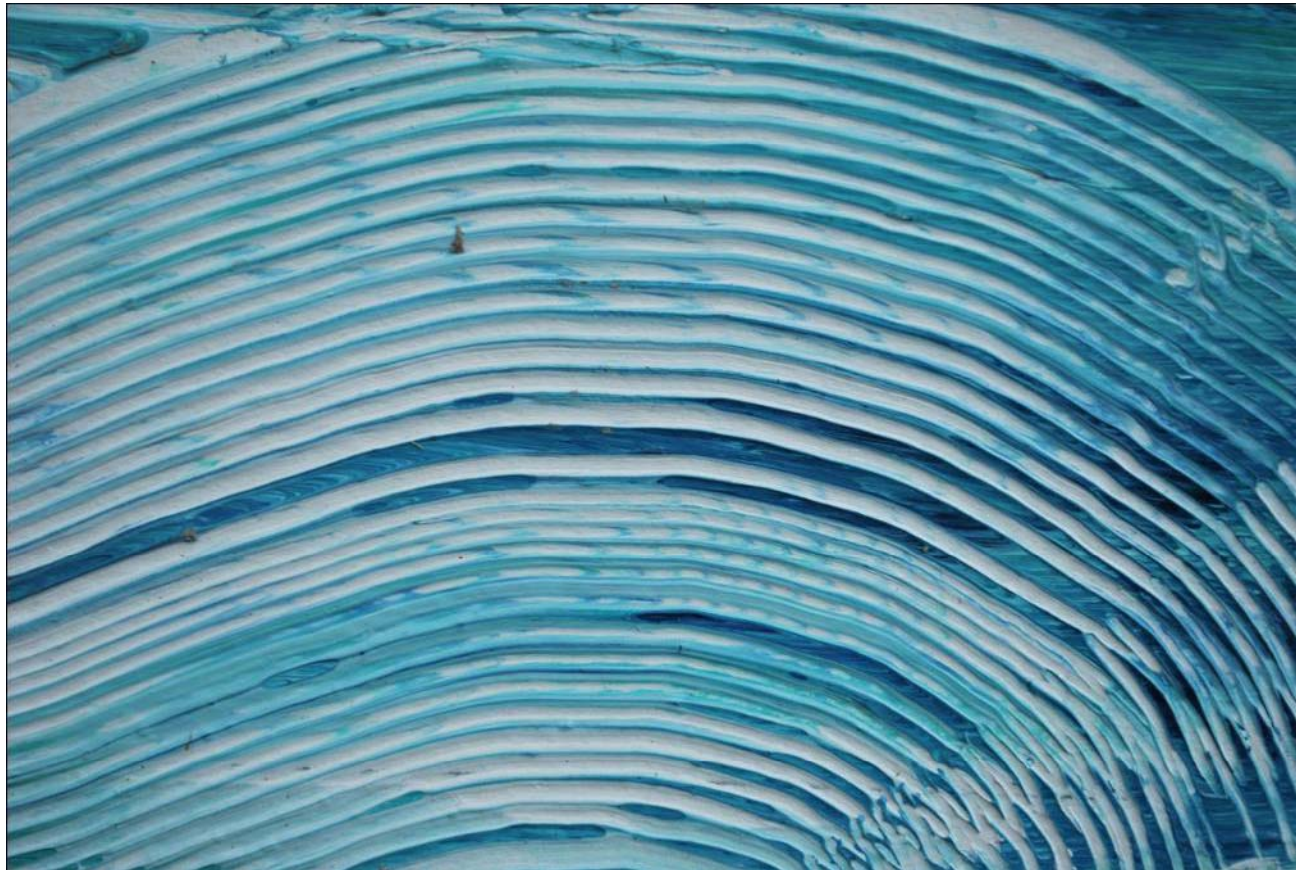




## WATCH OUT!

- Railway crossing, tracks, pathway, fire engine, signage, graphical, bold, attention seeking
- Lines that seem to make a statement of sorts.. Partly disturbing due to the criss cross in places.
- Could be used as an example for some visual exercise for design and composition., or on a wall or surface that needs to catch immediate attention, such as danger (do not touch), beware etc.
- Uniform brush lines over stencils planned to create the white dividers on the substrate

Aesthetic impact (Composition and balance)	Emotional impact(theme elicitation)	Visual effect (color dynamics)	Creativity (use of imagination)	Application (interior, exterior spaces)
Well composed	Bars not very viewer friendly, closed, signage's	Bold, graphic in nature		Door graphics , can be used for danger areas



## AQUA RINGS

- Annual rings of a tree cross section, finger prints, fan, part of a series of concentric circles, ripples in water
- Pleasing composition, cool colours, There is a certain rhythm to the composition.
- Could be used as a round table top pattern made of fiber material. Could add colour to restaurants / pool side restaurants etc
- Suitable for bathroom tiles due to cool colours, veneer pattern
- Base painted with shades of blue and scored deliberately with an object to create concentric arcs / circles

Aesthetic impact (Composition and balance)	Emotional impact(theme elicitation)	Visual effect (color dynamics)	Creativity (use of imagination)	Application (interior, exterior spaces)
One stroke movement, synthesis,	techno	Gradation of color adds dimension		Wall texture, element on flooring/ furniture

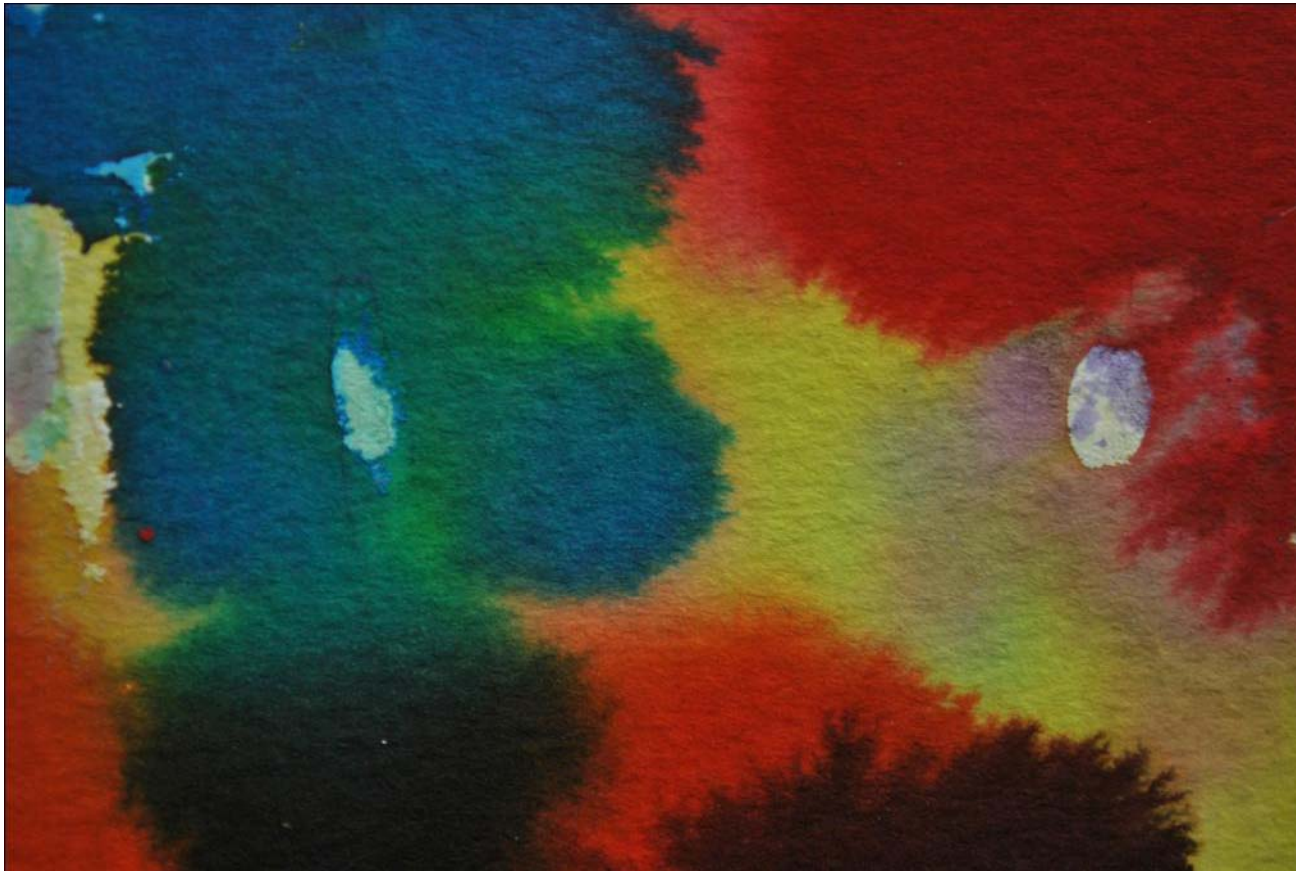




## HUSHED HASHES

- Hashes, crossed, alphabet H and I
- Cool, subtle
- Criss cross lines create visual interest and use of pleasant colours make it suitable for wall décor for living room having lot of light, portico wall etc.
- Base substrate painted, covered with thin layer of pop, scored using finger tip/ pencil end to create criss cross pattern.

Aesthetic impact (Composition and balance)	Emotional impact(theme elicitation)	Visual effect (color dynamics)	Creativity (use of imagination)	Application (interior, exterior spaces)
Criss cross wall texture, square	cubism	Balanced color		walls

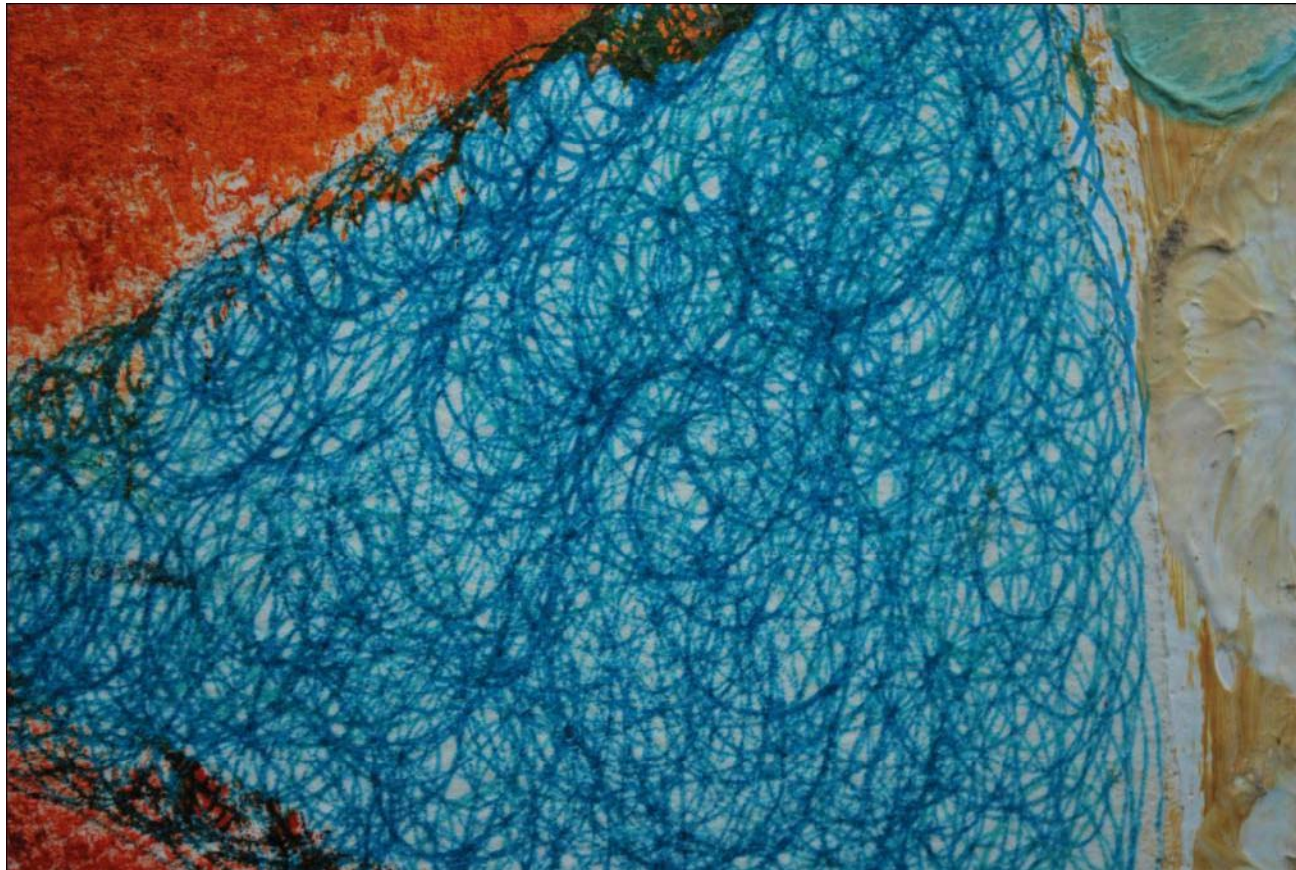


## KALEIDOSCOPE

- Petrol on water forming rainbow colour pattern, ink smudging and blending on blotting paper, kaleidayscope pattern, bandhini fabric
- The white markings in between (is it part of composition?) distorts the balance. It doesn't seem to be a deliberate addition
- Looks ordinary and simple – doesn't give an idea of any new technique
- Fabric design, sari pattern, gift wrapping etc.
- Ink smudged with water in brush, into each other to create a blotting paper spread.

Aesthetic impact (Composition and balance)	Emotional impact(theme elicitation)	Visual effect (color dynamics)	Creativity (use of imagination)	Application (interior, exterior spaces)
Dynamic composition, VIBGYOR. The balance is maintained by leaving white spaces.	soft and gentle, colours blend with each other to bring out new shades and offers a sense of curiosity, Vibrant, submerging, warm, lively, celebration	water colours, Fresh dab of colours on the surface highlights the vibrancy in the picture, zooming to some areas		



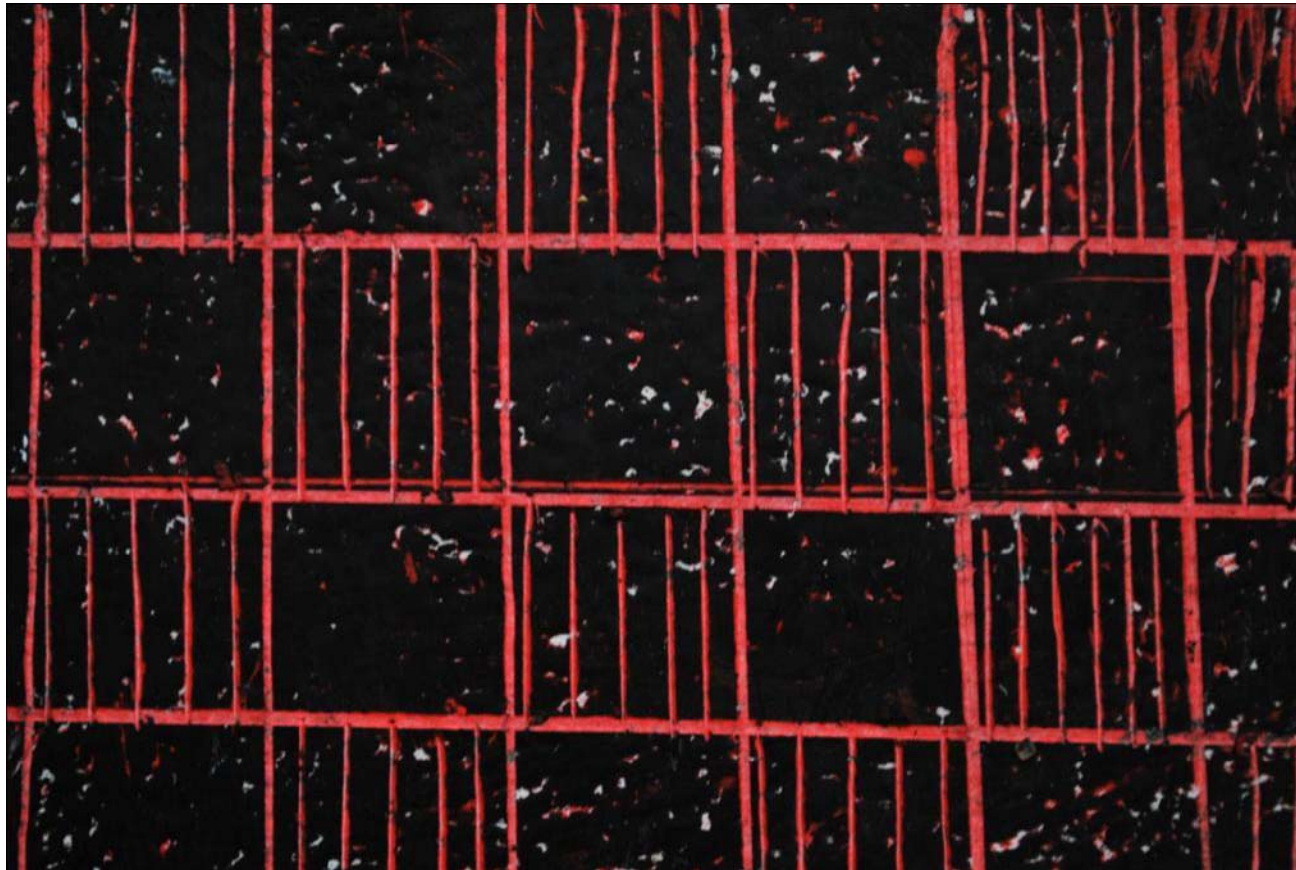


## VIBRANT SCRIBBLE

- Random, dense, congested, bounded territories, scribble
- Contrasting colours and varied styles of rendering create visual interest but the motivation behind the composition is not clear.
- Garage wall, Some colour studio wall décor, graffiti corner, youthful products like covers of notebooks, bags etc.
- Scribble using thin nibbed pen (blue). The Red complements the composition but unable to identify any pattern to it.

Aesthetic impact (Composition and balance)	Emotional impact(theme elicitation)	Visual effect (color dynamics)	Creativity (use of imagination)	Application (interior, exterior spaces)
red and blue contributes to the theme Movement is diagonal	Scribbling, abstract, mixture, messy, confused	Pen scribble, doodled	non	Can be a method of light and shade in still life



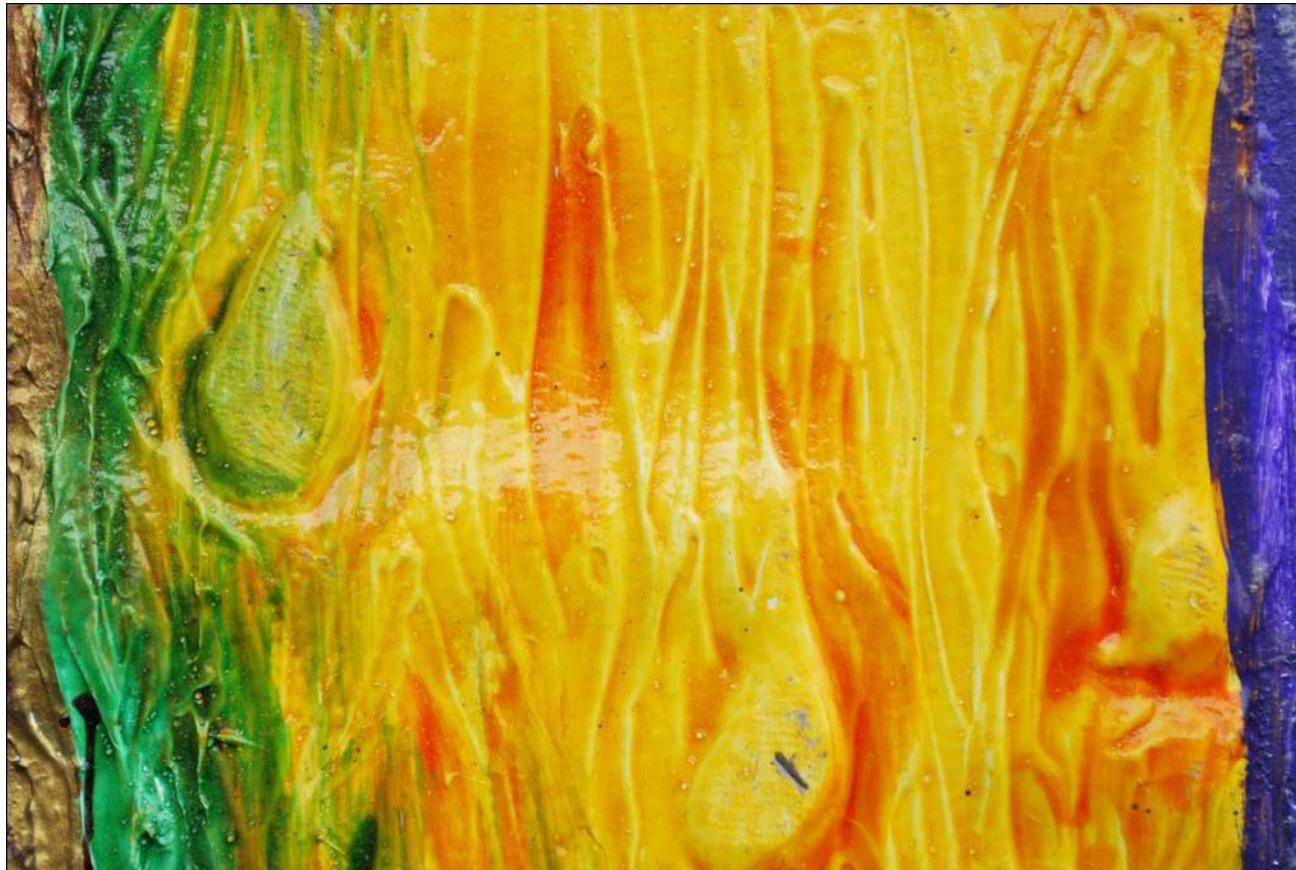


## WINDOW OF HOPE

- Intriguing, arresting, window, starry night, serious, break to freedom, prison, perspective
- The bars and boxes create the feel of a window through which an expanse of the sky is visible. The window though seem to restrict the view of the night sky, still seem intriguing as though pushing someone to break free into the expanse.
- The colours red and black create a bold contrast, yet are not disturbing
- Can go as a painting with a theme / conveying a strong message in a suitable context.

Aesthetic impact (Composition and balance)	Emotional impact(theme elicitation)	Visual effect (color dynamics)	Creativity (use of imagination)	Application (interior, exterior spaces)
paint and crayons. Harmony is maintained through lines, vertical crude lines adds to the theme	The composition expresses darkness and pain. Visually communicates a prison. to break through the barrier, imprisoned	jail	enthusiasm in the viewer	Door mat





## FLAMES OF PASSION

- Vibrant, cheerful, turmeric, glossy, attractive, bright, vivid, shiny, flames, passionate
- Youthful texture a cheerful composition. The contrasting colours merging into one another creates a composite feel.
- Can go as paint shop interiors, any ambience that needs to create a sense of vibrancy and excitement
- Thick glossy colours used to create embossed texture, blended with vertical strokes.

Aesthetic impact (Composition and balance)	Emotional impact(theme elicitation)	Visual effect (color dynamics)	Creativity (use of imagination)	Application (interior, exterior spaces)
Bright use of colors brings about a positive energy in the picture, abstract	Flames, attention seeking,, bright	Composition is dynamic and the movement is vertical.	The dash of purple color towards the right side triggers a sense of excitement.	





## AQUA MAZE

- Water, maze, ameoba, sea with glaciers, corel reef
- There is continuity in the composition with the zig zag strokes.
- Bathroom tiles, due to colour used, also can be an interesting pattern for a ceiling.
- Pattern created with the help of pop and then painted on.

Aesthetic impact (Composition and balance)	Emotional impact(theme elicitation)	Visual effect (color dynamics)	Creativity (use of imagination)	Application (interior, exterior spaces)
continuous	monotonous	Image of a brain, Aqua, underwater, coral, hard rough but soft texture, continuous,		





## SCENT OF A WOMAN

- Mild, subtle, pleasant, feminine, subdued, muted, gentle
- The flowers are there but not there. The mild shades are enhanced with the bright orange dots. As though making a statement on femininity, gentle exterior with a strong core.
- Wedding card base, chiffon or jorjet saree pattern with self embroidery, wall décor of a showroom specializing in women apparel

Aesthetic impact (Composition and balance)	Emotional impact(theme elicitation)	Visual effect (color dynamics)	Creativity (use of imagination)	Application (interior, exterior spaces)
Faint flower bed	Pleasant, childish, subtle	daisy	Use of organic material	Bed sheet, wall texture children's room



## CAGED AMBER

- Hard, rigid, boxed, masculine, strong, serious, dark, bricks, deep
- The rough pattern like a brick creates a structured feel, the blacks enhance the seriousness further
- The golden brown / copper colour scheme in the center has a certain depth.
- Wall décor for a serious space such a study or private library

Aesthetic impact (Composition and balance)	Emotional impact(theme elicitation)	Visual effect (color dynamics)	Creativity (use of imagination)	Application (interior, exterior spaces)
Closed, bold		Amber, copper, underground		Exterior of a house, fire place





## CHOCO DESERT

- Dusty, windy, random, frail, unplanned, desert, dry
- Looks like cocoa powder is randomly sprinkled on a white base (doesn't feel like a composite texture)
- Design element for menu cards of a chocolate café, coffee bar etc...
- 

Aesthetic impact (Composition and balance)	Emotional impact(theme elicitation)	Visual effect (color dynamics)	Creativity (use of imagination)	Application (interior, exterior spaces)





## RAINBOW HUES

- Fragrant, garden, rainbow, pleasant, light, cheerful, rough, childlike, holi colours, faded, bandhini
- Well blended colours, use of white in between creates a faded composition but yet looks pleasant
- Childrens room wall décor, wall of a showroom selling exquisite bandhini work (Bandhej) etc.
- Textured pattern created on substrate and then painted with different hues, merged intelligently

Aesthetic impact (Composition and balance)	Emotional impact(theme elicitation)	Visual effect (color dynamics)	Creativity (use of imagination)	Application (interior, exterior spaces)
Each color has its own space	Festive feel	Splashes of color, vibrant, rainbow	Leaf like texture	Theme restaurant, holi





## METAMORPHOSIS

- Well composed, refined strokes, from dark to light, good gradation
- Has the touch of a seasoned artist, planned strokes.
- Starts from darkness and moves to lighter natural shades, making a statement of transition or metamorphosis of some sort
- Can be a theme painting in some appropriate place signifying the above
- Knife used to create the texture...on an already composed base

Aesthetic impact (Composition and balance)	Emotional impact(theme elicitation)	Visual effect (color dynamics)	Creativity (use of imagination)	Application (interior, exterior spaces)
Abstraction at a level, has some faint imagery to give it a sense of depth	Blood in sea	Pool of gold fish, Chinese influences	use of knife painting technique to create texture	Wall murals



## **2. INSTRUCTIONAL VALUE**

**that can be taken from the Colour and Texture samples**







# **INSTRUCTIONAL VALUE**

**that can be taken from the Colour and Texture samples**

## **1. APPRECIATION OF EXPERIENTIAL VALUE OF COLOUR AND TEXTURE**

- **Help students appreciate and gain deeper insight into the experiential value of colours.**
- **Enable students to go beyond the mere compositions and unearth the intangible / experiential value it holds.**

**Such as**

- **FEEL THAT COLOURS AND TEXTURES GENERATE**
- **SYMBOLIC and CULTURAL VALUE REPRESENTED BY COLOURS**
- **EMOTIONAL IMPACT OF COLOURS IN AN AMBIENCE**

**And so on...**





# **INSTRUCTIONAL VALUE**

**that can be taken from the Colour and Texture samples**

## **2. DEVELOP AN AESTHETIC AND DESIGN SENSITIVITY & SENSIBILITY**

- **Ability to appreciate the aesthetic value of colours and visualise its application and utility for varied requirements.**
- **Appreciate how use of the appropriate colour or texture can enhance the aesthetic utility of a space / product or service.**

**Such as**

- **GRAPHIC DESIGN / Interface design**
- **SPACE DESIGN / Exhibition design**
- **PRODUCT DESIGN**
- **SERVICE DESIGN**

**and so on.**







# INSTRUCTIONAL VALUE

that can be taken from the Colour and Texture samples

## 3. DEVELOP A RICHER VOCABULARY OF VISUAL EXPRESSION

- Help students of design develop a **RICHER VOCABULARY** of a language to convey **FEELINGS and EMOTIONS**
- Make them more **ARTICULATE** in visualizing intangibles (especially when communicating with a multi disciplinary team)
- Develop better **OBSERVATION SKILLS** and become more **SENSITIVE** to the environment.





# **3. EXPERIENTIAL ACTIVITIES**

**developed using the Colour and Texture samples**







# EXPERIENTIAL ACTIVITIES

that can be taken from the Colour and Texture samples

**Activity 01.** CHOOSE A TITLE

**Activity 02.** EXPRESS WHAT YOU FEEL

**Activity 03.** MATCH YOUR MIND

**Activity 04.** FIND THE OPPOSITES

**Activity 05.** WRITE YOUR OWN STORY

**Activity 06.** DESIGN YOUR OWN SPACE





# 01 – CHOOSE A TITLE

## What are the objectives?

### Basic level

- To develop creative thinking
- To improve visual vocabulary

### Advanced level

- To elicit the experiential value generated by a composition.
- To give language to abstraction.
- To see the quality and depth of connect one is able to bring to a visual composition.







## 01 – CHOOSE A TITLE

### Instruction given to students

- Choose a title for the composition






## 01 – CHOOSE A TITLE

### What is the Methodology?

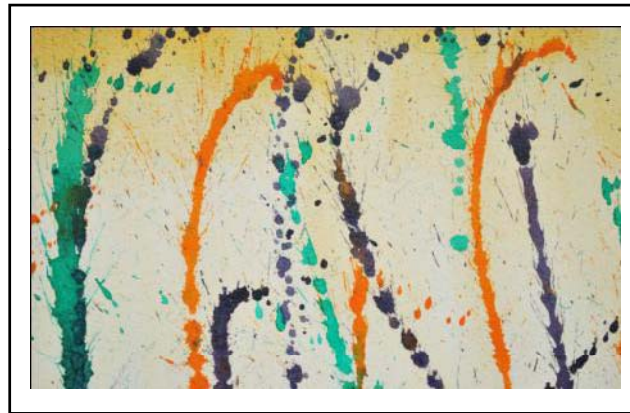
#### 01

- Students are given randomly generated compositions from the database.
  - They are provided space to enter their observations.
  - Their title would appear next to the composition as a framed picture (becoming part of their work for future reference)
  - The students can be made to repeat the activity at the start of the course and towards the end of the course, for them to see the shift in the quality of their expression.
- 



# 01 – CHOOSE A TITLE

An example...



Title given by the student at the start of the session: **“INK SPLATTER”**

Title given by the student towards the end of session: **“COLOURS OF FREEDOM”**



## 01 – CHOOSE A TITLE

What is the Methodology?

02

- A few samples are selected and three appropriate titles are given to it.
- All the three titles are suitable to the composition, but they are at various levels of abstraction and depth. Eg. A) is OBVIOUS, B) is EXPERIENTIAL and C) is ABSTRACT
- Depending on what the student chooses, the depth of connect can be assessed to some extent.







## 01 – CHOOSE A TITLE

An example...



- A) Brown boxes
- B) Fireplace
- C) Caged Amber





## 02 – EXPRESS WHAT YOU FEEL

### What are the objectives?

#### Basic level

- To improve visual vocabulary
- Ability to articulate feelings and emotions

#### Advanced level

- Enhance ones sensitivity to any visual input, in nature, in expressions, in ambience etc.
- Ability to convey thoughts to a multidisciplinary team so as to have minimum gap between what is visualized and what is executed.
- Ability to appreciate subjectivity







## 02 – EXPRESS WHAT YOU FEEL

### Instruction given to students

- What is the feeling the composition elicits within you.
- Express it using three descriptive words.





## 02 – EXPRESS WHAT YOU FEEL

### What is the Methodology?

#### 01

- Students are given randomly generated compositions from the database.
- They are provided space to enter their observations.
- Their words would appear next to the composition (becoming part of their work for future reference)
- The students can have an option to see the words used by fellow students, to decipher new perspectives to the same composition.







## 02 – EXPRESS WHAT YOU FEEL

### What is the Methodology?

#### 02

- A set of keywords (emotions and feeling based) are provided as a list.
- On seeing the composition, students can pick three words from the extensive listing.
- After they make the choice, they can also be given an idea on how many others have chosen similar words (as a percentage).





## 03 – MATCH YOUR MIND

### What are the objectives?

#### Basic level

- To enhance design sensitivity
- To improve visual vocabulary

#### Advanced level

- To improve ones ability to visualize at the application level for multiple ambience / spaces / needs.







## 03 – MATCH YOUR MIND

### Instruction given to students

- Match the compositions on the left to suitable titles on the left.





## 03 – MATCH YOUR MIND

### What is the Methodology?

- A set of compositions are selected.
- A set of titles (shortlisted from the observations averaged from multiple observations collected at the research stage) are provided on the right
- The students have to choose the titles from the list on the right, as appropriate to the composition on the left.

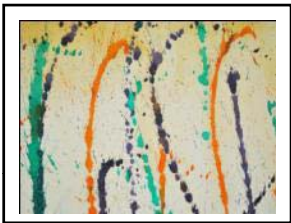






# 03 – MATCH YOUR MIND

An example...



Colours of Freedom



**Colours of Freedom**  
Rainbow Hues  
Caged Amber  
Flight of Passion  
Desert Dunes  
Poetry of Love





## 04 – FIND THE OPPOSITES

**What are the objectives?**

**Basic level**

- To develop Colour sensitivity and emotional impact

**Advanced level**

- Understanding the feel element for better application for various needs.







## 04 – FIND THE OPPOSITES

### Instruction given to students

- Pair compositions that elicit opposite feelings
- Give descriptive words for your choice





## 04 – FIND THE OPPOSITES

### What is the Methodology?

- A set of compositions are selected that elicit opposite feelings.  
Eg. Masculine X Feminine, Soft X Hard, Hatred X Love etc...
- Students are made to pair the opposite ones





## 04 – FIND THE OPPOSITES

An example...



Masculine



Feminine



Hatred



Love







## 05 – WRITE YOUR OWN STORY

**What are the objectives?**

### **Basic level**

- Ability to articulate thoughts
- Creative writing / Theme based writing
- Improving imagination and creative thinking

### **Advanced level**

- Identify and discover the self, by articulating ones inner most thoughts.





## 05 – WRITE YOUR OWN STORY

### Instruction given to students

**Imagine this composition is representing a story visually. What would it be?  
Write a few lines as the abstract of the story it would be representing.**

**Or**

**From the following compositions, pick the one that represents YOU the closest,  
and describe your choice in a few lines.**





## 05 – WRITE YOUR OWN STORY

### What is the Methodology?

- A set of compositions are selected that are vibrant and suggestive of certain attributes of human nature... (shortlisted from observations collected during research stage)
- A choice is given for students to choose and create their own theme based stories.







## 06 – DESIGN YOUR OWN SPACE

What are the objectives?

### Advanced level

- Develop an application orientation
- Develop Visualization capability for specific design requirements such as for graphic design, space design, product design etc.





## 06 – DESIGN YOUR OWN SPACE

### Instructions given to students

- If you were to design the following, what would be compositions you would choose.
- Give a descriptive word for your choice.





## 06 – DESIGN YOUR OWN SPACE

### What is the methodology?

- A set of requirements are given to the students which need design intervention.

Eg.

- CHILDRENS PLAY ROOM
- SALON AND SPA
- CORPORATE LOUNGE
- MEDITATION HALL
- WEDDING CARD and so on

- A choice of compositions are provided, that may suit the requirements. Keeping them as the base, students have to make a choice.
- 