

Design Resource

Nirmal Painting

Traditional Art Form of Oil Paintings

by

Prof. Bibhudutta Baral

NID Campus, Bengaluru

Source:

<http://www.dsource.in/resource/nirmal-painting>



1. Introduction
2. Tools and Raw Materials
3. Frame Preparation
4. Painting Process
5. Products and Themes
6. Contact Details

Design Resource

Nirmal Painting

Traditional Art Form of Oil Paintings
by

Prof. Bibhudutta Baral
NID Campus, Bengaluru

Source:

<http://www.dsource.in/resource/nirmal-painting/introduction>

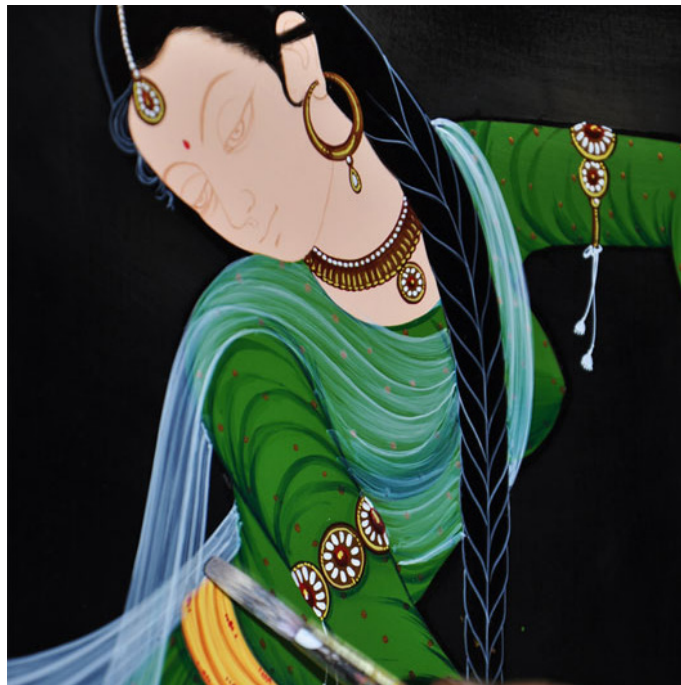
Introduction

Nirmal, a tribal town in **Adilabad** is a world famous center for oil paintings. Nirmal Painting is a traditional art form, which is named after Nirmal town where it is originated. The origin of the Nirmal craft can be traced back to the 'Kakatiya' dynasty. This form of lacquered woodwork has remained a fascination through the ages and is today made in both places-**Hyderabad** and Nirmal. The motifs used are floral designs, frescoes from Ajanta and Ellora and Mughal miniatures.

Nirmal painting was started 400 years back in Nirmal where artisan painted these beautiful painting on wood furniture and fort walls. Later, this craft is patronized by Nizam of Hyderabad. King brought few artisans from Nirmal and established the craft in Hyderabad.

The Nakkash are a community of painters residing in Andhra town of Nirmal. For centuries, artists have been making colorful Nirmal paintings on canvas. The themes of the Nirmal paintings are derived from the Indian epics, mythology and nature. The influence of Mughal miniature paintings is found in the Nirmal Paintings.

1. **Introduction**
2. Tools and Raw Materials
3. Frame Preperation
4. Painting Process
5. Products and Themes
6. Contact Details



Excellent composition of beauty and colorfulness can be seen Nirmal painting.



Women engaged in frame polishing process.

Design Resource

Nirmal Painting

Traditional Art Form of Oil Paintings

by

Prof. Bibhudutta Baral

NID Campus, Bengaluru

Source:

<http://www.dsource.in/resource/nirmal-painting/introduction>

1. Introduction

2. Tools and Raw Materials

3. Frame Preperation

4. Painting Process

5. Products and Themes

6. Contact Details



Frame is being coated before painting process.



Men artisan involves in frame making and painting process.



Artisan with his finished product.

Design Resource

Nirmal Painting

Traditional Art Form of Oil Paintings

by

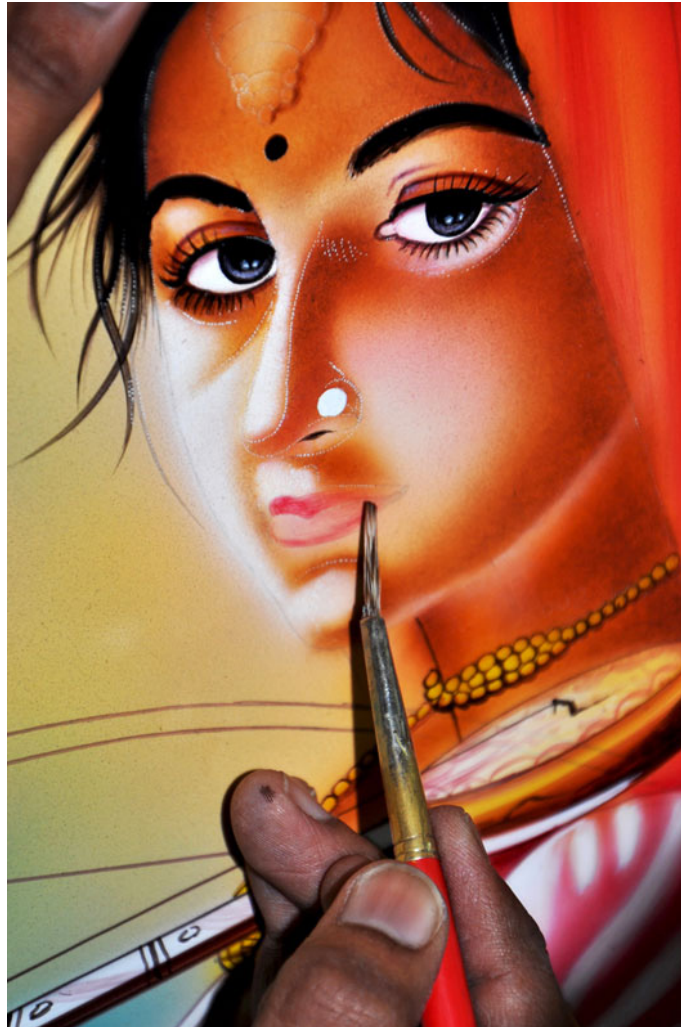
Prof. Bibhudutta Baral

NID Campus, Bengaluru

Source:

<http://www.dsource.in/resource/nirmal-painting/introduction>

1. **Introduction**
2. Tools and Raw Materials
3. Frame Preperation
4. Painting Process
5. Products and Themes
6. Contact Details



Elaborated facial detailing is depicted with great passion.



Glass bottle on which traditional designs are drawn.

Design Resource

Nirmal Painting

Traditional Art Form of Oil Paintings

by

Prof. Bibhudutta Baral

NID Campus, Bengaluru

Source:

<http://www.dsource.in/resource/nirmal-painting/introduction>

1. **Introduction**
2. Tools and Raw Materials
3. Frame Preperation
4. Painting Process
5. Products and Themes
6. Contact Details



Painting is also done on shields based on customer orders.

Design Resource

Nirmal Painting

Traditional Art Form of Oil Paintings

by

Prof. Bibhudutta Baral

NID Campus, Bengaluru

Source:

<http://www.dsource.in/resource/nirmal-painting/tools-and-raw-materials>

Tools and Raw Materials

Tools and Raw Materials used are as below:

- **Teak Wood:** Teak wood is mainly used to prepare frame of the product.
- **Oil Paints:** Oil paints are used to paint as per the requirement.
- **Paint Brushes:** Different sizes of paint brushes are used.
- **Spray Paints:** Once the painting is completed, spray paints are used as it works as waterproof and also get shine.
- **Varnish Spray:** Varnish is coated on the wood to obtain glossy effect.
- **Luppa Paint:** Luppa paint is coated on the wood sheet so that it avoids color absorption when the actual oil paints are painted on the wood surface.
- **Enamel Paints:** Traditionally, the artisans were using natural paints obtained by herbs and stones. Later, due to change in time, the artisans introduced enamel paints in the painting process.
- **Wood Sheets:** Different sizes of wood sheets are used as a base plank.
- **Drilling Machine:** Automated drilling machine is used to drill the holes.
- **Cutting Machine:** Wood cutting machine helps to cut the big blocks into small pieces.



Blocks of teak wood are used to make frames.

Design Resource

Nirmal Painting

Traditional Art Form of Oil Paintings

by

Prof. Bibhudutta Baral

NID Campus, Bengaluru

Source:

<http://www.dsource.in/resource/nirmal-painting/tools-and-raw-materials>

1. Introduction
2. **Tools and Raw Materials**
3. Frame Preperation
4. Painting Process
5. Products and Themes
6. Contact Details



Riffler used to smoothen the curved surface.

Design Resource

Nirmal Painting

Traditional Art Form of Oil Paintings

by

Prof. Bibhudutta Baral

NID Campus, Bengaluru

Source:

<http://www.dsource.in/resource/nirmal-painting/tools-and-raw-materials>

1. Introduction
2. **Tools and Raw Materials**
3. Frame Preperation
4. Painting Process
5. Products and Themes
6. Contact Details



Baseboard is cut as per required size.



Automated drilling machine.

Design Resource

Nirmal Painting

Traditional Art Form of Oil Paintings

by

Prof. Bibhudutta Baral

NID Campus, Bengaluru

Source:

<http://www.dsource.in/resource/nirmal-painting/tools-and-raw-materials>

1. Introduction
2. **Tools and Raw Materials**
3. Frame Preperation
4. Painting Process
5. Products and Themes
6. Contact Details



Wooden sheets stacked at artisans place.

Design Resource

Nirmal Painting

Traditional Art Form of Oil Paintings

by

Prof. Bibhudutta Baral

NID Campus, Bengaluru

Source:

<http://www.dsource.in/resource/nirmal-painting/tools-and-raw-materials>

1. Introduction

2. **Tools and Raw Materials**

3. Frame Preperation

4. Painting Process

5. Products and Themes

6. Contact Details



Artisan coating luppa paint on the wood board.



Sand paper is used to obtain smooth texture.



Spray paint is being coated on wood surface.



A sharp pointed tool is used to make small holes on traced design.

Design Resource

Nirmal Painting

Traditional Art Form of Oil Paintings

by

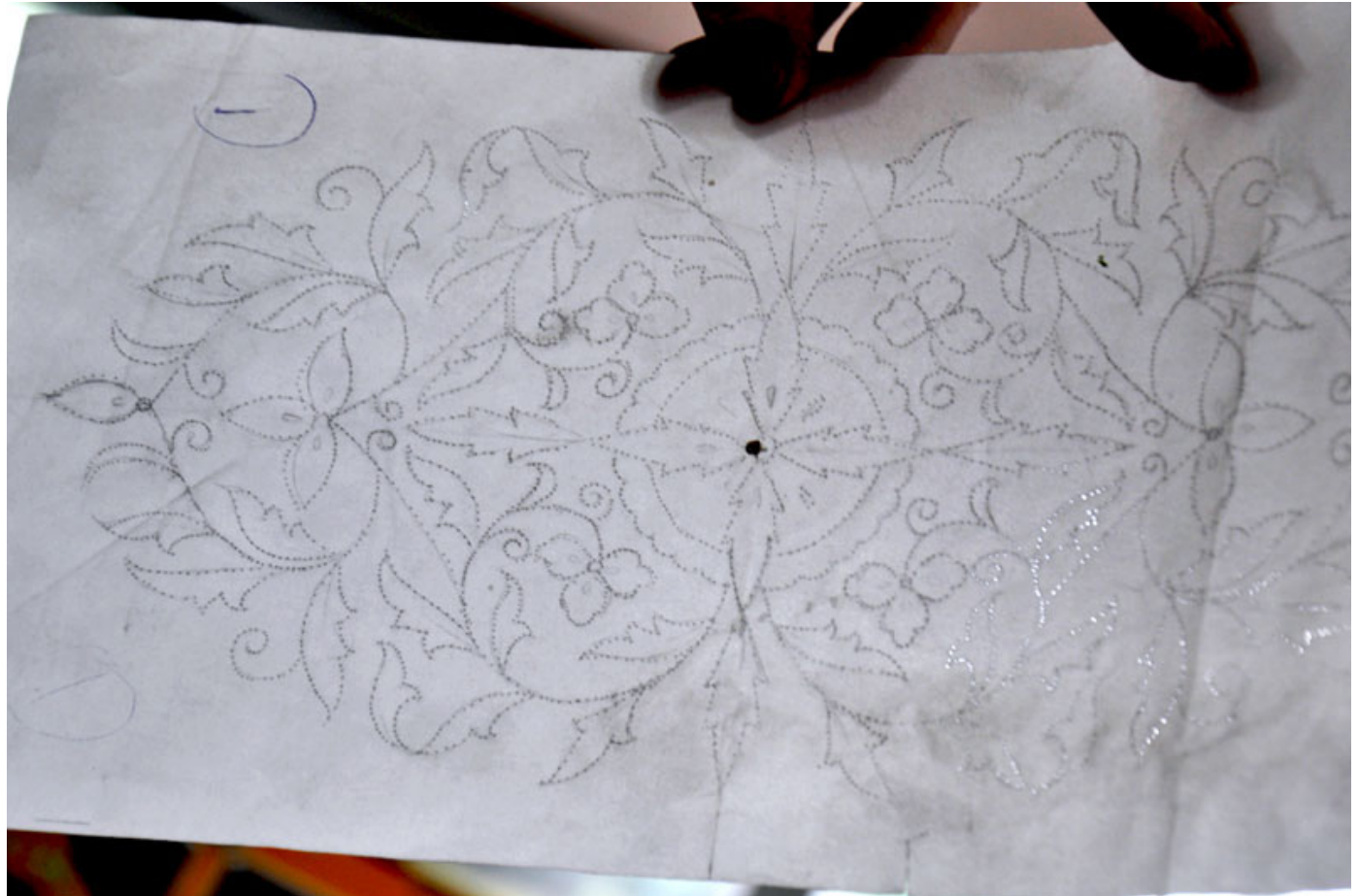
Prof. Bibhudutta Baral

NID Campus, Bengaluru

Source:

<http://www.dsource.in/resource/nirmal-painting/tools-and-raw-materials>

1. Introduction
2. **Tools and Raw Materials**
3. Frame Preperation
4. Painting Process
5. Products and Themes
6. Contact Details



Traced design paper is used to trace the design on the wooden surface.

Design Resource

Nirmal Painting

Traditional Art Form of Oil Paintings

by

Prof. Bibhudutta Baral

NID Campus, Bengaluru

Source:

<http://www.dsource.in/resource/nirmal-painting/frame-preperation>

Frame Preperation

Frame Making Process:

Before Painting, the artisan prepares frame of different sizes as per the estimated size of final paint to be painted.

Plank Preparation:

Luppa Paint (NC patti) is coated on the rectangular shaped wood board around 5 to 6 times. This paint absorbs the moisture from the wood and helps the wood to last for long. After applying luppa paint black paint is sprayed for the background.

Frame Preparation:

First the wood is cut into required size and a rectangular frame is made. The frame is smoothened using sand paper. The frame also coated with several coats of luppa paint.

Finally, the prepared wooden plank is joined to the frame. The board sizes are 8/11, 17/11 and 24/16.



Rectangular wooden frame made of teak wood.

1. Introduction
2. Tools and Raw Materials
3. **Frame Preperation**
4. Painting Process
5. Products and Themes
6. Contact Details

Design Resource

Nirmal Painting

Traditional Art Form of Oil Paintings

by

Prof. Bibhudutta Baral

NID Campus, Bengaluru

Source:

<http://www.dsource.in/resource/nirmal-painting/frame-preparation>

1. Introduction
2. Tools and Raw Materials
3. **Frame Preparation**
4. Painting Process
5. Products and Themes
6. Contact Details



The frame is smoothened before painting to obtain smooth surface.



Frames of different sizes.



Frame is kept ready for coating/painting process.

Design Resource

Nirmal Painting

Traditional Art Form of Oil Paintings

by

Prof. Bibhudutta Baral

NID Campus, Bengaluru

Source:

<http://www.dsource.in/resource/nirmal-painting/frame-preparation>

1. Introduction
2. Tools and Raw Materials
3. **Frame Preperation**
4. Painting Process
5. Products and Themes
6. Contact Details



Wooden board is being smoothened by rubbing it with sand paper.



A coat of lappa paint is coated on the surface.



Nearly nine to ten coats are coated on the plank.



Artisans engaged in frame making process.

Design Resource

Nirmal Painting

Traditional Art Form of Oil Paintings

by

Prof. Bibhudutta Baral

NID Campus, Bengaluru

Source:

<http://www.dsource.in/resource/nirmal-painting/frame-preparation>

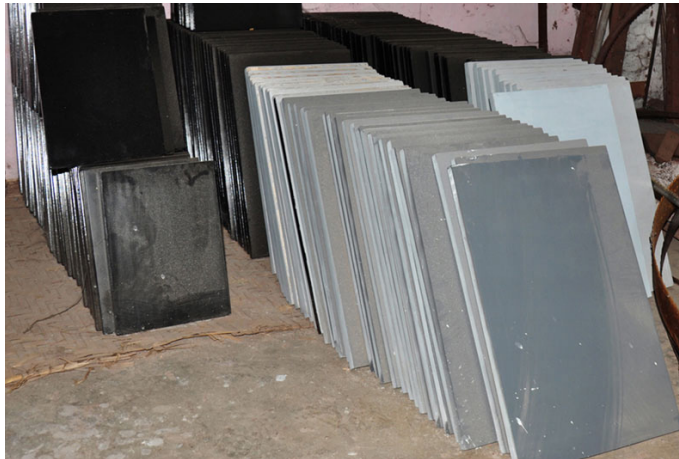
1. Introduction
2. Tools and Raw Materials
3. **Frame Preparation**
4. Painting Process
5. Products and Themes
6. Contact Details



After coating, the surface is smoothened.



The plank is fixed to the rectangular frame and kept ready for painting process.



Background color changed as per requirement.



The shape of frame varies as per the product to be made.

Design Resource

Nirmal Painting

Traditional Art Form of Oil Paintings
by

Prof. Bibhudutta Baral
NID Campus, Bengaluru

Source:

<http://www.dsource.in/resource/nirmal-painting/painting-process>

Painting Process

In earlier days, White wood of Tella Poniki tree was used as paint board for painting, which fascinatingly out-stands. Due to change in time, artisans introduced Indian teak wood due to its soft grain texture, strength, and lightweight and lifetime quality. Sometimes wood is changed as per the customer's choice. Before, paints were derived from colorful stones found at the shores of Godavari river and natural ingredients like herbs and mud.

Present day oil paints and spray paints and acrylic colors are mixed with fevicol and used for painting. Traditional designs are traced or drawn in chalk on smoothened wood or composition board, then painted in flat, bright colors and often touched up with gold and varnished. Once the paintings are completed clear spray is sprayed on the frames for water resistance and luster. The paintings are exported to Australia, America and England through Lepakshi, an AP govt. organization.



The design sketch is drawn on thick polythene paper and holes are made using sharp tool.

1. Introduction
2. Tools and Raw Materials
3. Frame Preparation
4. **Painting Process**
5. Products and Themes
6. Contact Details

Design Resource

Nirmal Painting

Traditional Art Form of Oil Paintings

by

Prof. Bibhudutta Baral

NID Campus, Bengaluru

Source:

<http://www.dsource.in/resource/nirmal-painting/painting-process>

1. Introduction
2. Tools and Raw Materials
3. Frame Preperation
4. **Painting Process**
5. Products and Themes
6. Contact Details



The design is traced on the smoothened board.



Detailing is done to create depth in the painting.

Design Resource

Nirmal Painting

Traditional Art Form of Oil Paintings

by

Prof. Bibhudutta Baral

NID Campus, Bengaluru

Source:

<http://www.dsource.in/resource/nirmal-painting/painting-process>

1. Introduction
2. Tools and Raw Materials
3. Frame Preperation
4. **Painting Process**
5. Products and Themes
6. Contact Details



Once the outline is drawn, the colors are filled.

Design Resource

Nirmal Painting

Traditional Art Form of Oil Paintings

by

Prof. Bibhudutta Baral

NID Campus, Bengaluru

Source:

<http://www.dsource.in/resource/nirmal-painting/painting-process>

1. Introduction
2. Tools and Raw Materials
3. Frame Preperation
4. **Painting Process**
5. Products and Themes
6. Contact Details



Specifying with different colors to portray intricate embellishments.



Skilled artisan engaged in creating artistic masterpiece.



Nirmal artisan paints the image of deities as per demand.

Design Resource

Nirmal Painting

Traditional Art Form of Oil Paintings

by

Prof. Bibhudutta Baral

NID Campus, Bengaluru

Source:

<http://www.dsource.in/resource/nirmal-painting/painting-process>

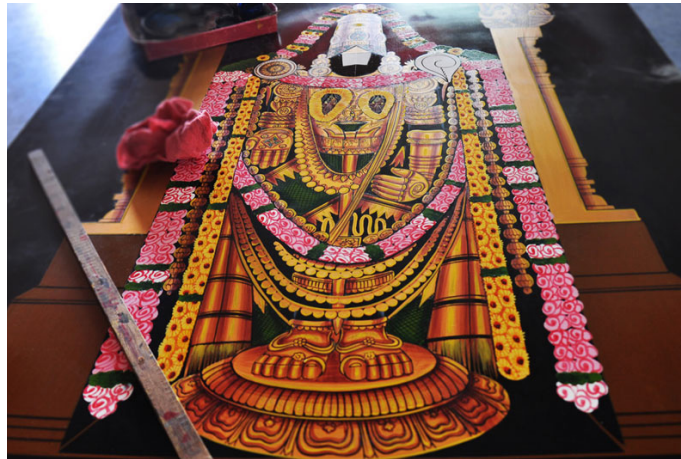
1. Introduction
2. Tools and Raw Materials
3. Frame Preperation
4. **Painting Process**
5. Products and Themes
6. Contact Details



Depth strokes to achieve detailed facial features.



Working environment.



Finished product is kept ready for final finishing.



Spray paint is used to obtain glossy finish.

Design Resource

Nirmal Painting

Traditional Art Form of Oil Paintings

by

Prof. Bibhudutta Baral

NID Campus, Bengaluru

Source:

<http://www.dsource.in/resource/nirmal-painting/painting-process>

1. Introduction
2. Tools and Raw Materials
3. Frame Preperation
4. **Painting Process**
5. Products and Themes
6. Contact Details



Nirmal Painting is done on different wooden surfaces as per requirement.

Design Resource

Nirmal Painting

Traditional Art Form of Oil Paintings

by

Prof. Bibhudutta Baral

NID Campus, Bengaluru

Source:

<http://www.dsource.in/resource/nirmal-painting/products-and-themes>

Products and Themes

The themes are generally from the mythological epics like Ramayan, Mahabharat and Moghual time's themes. Today customers prefer new designs or themes fitting to the current social situations. Artisans follow customer's choice. Apart from mythological themes tribal paintings, human postures are also painted. Few of Nirmal paints are inspired by miniature paintings. Frames, shields and corporate gifts, name plates include in the range of products. Some other painting are done on the door, wall decorators etc.



Scene of royal life depicted in vibrant colors.

1. Introduction
2. Tools and Raw Materials
3. Frame Preperation
4. Painting Process
5. **Products and Themes**
6. Contact Details

Design Resource

Nirmal Painting

Traditional Art Form of Oil Paintings

by

Prof. Bibhudutta Baral

NID Campus, Bengaluru

Source:

<http://www.dsource.in/resource/nirmal-painting/products-and-themes>

1. Introduction
2. Tools and Raw Materials
3. Frame Preperation
4. Painting Process
5. **Products and Themes**
6. Contact Details



Striking replica of a tribal woman.



Beautiful facial expressions with elaborated jewel designs.

Design Resource

Nirmal Painting

Traditional Art Form of Oil Paintings

by

Prof. Bibhudutta Baral

NID Campus, Bengaluru

Source:

<http://www.dsource.in/resource/nirmal-painting/products-and-themes>

1. Introduction
2. Tools and Raw Materials
3. Frame Preperation
4. Painting Process
5. **Products and Themes**
6. Contact Details

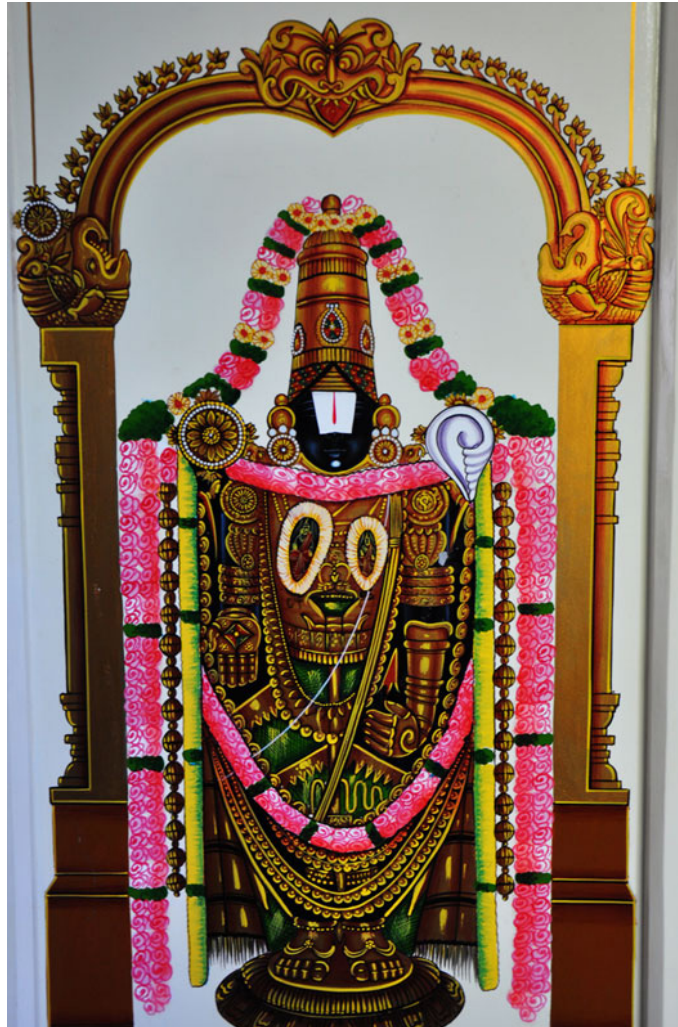


Image of Lord Venkateshwara depicted on frame.



Painting of royal women inspired by miniature paintings.

Design Resource

Nirmal Painting

Traditional Art Form of Oil Paintings

by

Prof. Bibhudutta Baral

NID Campus, Bengaluru

Source:

<http://www.dsource.in/resource/nirmal-painting/products-and-themes>

1. Introduction
2. Tools and Raw Materials
3. Frame Preperation
4. Painting Process
5. **Products and Themes**
6. Contact Details



Lord Ganesha in sitting posture.



Bright colors over dark background are outstanding.

Design Resource

Nirmal Painting

Traditional Art Form of Oil Paintings

by

Prof. Bibhudutta Baral

NID Campus, Bengaluru

Source:

<http://www.dsource.in/resource/nirmal-painting/products-and-themes>

1. Introduction
2. Tools and Raw Materials
3. Frame Preperation
4. Painting Process
5. **Products and Themes**
6. Contact Details



Nirmal painting done on shields and cups.



Lord Ganesha in dancing pose.

Design Resource

Nirmal Painting

Traditional Art Form of Oil Paintings

by

Prof. Bibhudutta Baral

NID Campus, Bengaluru

Source:

<http://www.dsource.in/resource/nirmal-painting/products-and-themes>

1. Introduction
2. Tools and Raw Materials
3. Frame Preperation
4. Painting Process
5. **Products and Themes**
6. Contact Details



Few paintings are influenced by artisan's own imagination.



Gold color is painted to specify ornaments, which is extracted from herbals in earlier days.

Design Resource

Nirmal Painting

Traditional Art Form of Oil Paintings

by

Prof. Bibhudutta Baral

NID Campus, Bengaluru

Source:

<http://www.dsource.in/resource/nirmal-painting/contact-details>

Contact Details

This documentation was done by Prof. Bibhudutta Baral at **NID Campus, Bengaluru**.

You can get in touch with

- Prof. Bibhudutta Baral at [bibhudutta\[at\]nid.edu](mailto:bibhudutta[at]nid.edu)

You could write to the following address regarding suggestions and clarifications:

Helpdesk Details:

Co-ordinator

Project e-kalpa

R & D Campus

National Institute of Design

#12 HMT Link Road, Off Tumkur Road

Bengaluru 560 022

India

Phone: +91 80 2357 9054

Fax: +91 80 23373086

Email: [dsource.in\[at\]gmail.com](mailto:dsource.in[at]gmail.com)

1. Introduction
2. Tools and Raw Materials
3. Frame Preperation
4. Painting Process
5. Products and Themes
6. **Contact Details**