

Design Resource

## Pichhaura - Almora

Traditional Ceremonial Wear

by

Prof. Bibhudutta Baral

NID Campus, Bengaluru

Source:

<http://www.dsource.in/resource/pichhaura-almora>

1. Introduction
2. Location Map
3. Tools and Raw Materials
4. Making Process
5. Products
6. Contact Details



Design Resource

## Pichhaura - Almora

Traditional Ceremonial Wear

by

Prof. Bibhudutta Baral

NID Campus, Bengaluru

### Source:

<http://www.dsource.in/resource/pichhaura-almora/introduction>

## Introduction

**Pichhaura** is a garment worn at ceremonial occasions in Uttarakhand. From bride to great grandmother, every women in the family wear it on auspicious occasions be it namkarna (naming ceremony), marriage, upanayan (a ritual done during wedding). It has a special significance and is mandatory for all married women in the family or close relation.

The traditional Pichhaura is hand printed with traditional motifs with red color over yellow background. Pichhaura is worn by women during the preparations they made for Aipan folk painting.

### The Place:

Almora is a district in the Kumaun division of Uttarakhand in India, which is known for its cultural heritage, handicrafts, cuisine and wildlife.



This traditionally designed shawl is specially made for the bride.

1. Introduction
2. Location Map
3. Tools and Raw Materials
4. Making Process
5. Products
6. Contact Details



Design Resource

## Pichhaura - Almora

Traditional Ceremonial Wear

by

Prof. Bibhudutta Baral

NID Campus, Bengaluru

Source:

<http://www.dsource.in/resource/pichhaura-almora/introduction>

1. Introduction
2. Location Map
3. Tools and Raw Materials
4. Making Process
5. Products
6. Contact Details



This shawl is designed by women artisans by hand.

Design Resource

## Pichhaura - Almora

Traditional Ceremonial Wear

by

Prof. Bibhudutta Baral

NID Campus, Bengaluru

Source:

<http://www.dsource.in/resource/pichhaura-almora/introduction>

1. **Introduction**
2. Location Map
3. Tools and Raw Materials
4. Making Process
5. Products
6. Contact Details



Artisans make the craft in their home premises.

Design Resource

## Pichhaura - Almora

Traditional Ceremonial Wear

by

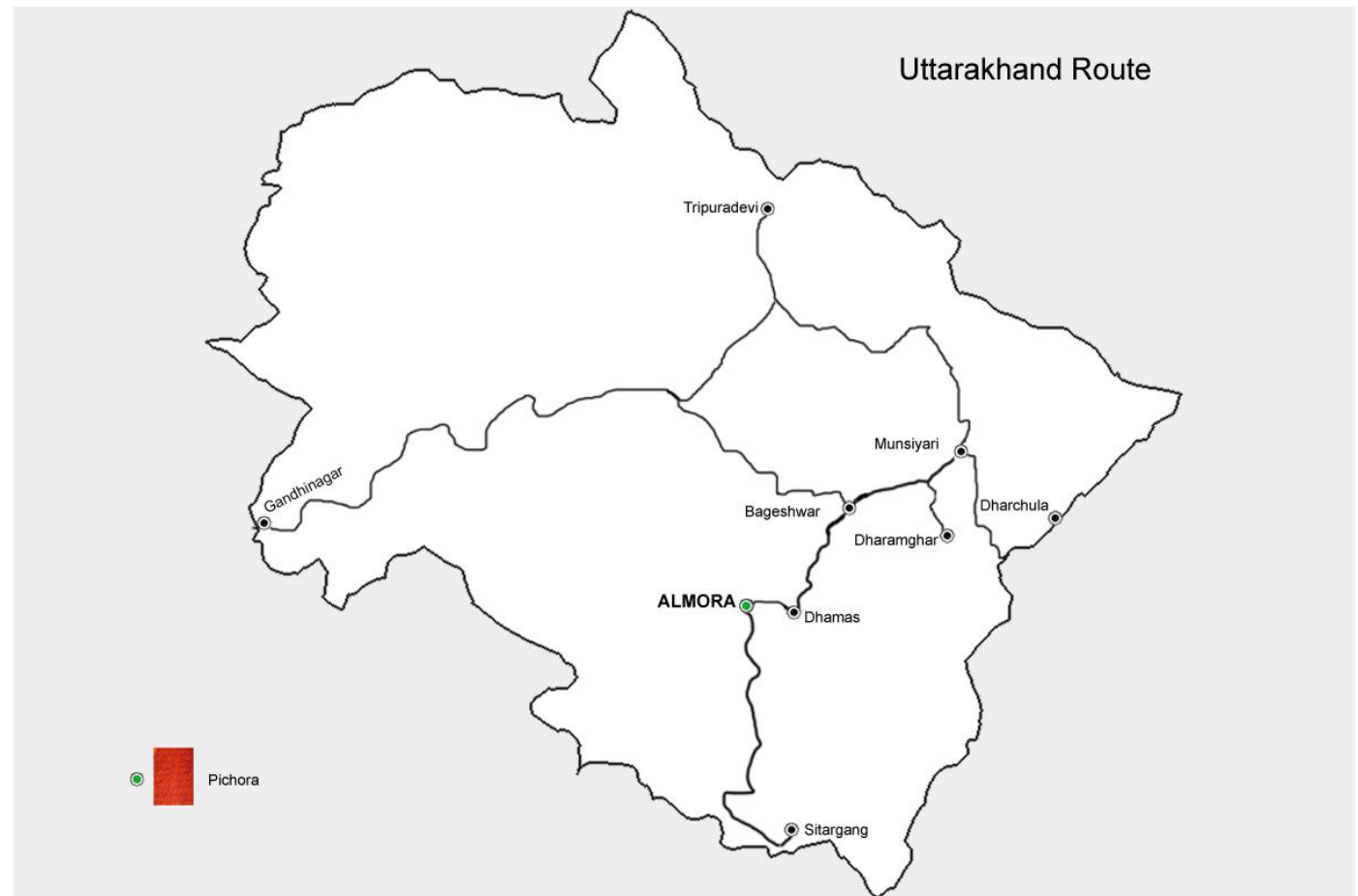
Prof. Bibhudutta Baral

NID Campus, Bengaluru

Source:

<http://www.dsource.in/resource/pichhaura-almora/location-map>

## Location Map



1. Introduction

2. **Location Map**

3. Tools and Raw Materials

4. Making Process

5. Products

6. Contact Details



Design Resource

## Pichhaura - Almora

Traditional Ceremonial Wear

by

Prof. Bibhudutta Baral

NID Campus, Bengaluru

Source:

<http://www.dsource.in/resource/pichhaura-almora/tools-and-raw-materials>

## Tools and Raw Materials

The tools and raw materials used are purchased from local market. The cloth is bought from Delhi. The usage of materials is very less in this craft making process. The craft is made at home premises only. The artisans involved to make this craft are only women.

- Chicken Karahi cloth: Fabric on which the design is made.
- Gram: Chana using which the dots design is made on the cloth.
- Coin: 50 paise coin is used to draw the line patterns on the cloth.
- Color: The color used in dying the cloth is bought from Delhi.



1. Introduction
2. Location Map
3. **Tools and Raw Materials**
4. Making Process
5. Products
6. Contact Details



Design Resource

## Pichhaura - Almora

Traditional Ceremonial Wear

by

Prof. Bibhudutta Baral

NID Campus, Bengaluru

### Source:

<http://www.dsource.in/resource/pichhaura-almora/tools-and-raw-materials>

1. Introduction
2. Location Map
3. **Tools and Raw Materials**
4. Making Process
5. Products
6. Contact Details



The design is made using red color.



Yellow color is used to dye the cloth.



Golden color lace is stitched at the border of the shawl for decoration.

Design Resource

## Pichhaura - Almora

Traditional Ceremonial Wear

by

Prof. Bibhudutta Baral

NID Campus, Bengaluru

### Source:

<http://www.dsource.in/resource/pichhaura-almora/making-process>

1. Introduction
2. Location Map
3. Tools and Raw Materials
4. **Making Process**
5. Products
6. Contact Details

## Making Process

Pichhaura is made on a white color fabric called “Chicken karahi” purchased from Delhi, which is of two fifty meters long. The Pichhaura design is made on different type of clothes as well, which is decided by customer.

Earlier, dye colors were purchased from Delhi but currently colors are available in local market also. Yellow and red are only the two colors used to design the fabric. The red and yellow color together symbolizes enduring conjugal life, health and prosperity.

Yellow color powder is mixed with water. Locally available adhesive is mixed in the solution, so the color sticks to the fabric strongly. The cloth is dipped and soaked in the solution for five minutes. The designs are made while the cloth is still wet, as the color will spread if the cloth is dry.

The design is made using red color solution. 50 paisa coin and gram is tied in a piece of cloth, which is dipped in the red color solution and then design is made on the cloth. Line patterns are made using 50 paisa coins and dot patterns are made using gram (grain type). The design made in the middle of the cloth is called as ‘Surya chandra Codi’. The design consists of Surya (Sun God), Chandra (Moon), Ghanti (bell), and shankh (shell) which is considered auspices. Dotted design is covered on the remaining area of the cloth. After the design is made, the cloth is dried in the sun. Once it is dried, golden or silver color lace locally known as ‘kiran’ is stitched all around in the periphery is stitched.



Yellow color dye solution is prepared to dye the cloth.



Adhesive is mixed in the solution, to make the color stick strongly to the fabric.



Design Resource

## Pichhaura - Almora

Traditional Ceremonial Wear

by

Prof. Bibhudutta Baral

NID Campus, Bengaluru

Source:

<http://www.dsource.in/resource/pichhaura-almora/making-process>

1. Introduction
2. Location Map
3. Tools and Raw Materials
4. **Making Process**
5. Products
6. Contact Details



Artisan immerses the cloth in the dye solution.



The fabric is soaked in the dye solution for five minutes.

Design Resource

## Pichhaura - Almora

Traditional Ceremonial Wear

by

Prof. Bibhudutta Baral

NID Campus, Bengaluru

Source:

<http://www.dsource.in/resource/pichhaura-almora/making-process>

1. Introduction
2. Location Map
3. Tools and Raw Materials
4. **Making Process**
5. Products
6. Contact Details



Artisan strains/remove out the water from the cloth.



Red color solution is made and filtered, which is used to make design on the cloth.



Design Resource

## Pichhaura - Almora

Traditional Ceremonial Wear

by

Prof. Bibhudutta Baral

NID Campus, Bengaluru

### Source:

<http://www.dsource.in/resource/pichhaura-almora/making-process>

1. Introduction
2. Location Map
3. Tools and Raw Materials
4. **Making Process**
5. Products
6. Contact Details



The design is made on the cloth while it is still wet.



Dot design is made using a gram tied in cloth, dipped in the red color.



Line patterns are drawn using 50 paise coin tied in cloth and dipped in the red color.



Surya Chandra codi design is drawn in the center of the shawl.



Design Resource

## Pichhaura - Almora

Traditional Ceremonial Wear

by

Prof. Bibhudutta Baral

NID Campus, Bengaluru

Source:

<http://www.dsource.in/resource/pichhaura-almora/making-process>

1. Introduction
2. Location Map
3. Tools and Raw Materials
4. **Making Process**
5. Products
6. Contact Details



The left remaining area is covered with design of dot patterns.



Once designed the cloth is dried in the sun.



The shawl is decorated by stitching golden lace on the borders.



Design Resource

## Pichhaura - Almora

Traditional Ceremonial Wear

by

Prof. Bibhudutta Baral

NID Campus, Bengaluru

Source:

<http://www.dsource.in/resource/pichhaura-almora/making-process>

1. Introduction
2. Location Map
3. Tools and Raw Materials
4. **Making Process**
5. Products
6. Contact Details





Design Resource

## Pichhaura - Almora

Traditional Ceremonial Wear

by

Prof. Bibhudutta Baral

NID Campus, Bengaluru

Source:

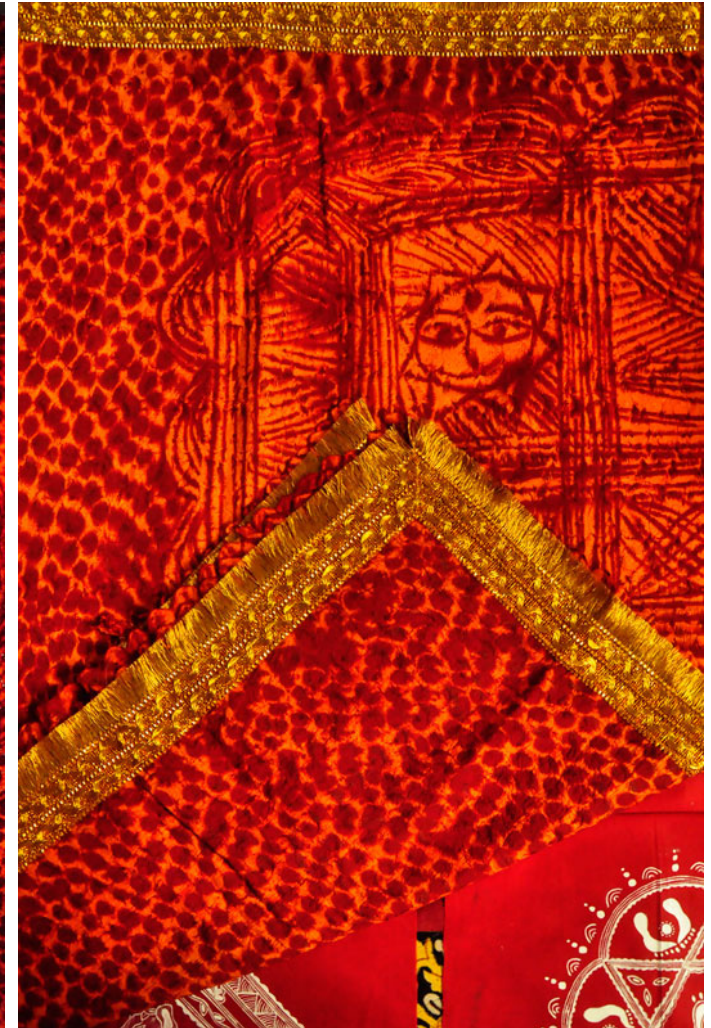
<http://www.dsource.in/resource/pichhaura-almora/products>

## Products

Only traditional shawl is made. This product is worn by women on all auspicious occasions. This shawl is made only by women artisans traditionally at home on Chicken Karahi cloth. With the changing trend this shawl is made by men and sold in shops as well. It is also block printed on fabric material as per demand by customers.



This shawl is worn by women on all auspicious occasions.



This craft is designed by women artisans by hand from traditions.

1. Introduction
2. Location Map
3. Tools and Raw Materials
4. Making Process
5. **Products**
6. Contact Details



Design Resource

## Pichhaura - Almora

Traditional Ceremonial Wear

by

Prof. Bibhudutta Baral

NID Campus, Bengaluru

Source:

<http://www.dsource.in/resource/pichhaura-almora/products>

1. Introduction
2. Location Map
3. Tools and Raw Materials
4. Making Process
5. **Products**
6. Contact Details



Essentially this shawl is designed for the bride to wear on her wedding.

Design Resource

## Pichhaura - Almora

Traditional Ceremonial Wear

by

Prof. Bibhudutta Baral

NID Campus, Bengaluru

### Source:

[http://www.dsource.in/resource/pichhaura-almora/  
contact-details](http://www.dsource.in/resource/pichhaura-almora/contact-details)

## Contact Details

This documentation was done by Prof. Bibhudutta Baral at  
**NID Campus, Bengaluru.**

You can get in touch with

- Prof. Bibhudutta Baral at [bibhudutta\[at\]nid.edu](mailto:bibhudutta[at]nid.edu)

You could write to the following address regarding  
suggestions and clarifications:

### Helpdesk Details:

Co-ordinator

Project e-kalpa

R & D Campus

National Institute of Design

#12 HMT Link Road, Off Tumkur Road

Bengaluru 560 022

India

Phone: +91 80 2357 9054

Fax: +91 80 23373086

Email: [dsource.in\[at\]gmail.com](mailto:dsource.in[at]gmail.com)

1. Introduction
2. Location Map
3. Tools and Raw Materials
4. Making Process
5. Products
6. **Contact Details**