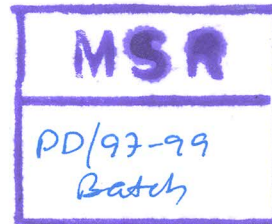


DOCUMENTATION AND ANALYSIS OF **INDIGENOUS AND TRADITIONAL PRODUCTS**

IN DAY TO DAY LIFE

_____ AVINASH BHALERAO



L. D. G. LIBRARY

Industrial Design Centre
Indian Institute of Technology
P. O. I. I. T. Bombay-400 076

INDUSTRIAL DESIGN CENTRE
INDIAN INSTITUTE OF TECHNOLOGY
BOMBAY-400076

ACKNOWLEDGEMENTS

I am grateful to my guide Prof.M.Bhandari for his guidance.

I thank all those who, in spite of limited resources keep developing better things around us.

AVINASH S. BHALERAO

CONTENTS

OBJECTIVES

FROM MANMADE MATERIALS

1. REUSE OF MATERIALS
2. SIMPLIFIED TECHNOLOGY
3. CRAFT AND PLAY

MODERN KITCHEN AID

TRADITIONAL TOUCH

NEW CONCEPTS

USE OF NATURAL MATERIAL



Logical and practical thinking always leads to nicer solutions to the problem. We always try to be independent find our own way to go ahead. We think, we dream something and to convert it in to reality. We built environment around us with the resources available. We try and make best se of limited resources to get maximum output and comfort.

For day to day use we redesign the surrounding by-intelligent improvisation, adoption of processes, substitution of material and use of natural materials. Without taking help of highly developed technology, science etc.

Because for daily work, utility of the product for that time or event or occasion is important. The depth and seriousness of operation /event is important rather than comfort and its aesthetics. Where the function or usability is predominant than the its visual characteristics.

Again scarcity of materials, resources, money... leads to very immediate and simple solutions to the problems.

OBJECTIVE:

The intention is to collect data and samples of such locally developed products. To understand the logic behind such developments. How they tackle such problems and approach followed by them, with known constraints.

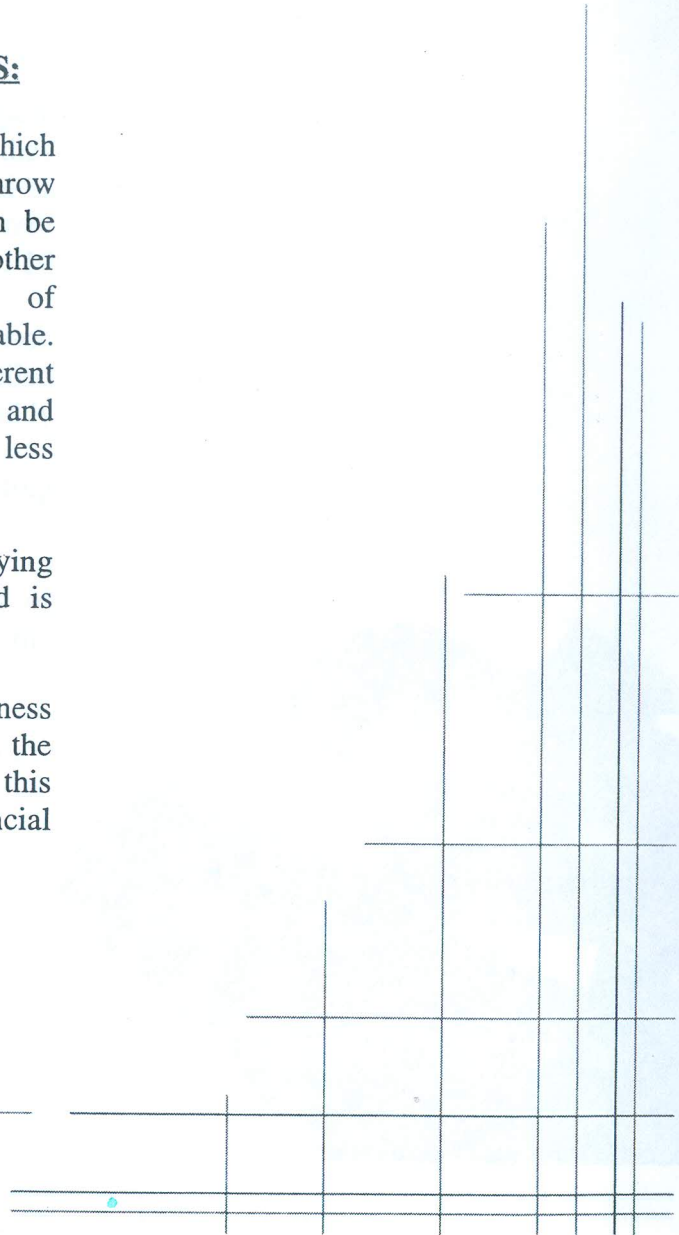


FROM MAN MADE ELEMENTS:

We see lot of things around us, which becomes outdated and we just throw them after use. Such material can be used again which replaces other materials or aids the function of previous one so as to make it usable. For such materials use of inherent properties, their size and color and event post processing which is less expensive can be used very well.

So keeping the identity same, copying another product to cater the need is important.

This product reflects the belongingness for it- its community, culture of the people who are going to use this product or even their status, financial background.

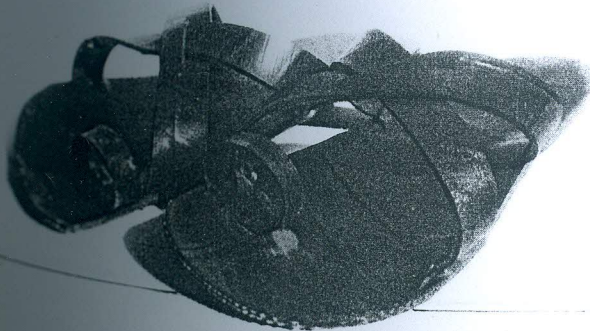


1. REUSE OF MATERIALS

MARUTI CHAPPAL-

Excellent example of use of waste material in other product, in another form.

Replacement for costly leather footwear, best use of tires.



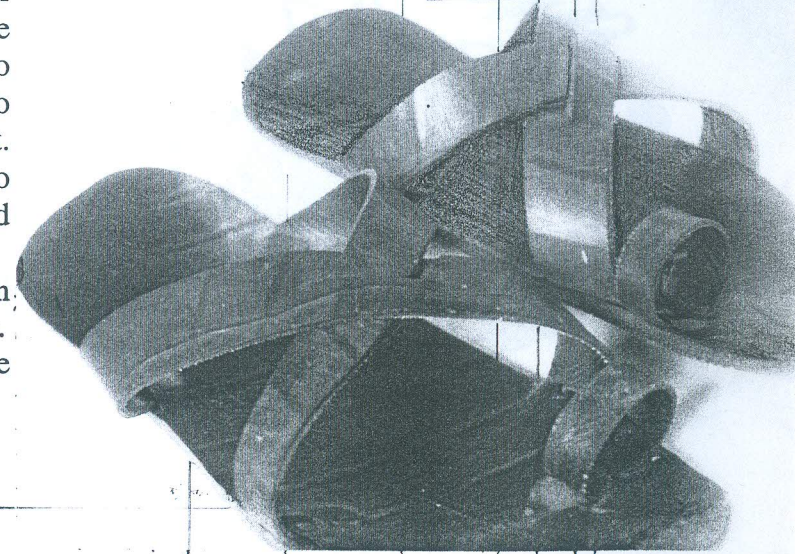
According to villagers of Neri, Jalgaon Maruti car is the best car. And so they have given the name Maruti chappal as it's good for all seasons and very cheaply available. Costing from Rs. 10 to 25

Its basically made to use in rainy season as rest all chappals , shoes get spoiled within no time due to rain and muddy roads.

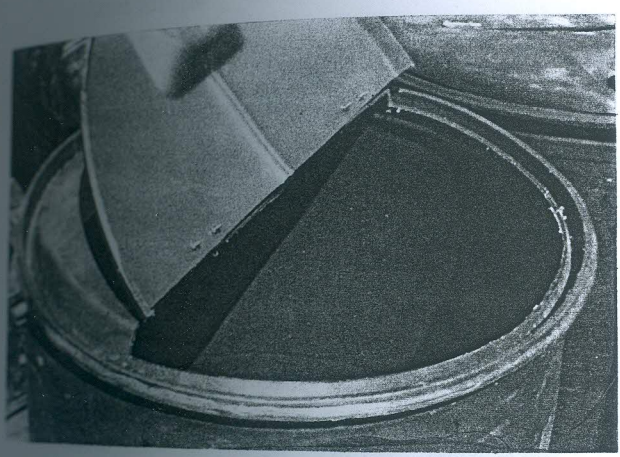
What cobbler need are leather cutting knife, nails and small hammer.

Spoiled tyre layers are separated to cut different sizes of soles and straps of different designs. Through the experience they know how exactly to put straps and toe strap in position. So that it won't cut the foot in contact. Very comfortable and durable also because of rubber -elasticity and reinforced nylon threading inside.

Repairing is very simple, no separation of sole layers, no threading required etc. It is made out of minimum possible materials and efforts.

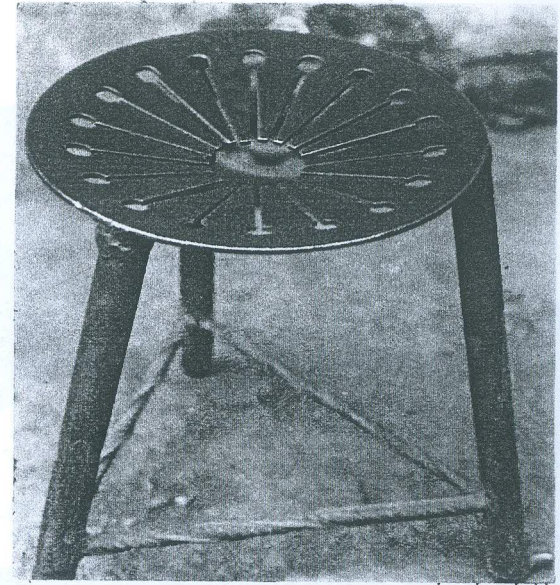


TECHNOLOGY



STOOL:

Best use of automobile components such as clutch plate-spring, stand. Just by welding all these parts. Three legs and three horizontal support for stability. Good use of serration on the plate, it acts as nice visual pattern and at the same time ventilation.

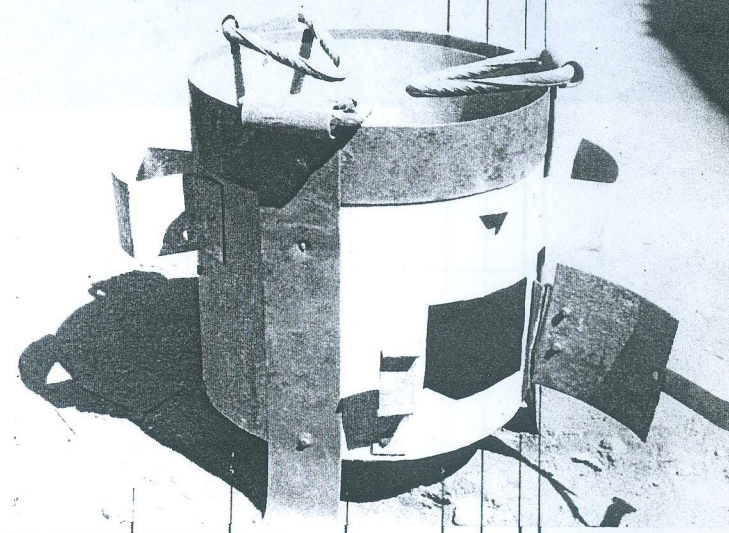


DRUM:

HDPE drums used for storing corrosive chemicals are very cleverly converted in to water storage tanks. Top cover is cut precisely in to two halves and hinged at the centre and it becomes ordinary drum for storage.

SHEGADI:

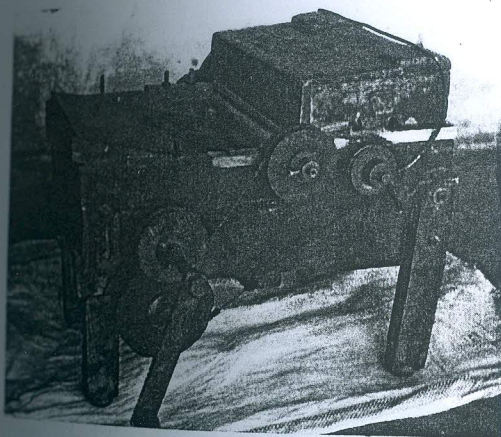
Use of MS bars as a grill inside and tin sheets or MS sheets for rest of the body. Small opening at the base to remove ash and clean it from inside. Rusted plates are used for borders and three legs create demarcation between it giving better appearance.



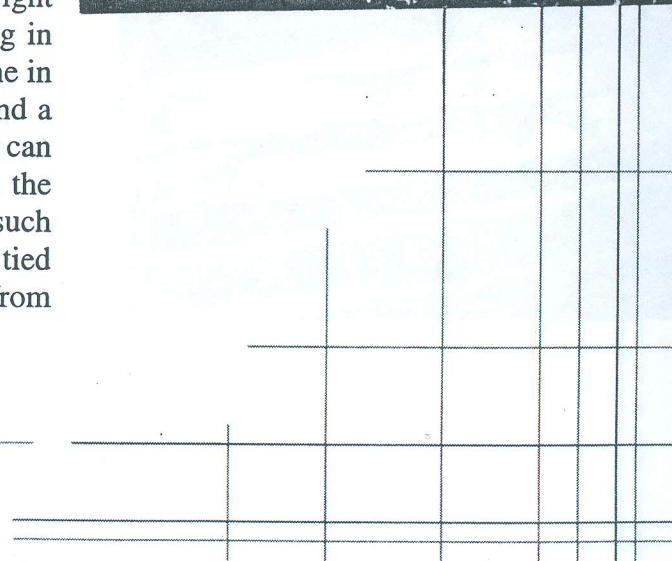
2. SIMPLIFIED TECHNOLOGY

GINNING MACHINE

Machine for separating cotton seeds or cotton lumps



Abdul chacha Pinjari got it from Baroda in 1976 for Rs. 300 . Which by now is around 1200 Rs. He is proud that he has got a machine which very few pinari have with them. Starting from machine chadhana (assembling pulleys and belt and rest of the set up) and working on it, he does it ritually. 62-year-old chacha feels that he earned lot of money and reputation because of that machine only. The whole machine frame and body made out of babul wood. Even pulleys are made of wood itself and sutali or nylon rope as a belt. It has shafts and flywheel comb shaped blade made out of cast iron. Handle provided on right side and height adjusted for working in squatted position. Assembling is done in 5-10 minutes, needs two spanners and a screwdriver. Blade is covered which can be removed simply by taking back the 'u' shaped locking bar. Its weight is such that a person can lift it easily. It is tied on bicycle carrier and taken from village to village, house to house.



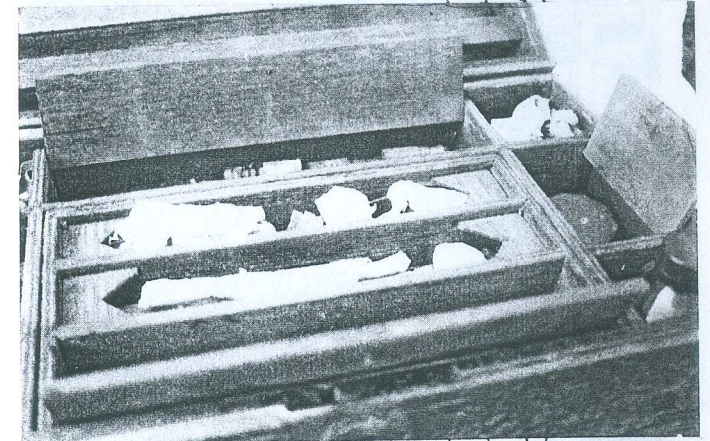
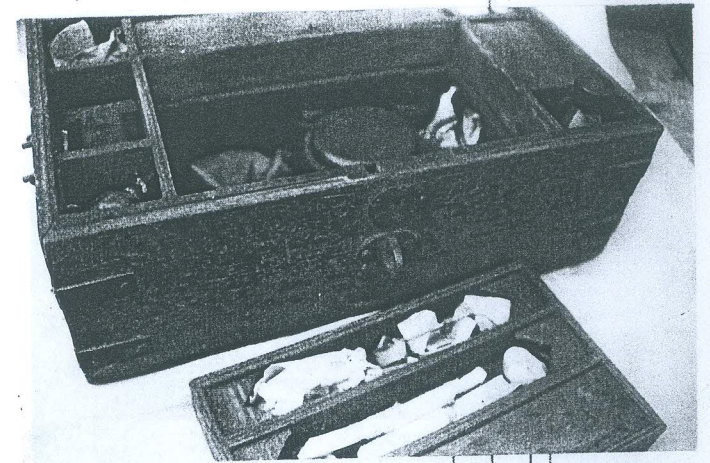
TOOL BOX FOR GOLD-SMITH

It's a wooden box with lot of compartments called "*khate*" inside it for putting all tools required for making jewelry, weighing balance, small metal moulds. Divided in to two levels upper part can be removed for accessing lower portion of the box. Each of this is provided with cover /lid on it. Brass plates at each corner make the box rugged and add to good appearance from outside.

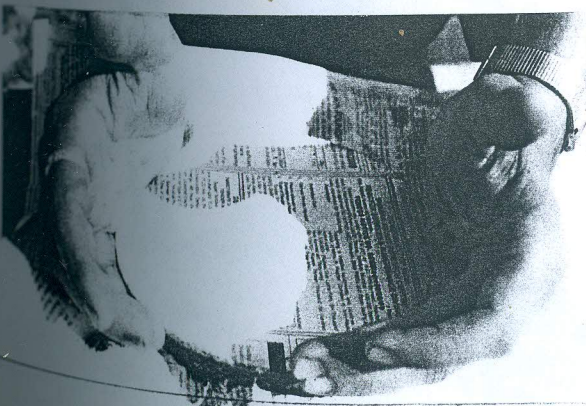
Use of lot of craftsmen ship and precisely made elements defines its use and not an ordinary luggage, storing box

BADAGI:

Wooden bowl carved out of wood log. To prepare chilly-chatani and to store it for long time. Does not get spoiled for long time and gives the same taste.



3. CRAFT & GAME



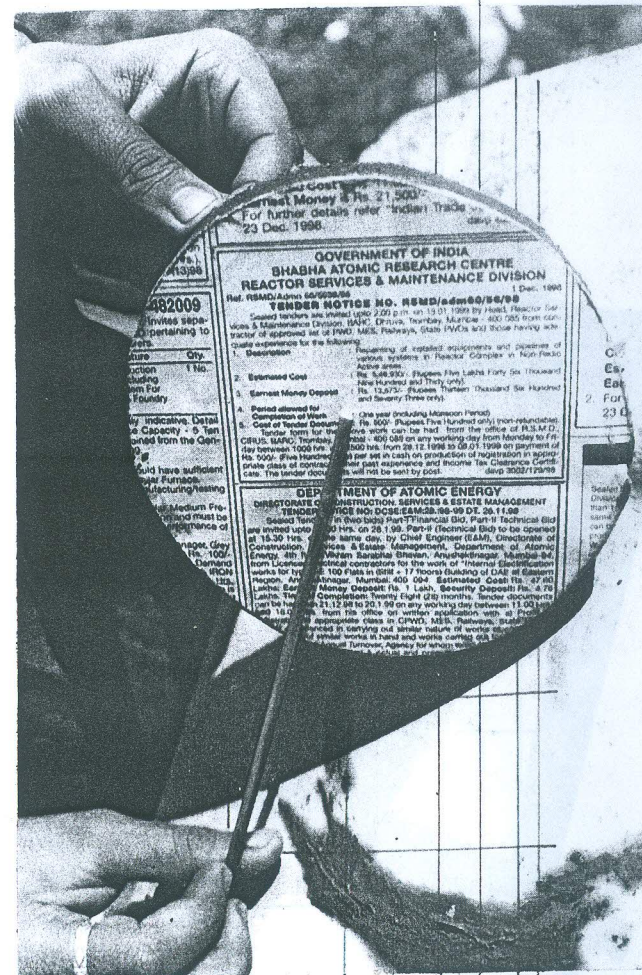
DAFALI:

This use to be exercise in schools.

Mandoi, clay and paper are used to make this dafali.

A metal plate ring riveted used in bullock carts or from any other agricultural tool and plants is use as a base for dafali. Clay made out of black soil-which is sticky and water in it, is applied over the rim out side. Then place ordinary peace of newspaper on it press the paper gently against rim. After that paper gets cut off at the bottom and dafali is ready. Then put it in sunlight, paper gets stretched up which produces better sound.

This is better tool for learning sound as change in paper quality changes it; different sizes of ring also helps in creating different sounds. Applying clay on rim, making clay in preparation. Putting paper on it and fixing without damaging it leads to improved skills and in competition children make better and better dafali.



C. E. For 23

23

GOVERNMENT OF INDIA
BHABHA ATOMIC RESEARCH CENTRE
REACTOR SERVICES & MAINTENANCE DIVISION
 Tender Notice No. RSM/MS/4000/90/90
 Dated: 23 Dec. 1990

Interested parties are invited to submit bids up to 10.01.1991 by 11.00 AM. Reactor Services & Maintenance Division, BARC, Centre, Tarapur, Maharashtra - 401 505 from contractor of approved list of PWD, MSB, Railway, State PWDs and those having adequate experience for the following:

1. Description: Repairing of existing equipments and installation of various systems in Reactor Complex at Non-Fuelled Atomic Area.
 Rs. 4,88,800/- (Rupees Four Lakh Forty Six Thousand Eight Hundred and Thirty Two/-)

2. Estimated Cost: Rs. 12,00,000/- (Rupees Twelve Lakh Thousand Six Hundred and Seventy Three only)

3. Period allowed for Completion of Work: 180 Days (Rupees Five Hundred only) (non-refundable).
 Tender form for the work can be had from the office of R.S.M.D., BARC, MSB, Tarapur, Maharashtra - 401 505 on any working day from Monday to Friday between 10.00 AM to 4.00 PM. Estimated Cost Rs. 4,88,800/- (Rupees Four Lakh Forty Six Thousand Eight Hundred and Thirty Two/-) per set in cash on production of registration in appropriate class of contractor's certificate and Income Tax Clearance Certificate. The tender documents will not be sent by post.

DEPARTMENT OF ATOMIC ENERGY
 REACTOR SERVICES & MAINTENANCE DIVISION
 TENDER NOTICE NO. RSM/MS/4000/90/90 DATED 23.12.1990
 Interested parties are invited to submit bids up to 10.01.1991 by 11.00 AM. Reactor Services & Maintenance Division, BARC, Centre, Tarapur, Maharashtra - 401 505 from contractor of approved list of PWD, MSB, Railway, State PWDs and those having adequate experience for the following:

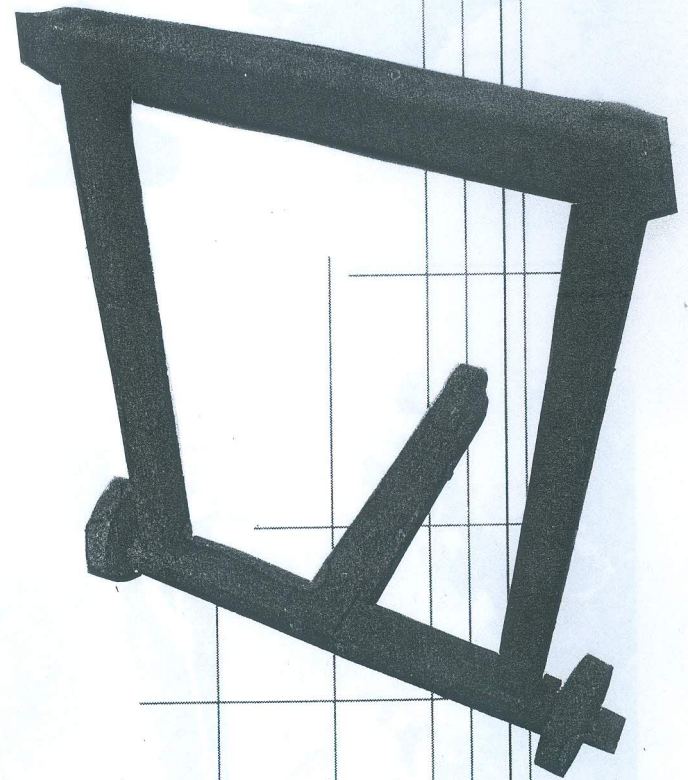
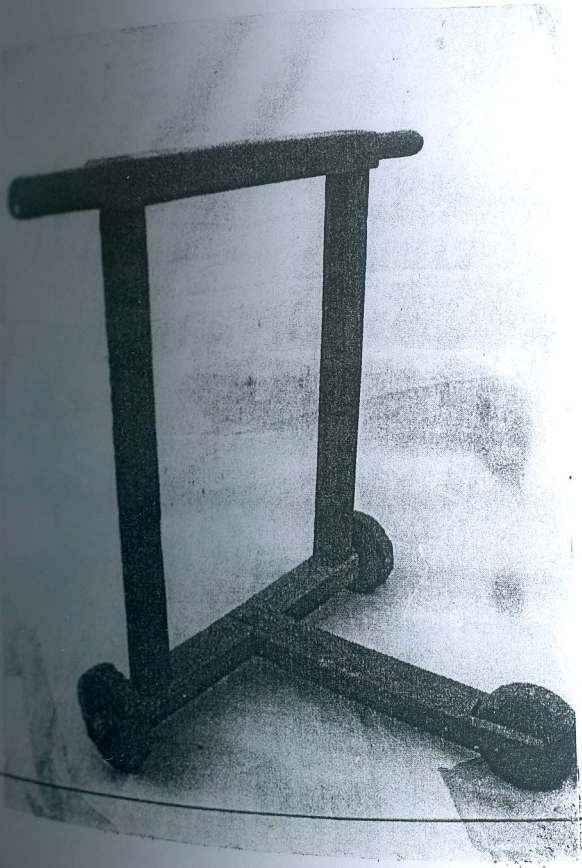
1. Description: Repairing of existing equipments and installation of various systems in Reactor Complex at Non-Fuelled Atomic Area.
 Rs. 4,88,800/- (Rupees Four Lakh Forty Six Thousand Eight Hundred and Thirty Two/-)

2. Estimated Cost: Rs. 12,00,000/- (Rupees Twelve Lakh Thousand Six Hundred and Seventy Three only)

3. Period allowed for Completion of Work: 180 Days (Rupees Five Hundred only) (non-refundable).
 Tender form for the work can be had from the office of R.S.M.D., BARC, MSB, Tarapur, Maharashtra - 401 505 on any working day from Monday to Friday between 10.00 AM to 4.00 PM. Estimated Cost Rs. 4,88,800/- (Rupees Four Lakh Forty Six Thousand Eight Hundred and Thirty Two/-) per set in cash on production of registration in appropriate class of contractor's certificate and Income Tax Clearance Certificate. The tender documents will not be sent by post.

PAT-GADI:

Age old cart three wheeler for kids. It's a kind of walking aid for kids and they learn on use this for playing, for joy rides. No standardization in making but carpenter makes it according to the user i.e. Height of the kid who is going to use it. A vertical rectangular frame with rounded extensions at top for gripping. Third wheel extended from the base to front side, on single wooden block. Wooden ridges or thick nails are inserted in cylindrical part, so that wheel should not come out of it. The whole toy made out of wood only including wheels is light in weight and stable enough. When kid stands, grips the handle and starts walking; he slightly leans forward and then it becomes perfectly balanced setup.



HATUSA:

A stringed tool for separating cotton lumps.

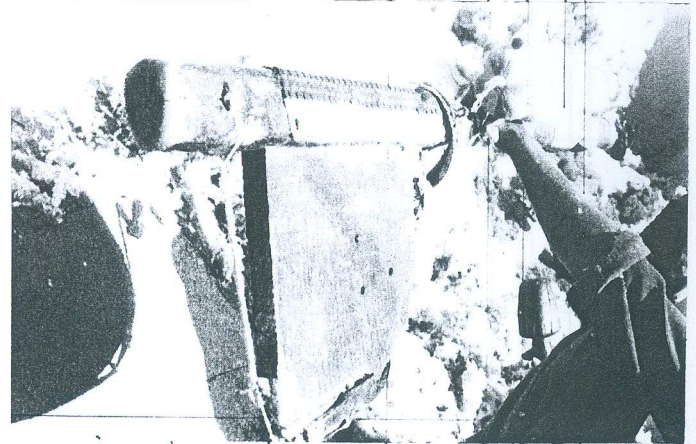
Samsuddin Pinjari in Pune City feels that he has been successful in maintaining the Pinjari's tradition. It separates the cotton with out cutting the fiber of it and so the foaming happens in most natural way and to the fullest extent. Seeing a person working on it is a nice audiovisual treat. Looks like another bigger version of string instrument.

Its an ultimate combination of use of material and their properties like bicycle tube for taking vibrations, nylon string for its elasticity and strength makes it long lasting.

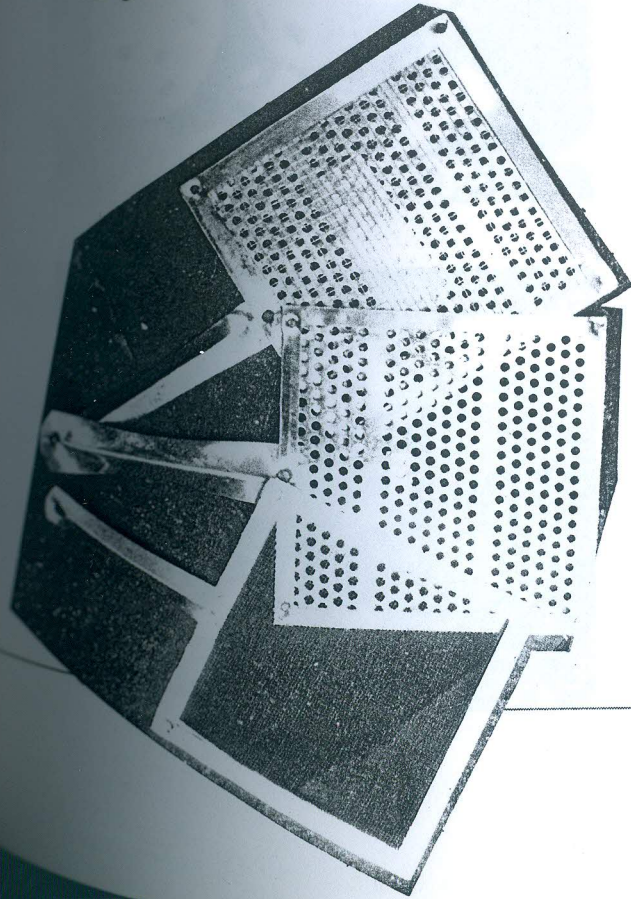
Freely hanged from the roof of a house using rubber tube and rope. This rope ties the *Kaman* (wooden horizontal element)

Where *hatusa* (cotton filled cylindrical pillow) is tied again for better and tight gripping. One end fitted with wood plate on which passes the (string) and is knotted on other end.

During operation rhythm gets developed between handle movements and string that produces sounds.



With the entry of new products in kitchen, some of the old products are getting replaced by new one. For example food processor has replaced the grinding stone and khalbatta. Likewise use of LPG gas stove have changed some of the accessories.



MODERN KITCHEN AID

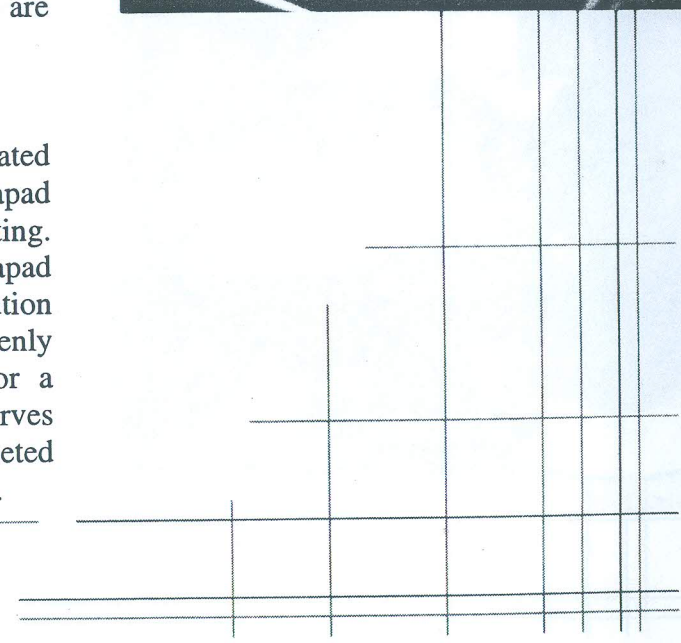
WOODEN DISK WITH HANDLE

used in Roti making it's a simple tool made out of turned wood and handle fixed in it. Further circular shape is more acceptable. Lacquered finish makes it more attractive. Product has come up because of use of nonstick cookwares where the traditional 'Sarota' is of no use, to avoid scratches on the surface. So it strictly requires wooden or thermoset plastic tools which are comparatively costly.



MESH FOR ROASTING PAPAD

To roast a papad needs evenly heated surface. It use to be coal to roast papad which gives overall heating /roasting. But on LPG flame it burns the papad due to over heating. The simple solution to spread the flame and get the evenly heated surface. A mesh /screen or a plate with holes punched on it serves the purpose. Border of folded tin riveted at corners. Handle of tin is provided.

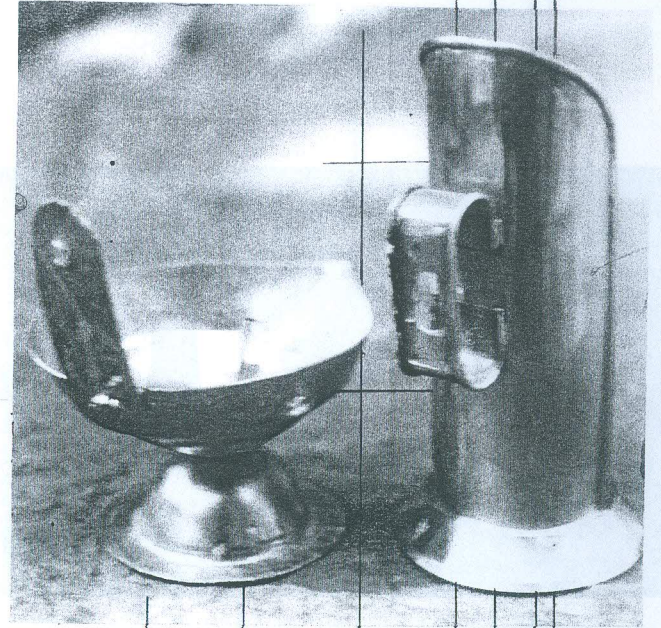
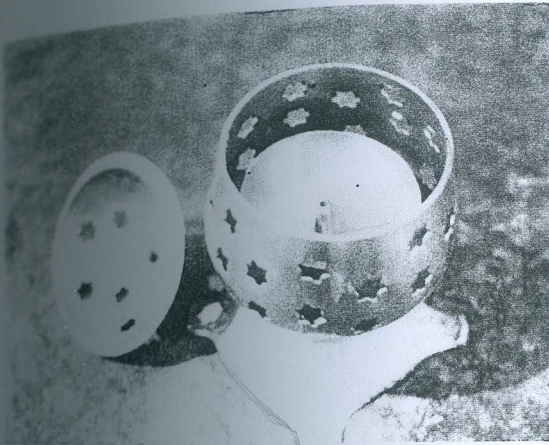


TRADITIONAL TOUCH

Shape and color gives clues of traditional products.

Use of copper in *DIYA*, same material is used in candle stand. It gives the rich, religious feel to it. It has got its base and a hole at back ^{cut} to hang it on nail.

Closed from the top still holes all over of star shaped when lighted gives the dramatic effect. Made in two shells. Hemispherical base for oil centrally raised piece to accommodate wick. Base formed on four legs, which are like *Chourang*.



NEW CONCEPTS

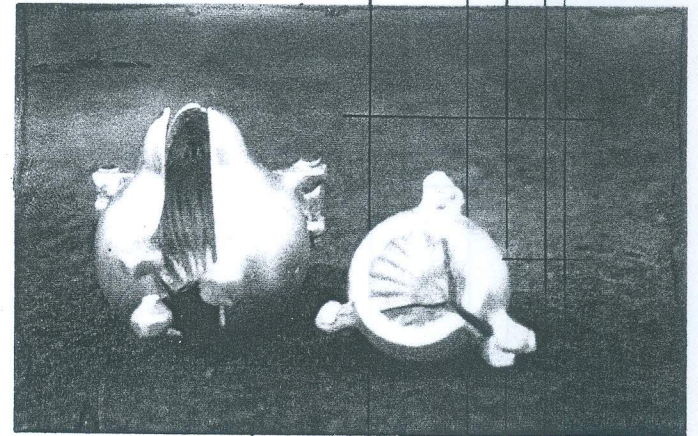
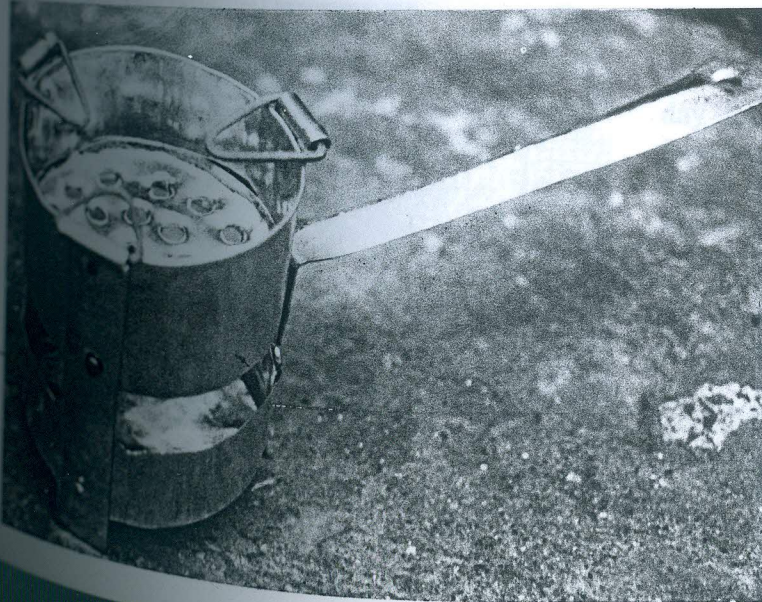
DHUP SHEGADI-

Product used for specific purpose. Initially fakirs use to carry with them for burning dhup that generates a kind of smoke that makes the surrounding feel energetic for some time.

Made out of tin plates riveted at joints. Upper half provided with holes so that ash falls down and another small cup at bottom

MODAK SACHA-

Aluminum mould in three pieces, hinged, split opens in three.

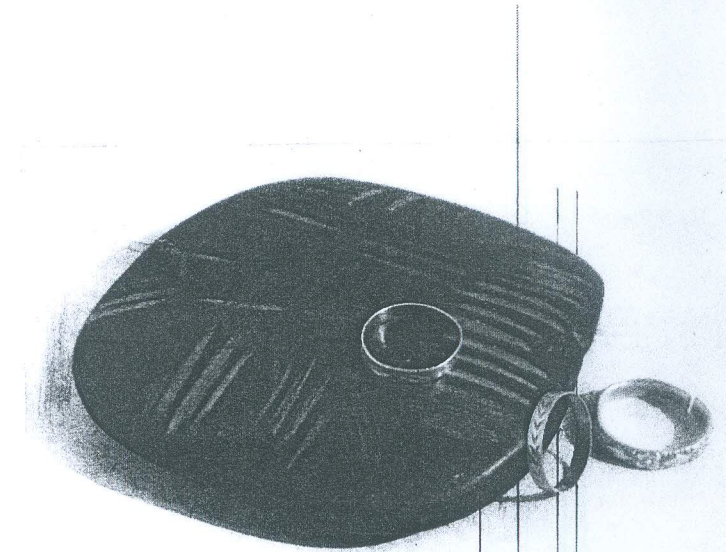
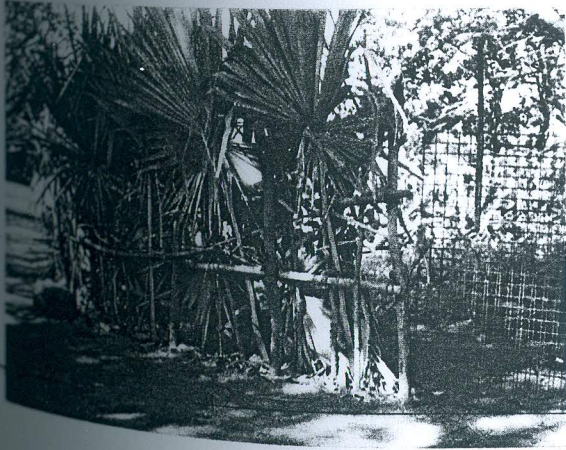


USE OF NATURAL MATERIAL

KASOUTI STONE:

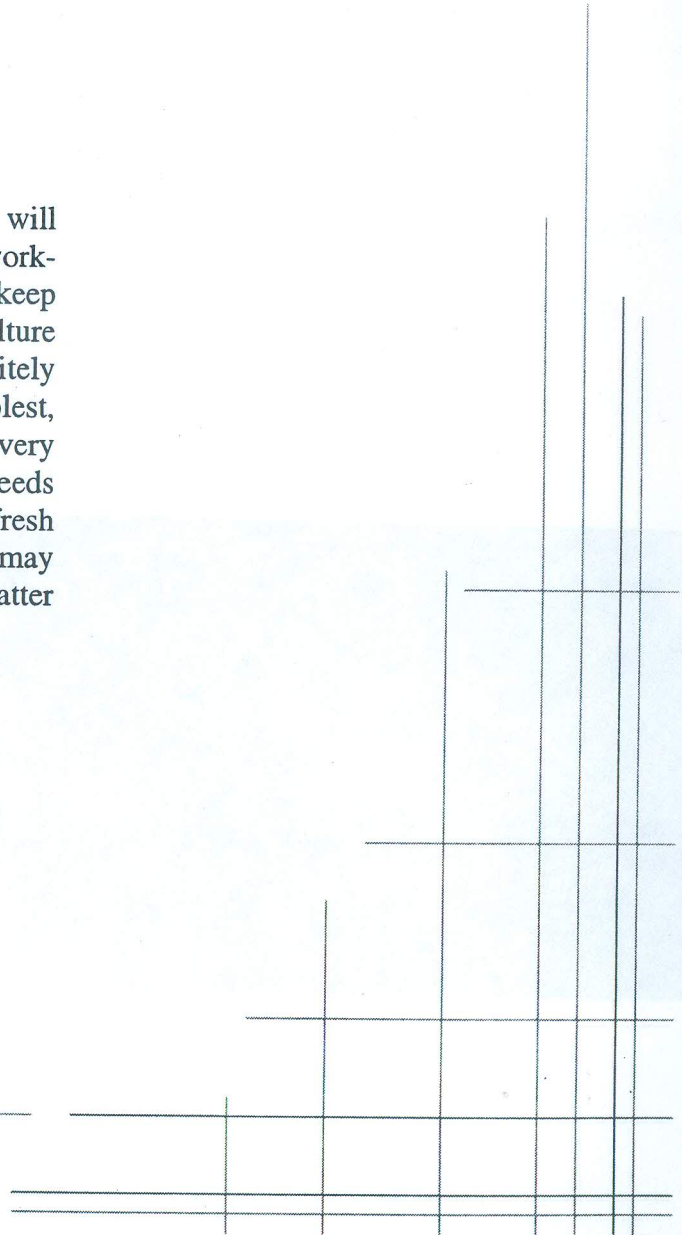
It's a black stone found in particular kind of riverbanks near Gujrat and Rajasthan. Used for test gold. Some of the highly skilled and experienced goldsmith can tell the approximate carat of the gold, just by rubbing the metal on the surface and the yellow and brightness that is getting reflection stone surface.

Use of lot of such natural materials in day to day life use of bamboo for – *Mandap*- temporary extensions etc. Coconut leaves for making *zadu*. As shown in picture for fencing.



CONCLUSION:

The documentation done above will help the design students in their work-study. As most of the time we keep taking references from western culture and their products. This will definitely help in understanding the simplest, logical approach taken to develop very essential products of day to day needs and will help in developing fresh identity to our products. Which may lead in creating unique or for that matter Indian identity in products.





EXTREME EXAMPLES OF INDIGENOUS PRODUCT.
