

# ‘SARU’

## Exploring Madhubani Painting In Animation

Animation Design, Degree Project - stage1

Nitish Kumar (07634008)

2007-2009

Project Guide:

Prof. Nina Sabnani

Industrial Design Centre

Indian Institute of Technology, Bombay

# concept

## Fantasy World of A little girl .

Her MAGIC SMILE create firefly in night .  
Firefly create white magical Flowers surrounding  
her house.

Firefly turn Butterfly in morning and White Flowers  
turn colorful flower.....

Girl catch the Butterfly ,then flowers vanishes.  
When she free the butterfly another magic created

.....her another fantasy world

# Exploration of Madhubani Painting



Madhubani Painting is visual art tradition of Mithila(Madhubani, Bihar).

- They used to paint on mud wall, floors and cloth during family events, ceremonies, marriages and also daily life *alpana* on floors. Specially '*Kobar paintings*'(for honeymoon night) in marriage ceremony.

- paste of cow dung and mud on the walls and floors to give a perfect black background on which pictures were drawn with white rice paste.

- Also applied a thin layer of cow dung and mud paste on canvases to give a more authentic look and also because it helps in proper absorption of color.

- They use natural colour made from leaves(green) , flowers(red), turmeric (*haldi*—yellow), cow dung(greenish black), rice paste(white), indigo(neel—blue), *goriya mitti*(orange), charcoal(black), ash(grey) etc.

# Exploration of Madhubani Painting



The attributes of Madhubani paintings :

- Use of bold and bright natural and artificial colors.
- A double line border with simple geometric designs or with ornate floral patterns on it.
- Symbols, lines and patterns supporting the main theme.
- Abstract-like figures, of deities or human.
- The faces of the figures have large bulging eyes and a jolting nose emerging out of the forehead.
- Simplicity in line, tension free line.
- no straight line, not use of scale for line drawing, hand drawn line work.

Characterized by vibrant use of color, underlying symbolism and traditional geometric patterns supporting the main theme.

# Exploration of Madhubani Painting

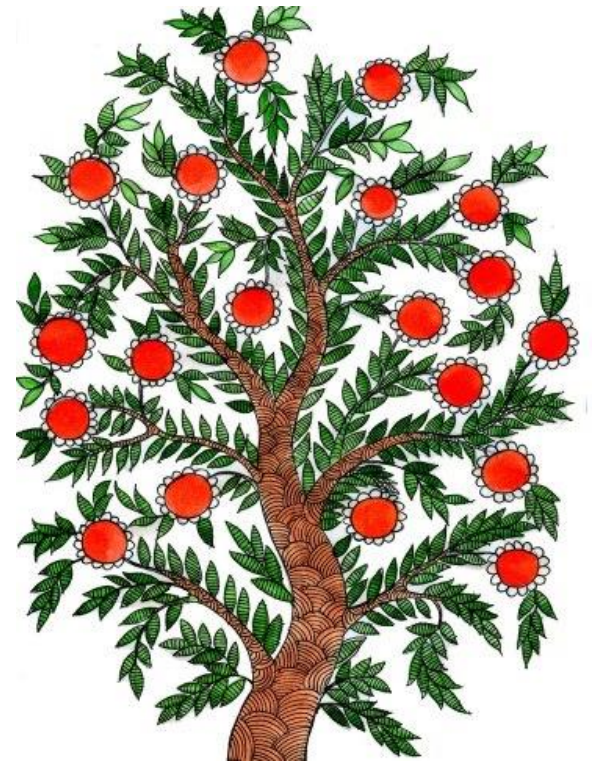
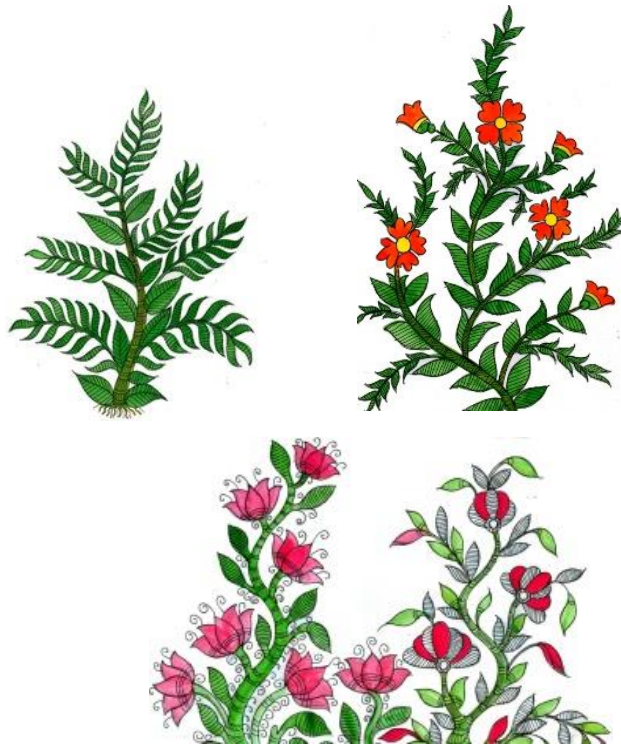
Visual element





# Exploration of Madhubani Painting

Visual element



# Exploration of Madhubani Painting

Visual element



# Story board



Saru, the little girl, planted a flower in her garden and used to water it daily.



She loves it a lot- it defines her happiness.  
She loves to touch its petals and the feel of it



takes her to her dream world.

A pleasant moon lights up the place and her smiles  
create the fireflies.



# Story board



Fireflies generate beautiful white flower

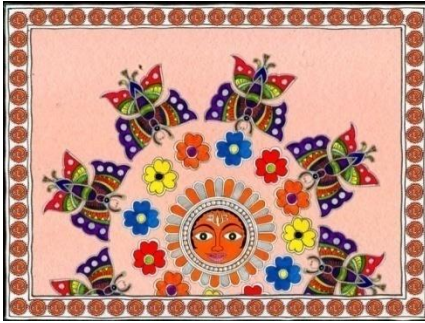


Her housed is surrounded by beautiful white flowers



There are fireflies dancing around the moon, immersing the place in a magical beauty.

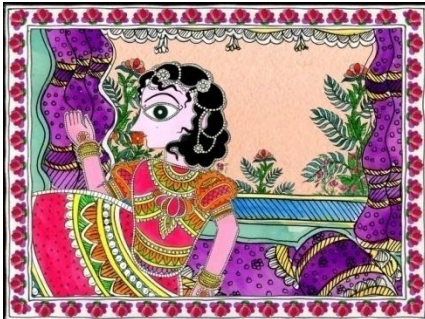
# Story board



Slowly it becomes morning and the sun rises.  
The white flowers of the night have now become  
colourful ones.  
The butterflies dance around the sun.



Saru wakes up into a magical dawn .



She surprised by seeing outside the door

# Story board



She goes out of her house  
Her garden filled with millions of colourful flowers.



The sun's smiling at her and a little butterfly flutters near  
her face.

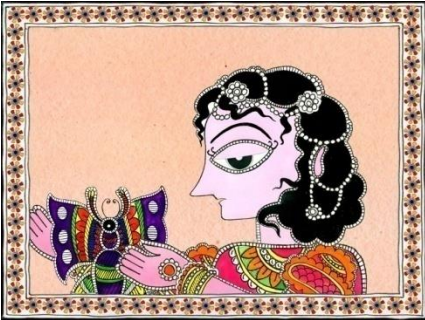


She catches the butterfly and almost instantly

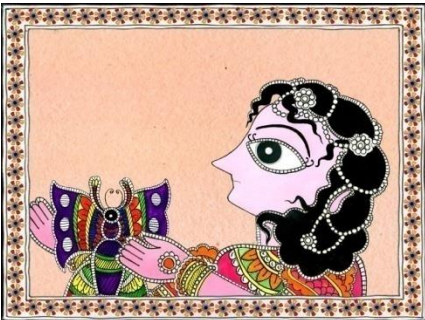
# Story board



All the flowers in her garden wither out



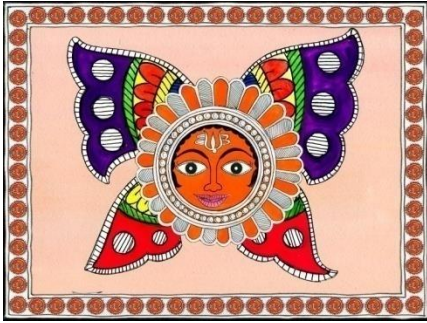
She's extremely sad



looks up at the sun



# Story board



The Sun asks her to free the butterfly she had caught



She lets it go

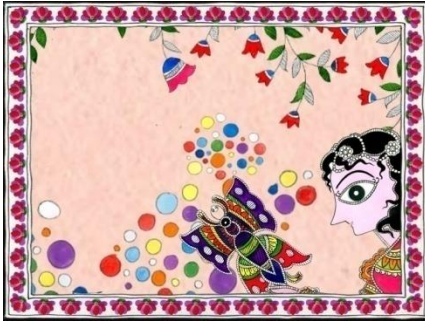


# Story board



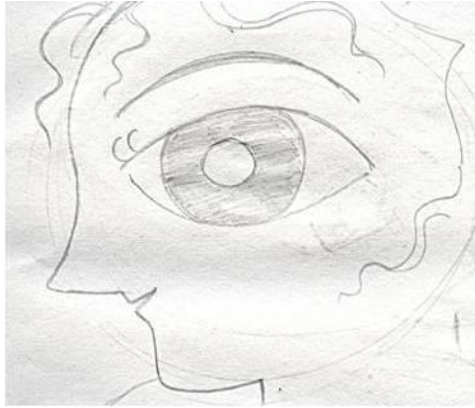
her garden blossoms again.

# Story board



Her happiness has no bounds and she's back into her world of magic

# Character design



Expression: Girl





# Character design



Attitudes: Girl



# Character design





# Concept art





# Concept art





Thank you