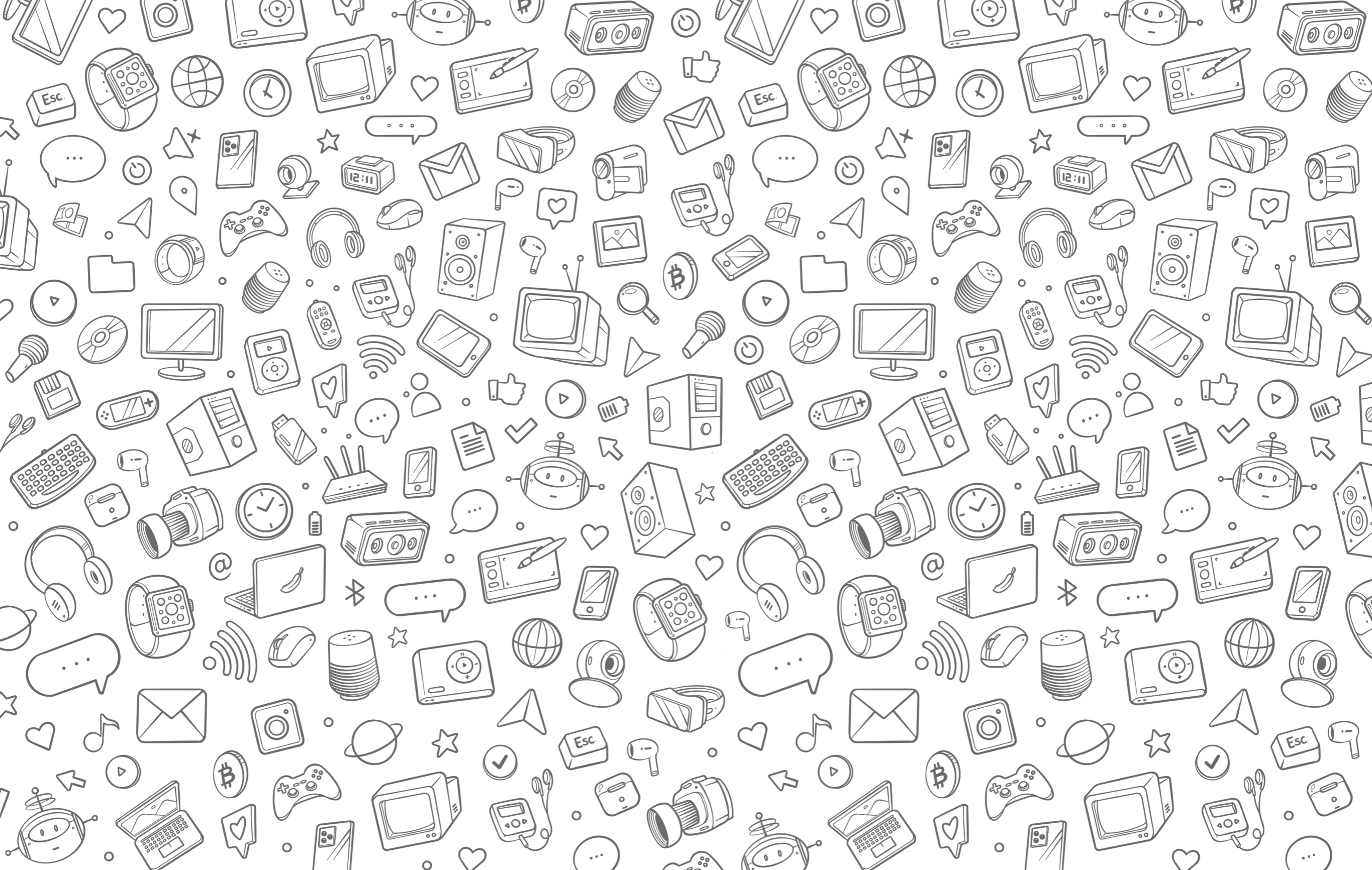


हार्य
tech

f



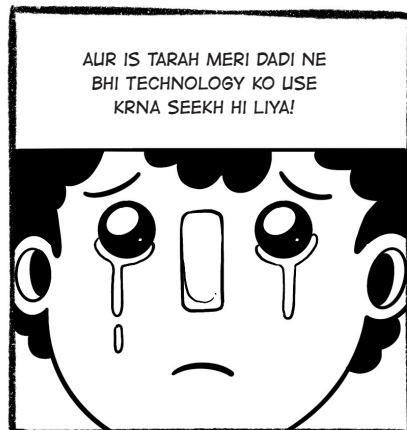
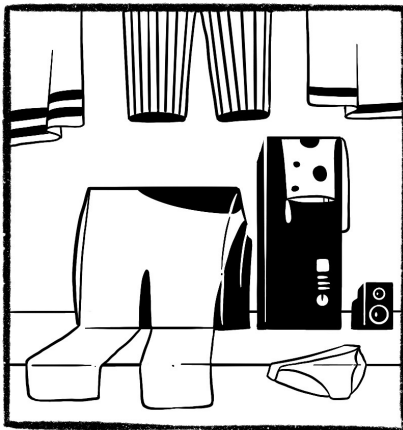
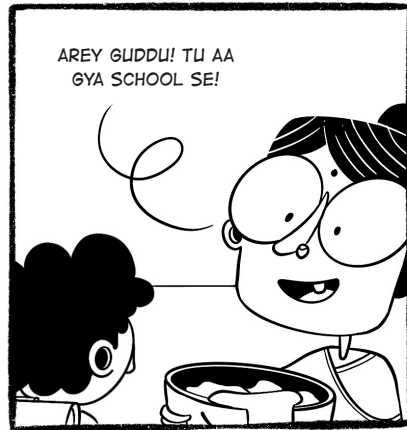
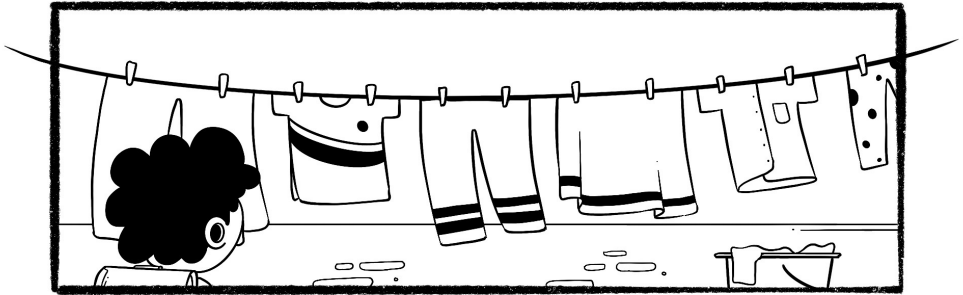


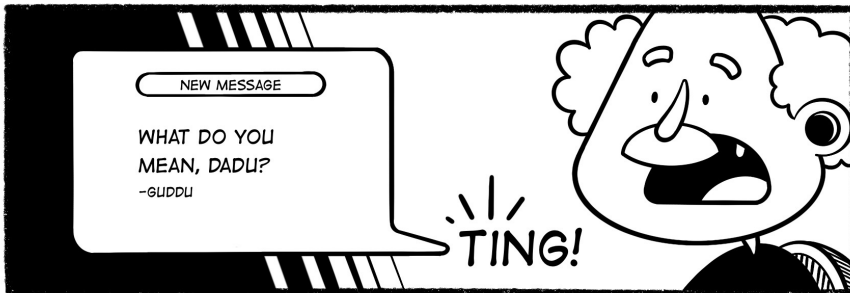
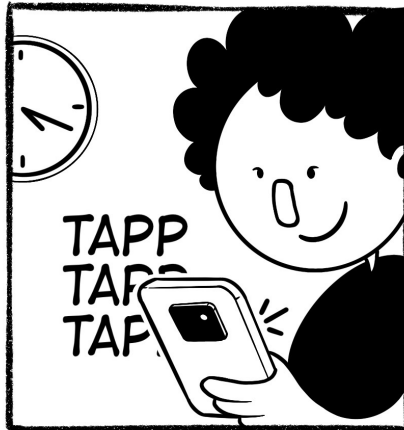
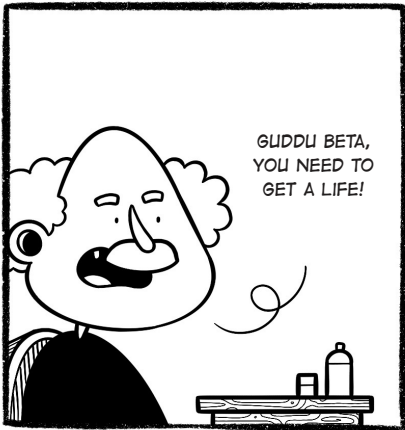
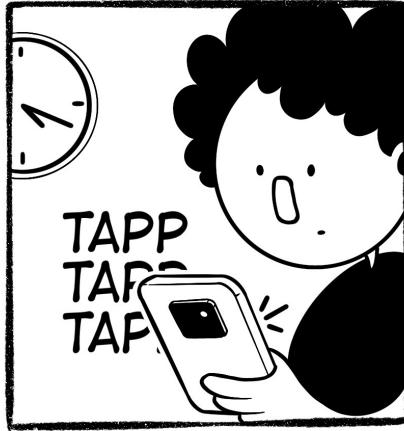
हाय टेक

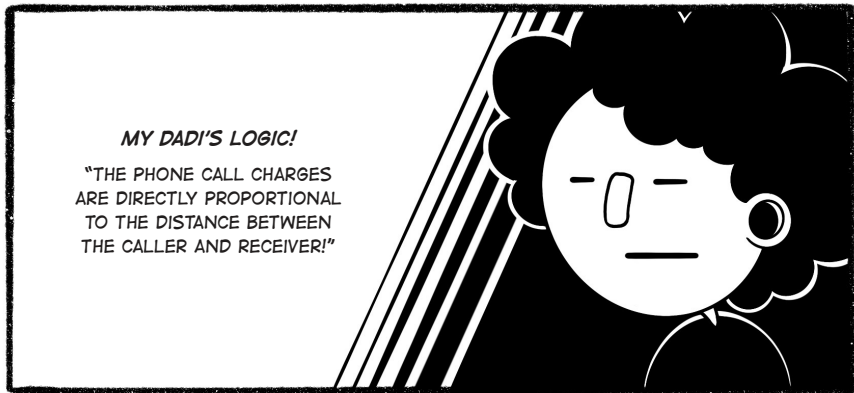
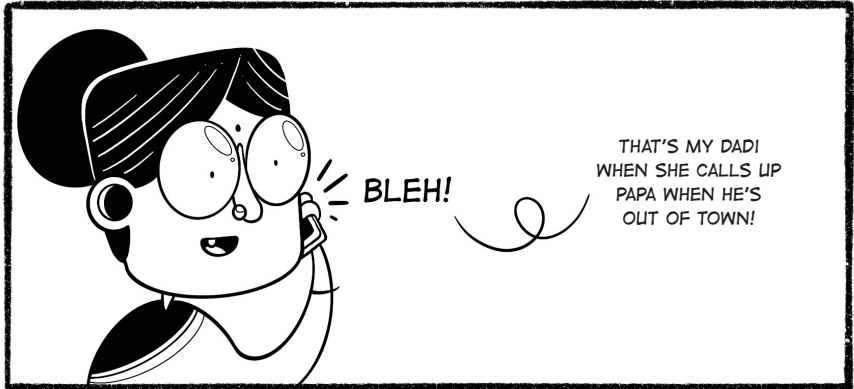
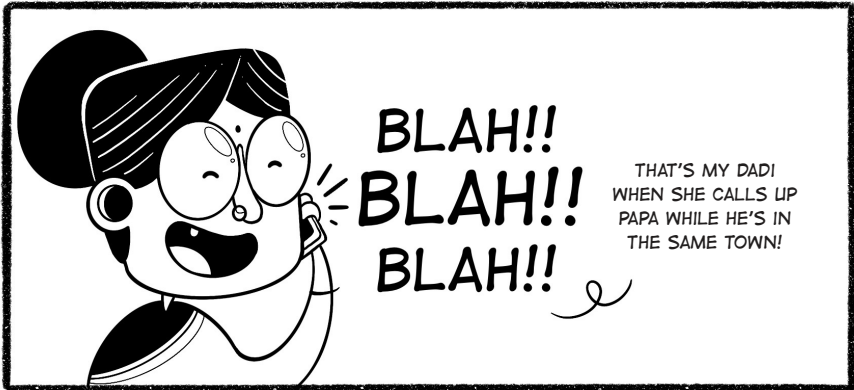
A COMIC SERIES BY
UTKARSH DHILLON

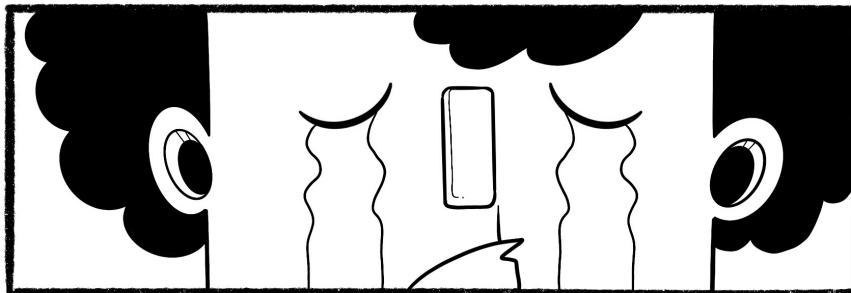
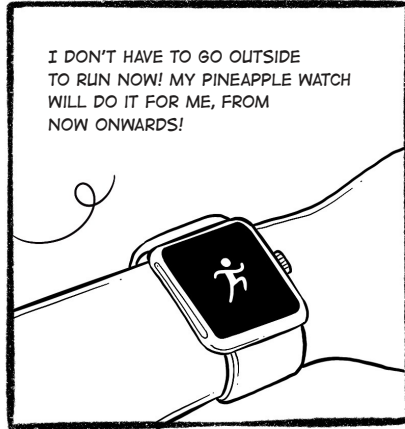
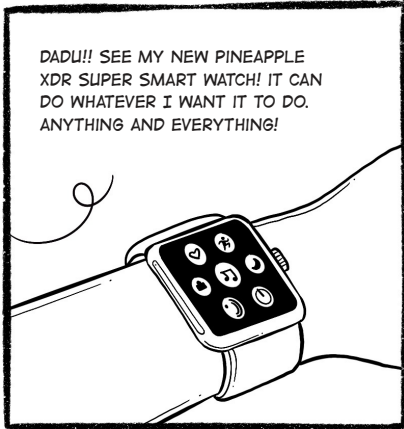


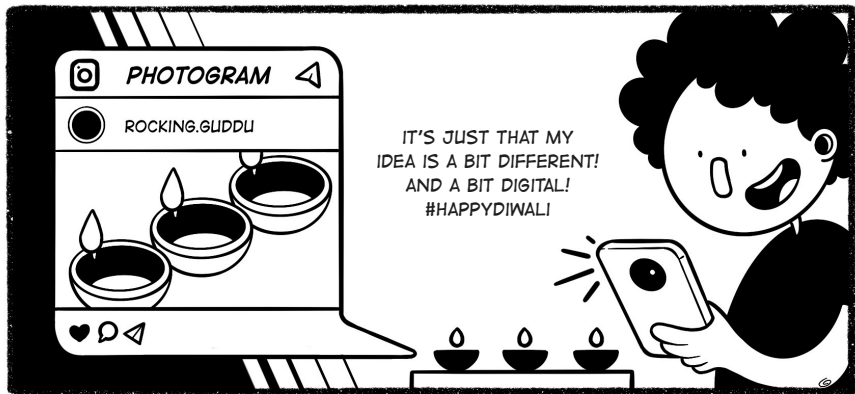
A FEW SNIPPETS FROM
AN INDIAN FAMILY!

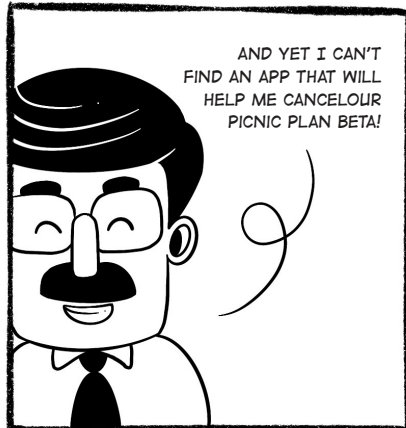


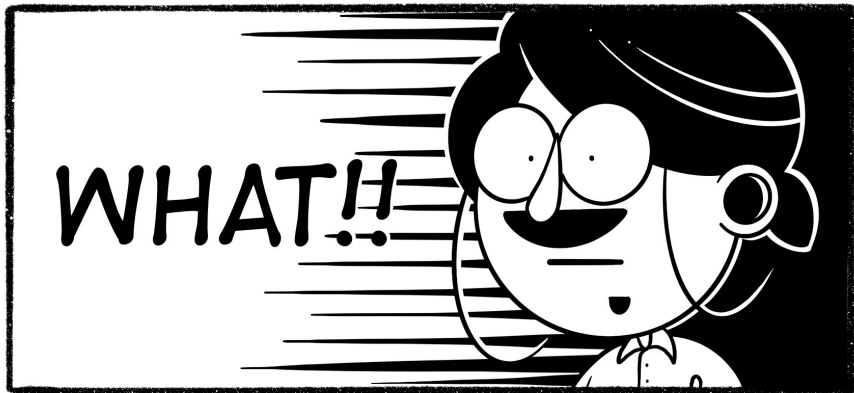
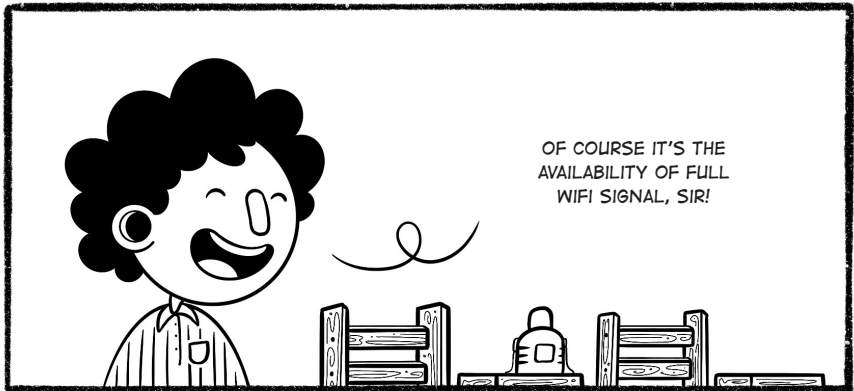


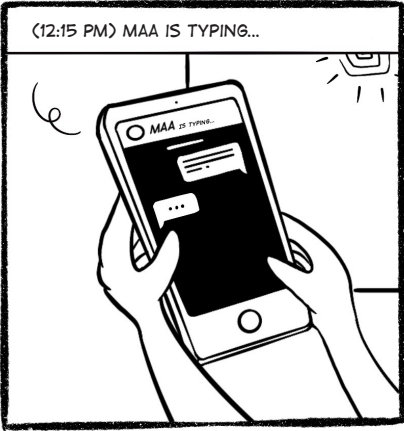


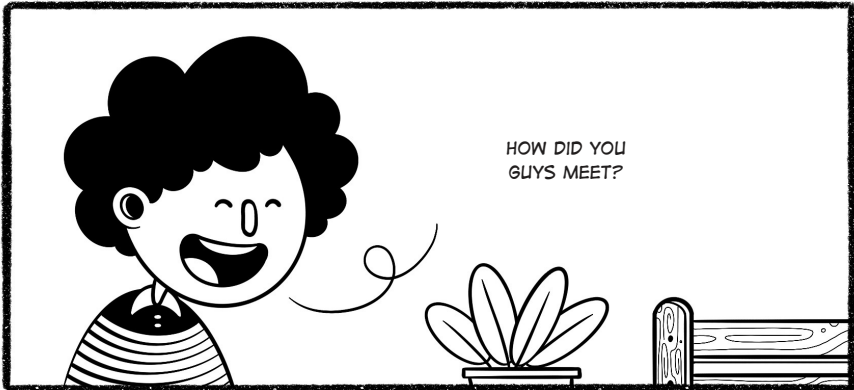




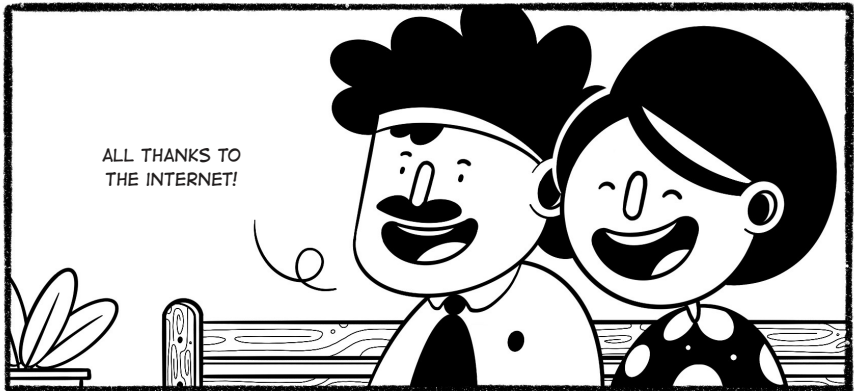








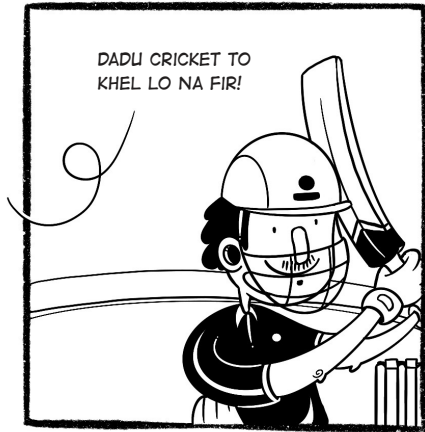
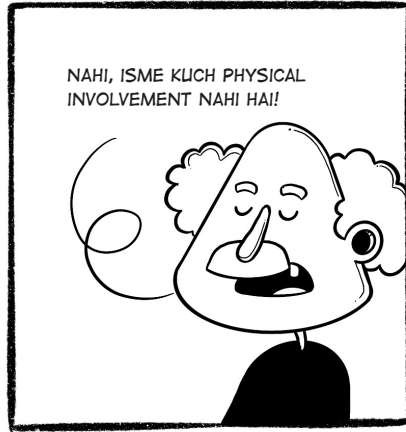
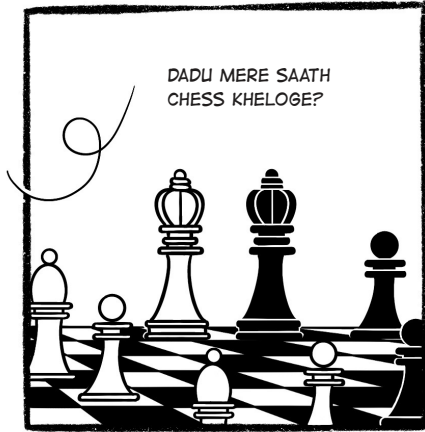
HOW DID YOU
GUYS MEET?

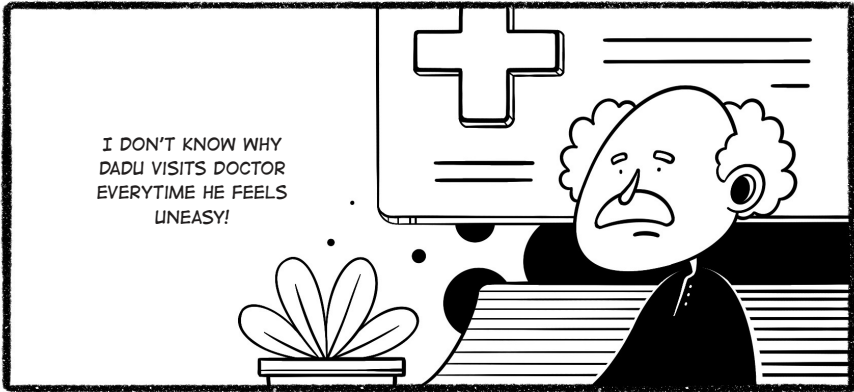


ALL THANKS TO
THE INTERNET!



THIS ONE TIME, THE
INTERNET WAS DOWN!
SO, I HAD TO HEAD OUT.
AND THAT IS HOW I MET
YOUR ALUNT!

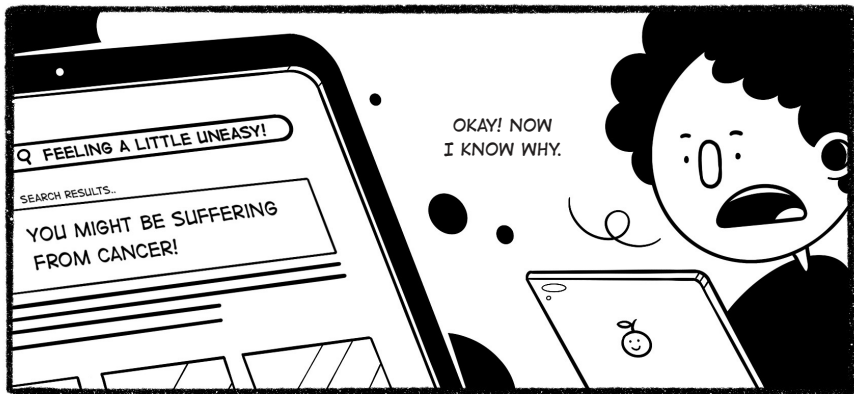




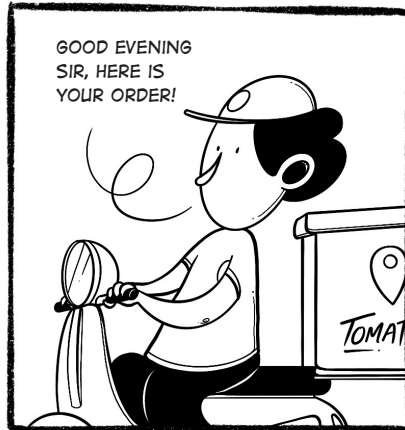
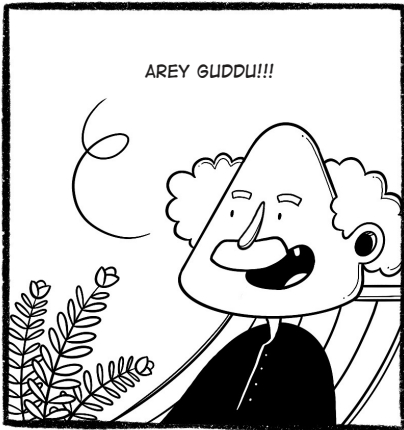
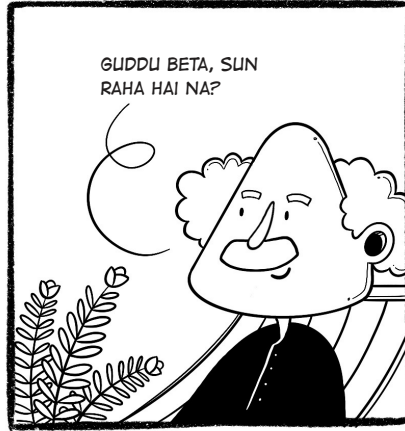
I DON'T KNOW WHY
DADU VISITS DOCTOR
EVERYTIME HE FEELS
UNEASY!

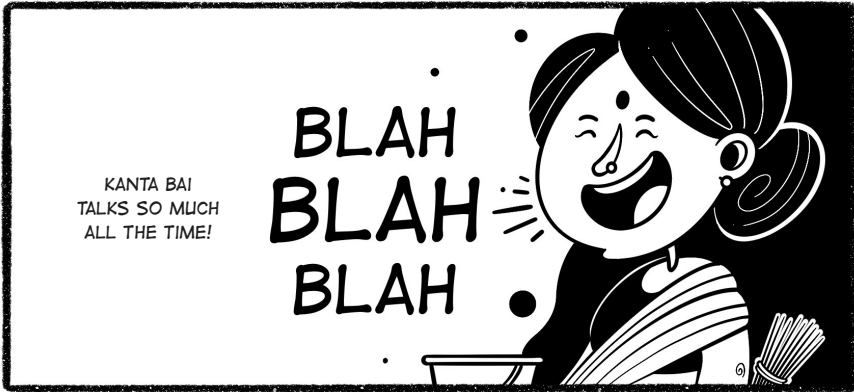


WHEN DR. GOOGLE
CAN DIAGNOSE THE
PROBLEMS WITHIN
SECONDS!



OKAY! NOW
I KNOW WHY.





KANTA BAI
TALKS SO MUCH
ALL THE TIME!

BLAH
BLAH
BLAH

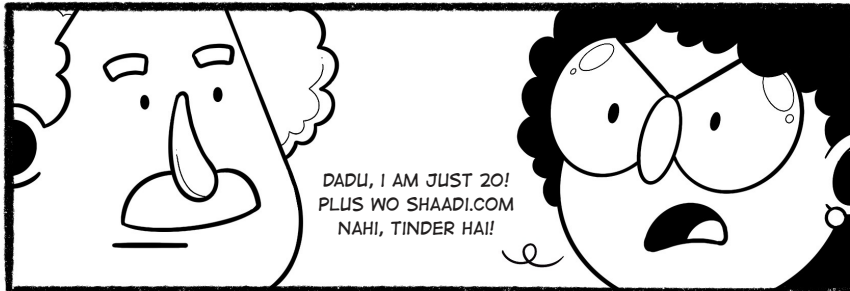
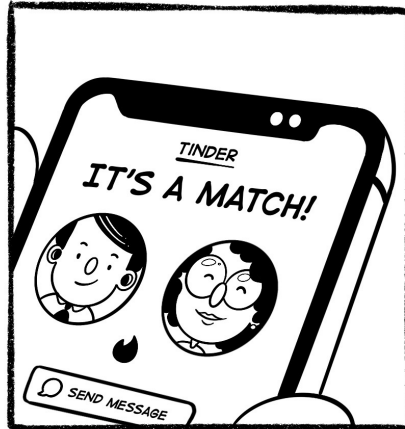


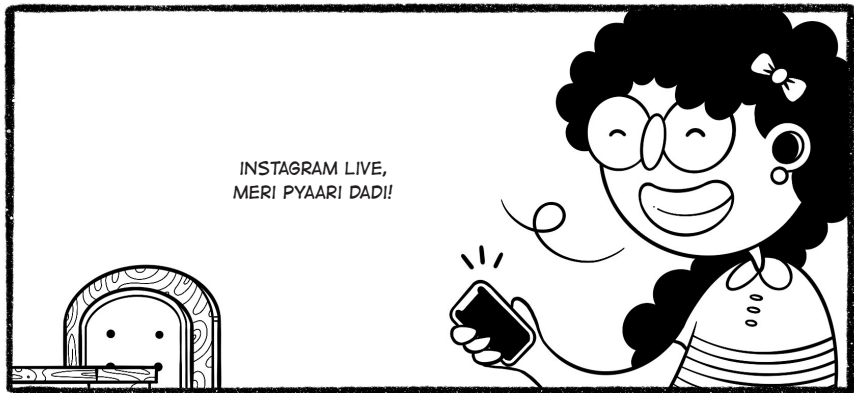
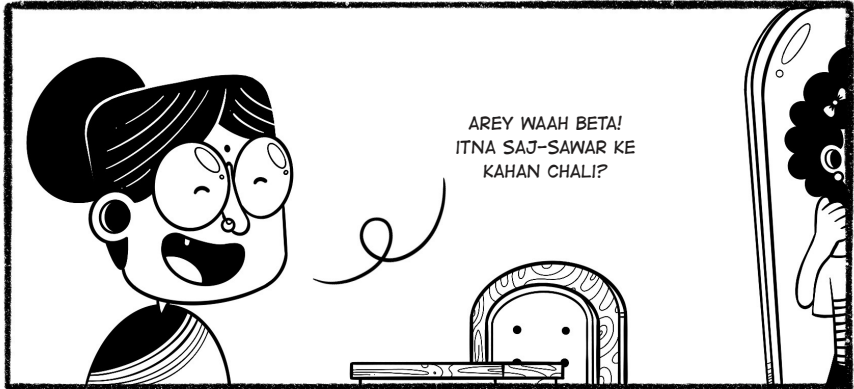
IT GETS
IRRITATING
SOMETIMES!

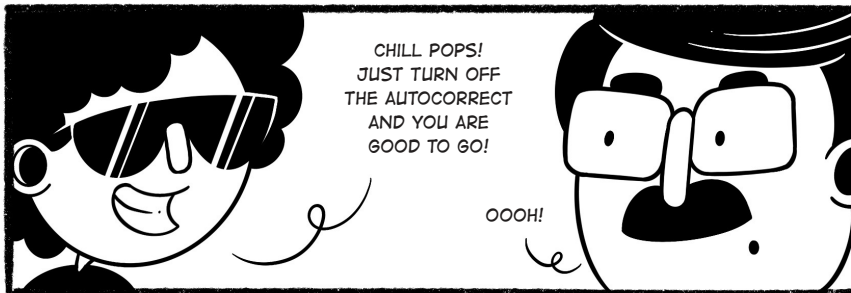
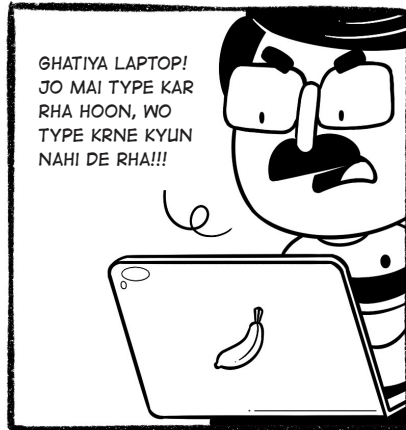
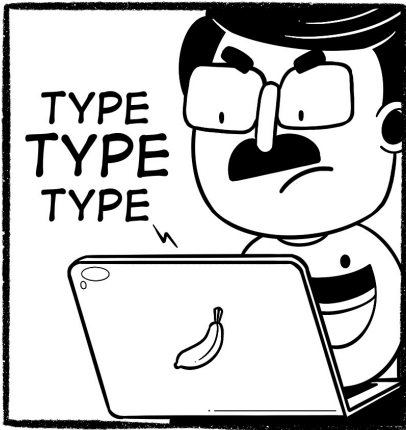
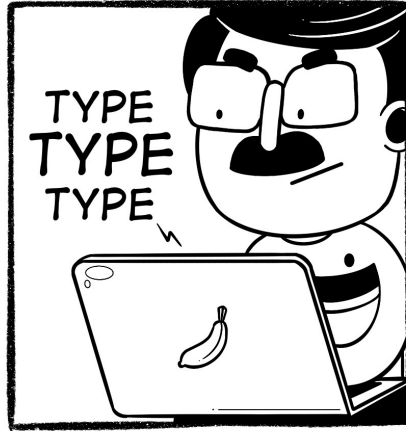
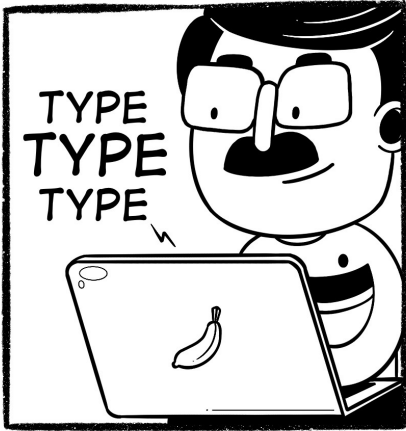
UGH!!
UGH!!
UGH!!
UGH!!
UGH!!

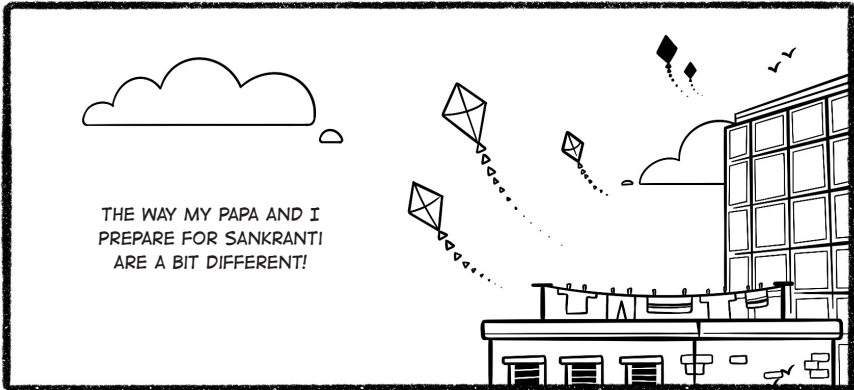


ONLY IF I COULD
"UNSUBSCRIBE" HER
IN REAL LIFE!
HEHE HEHE

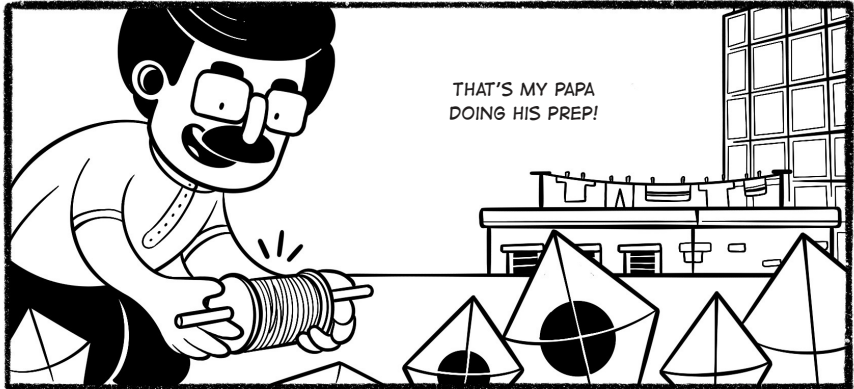




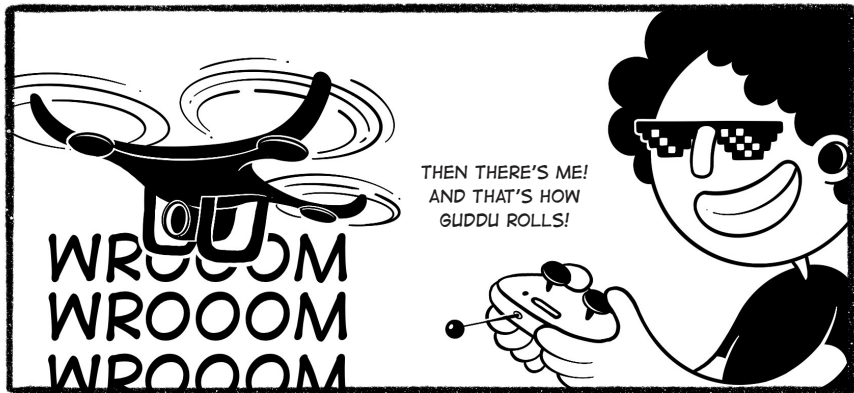




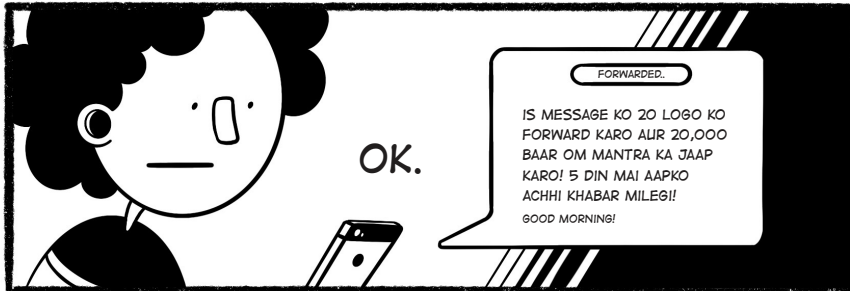
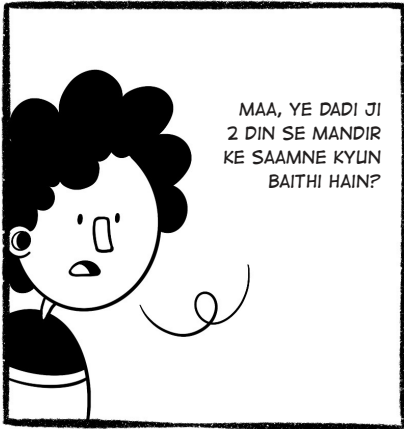
THE WAY MY PAPA AND I
PREPARE FOR SANKRANTI
ARE A BIT DIFFERENT!

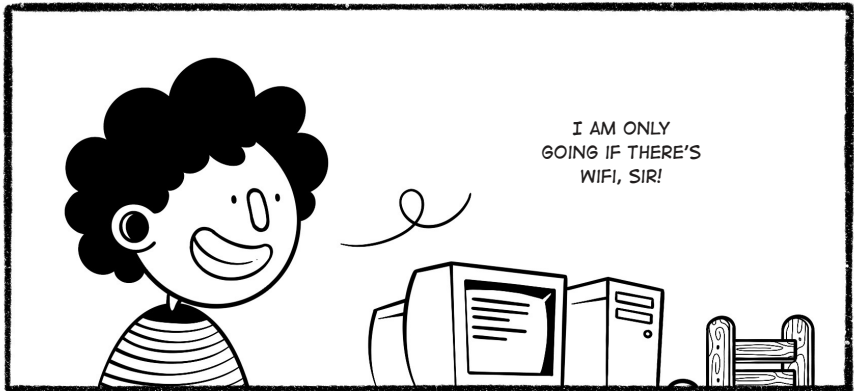
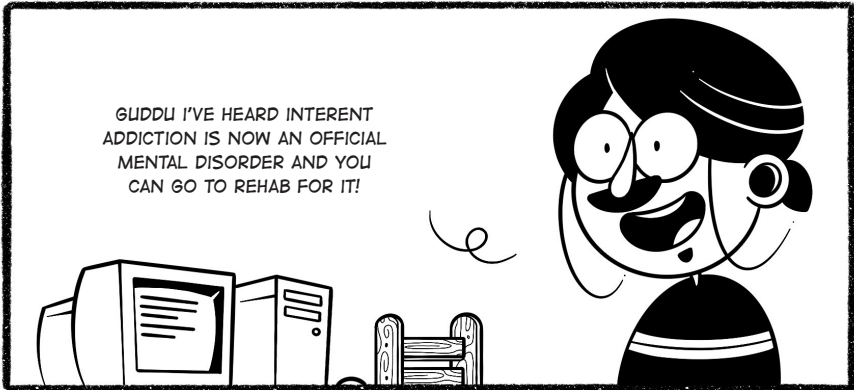


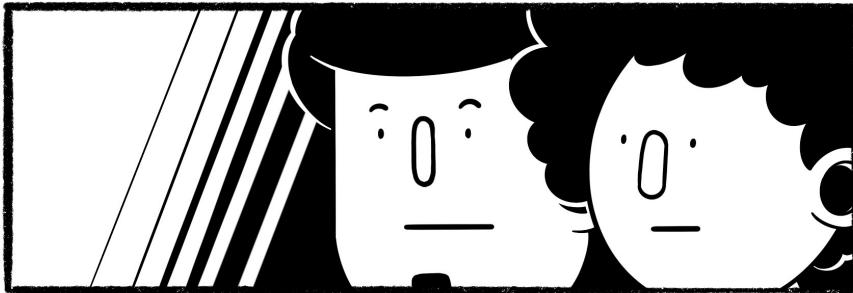
THAT'S MY PAPA
DOING HIS PREP!

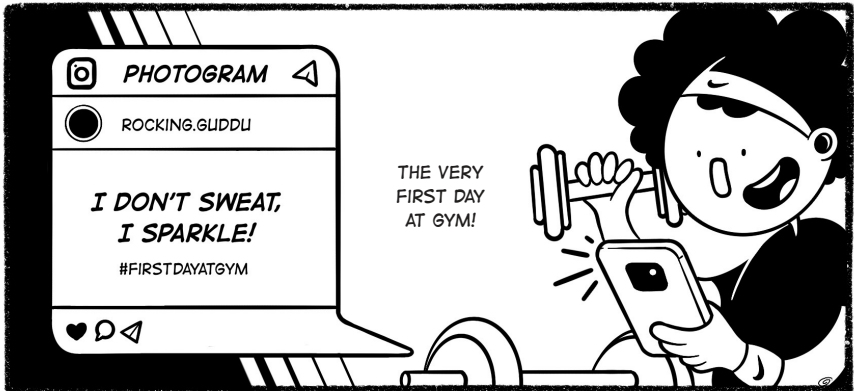


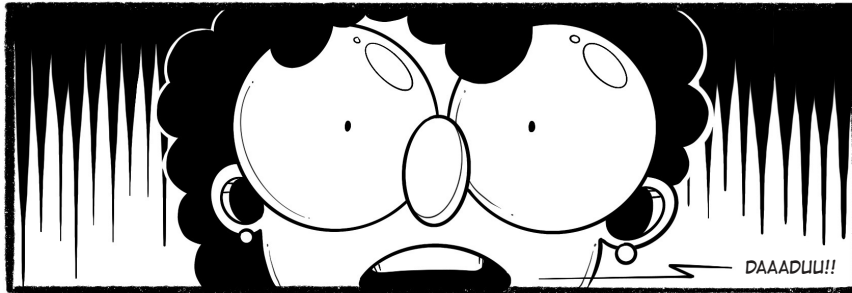
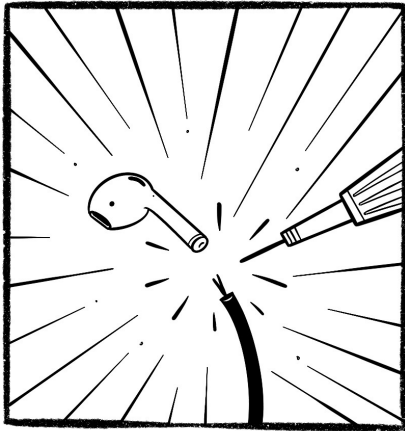
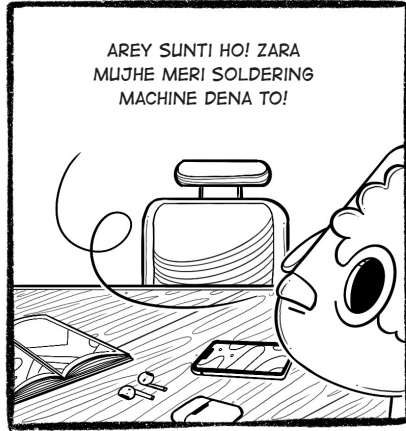
THEN THERE'S ME!
AND THAT'S HOW
GUDDU ROLLS!

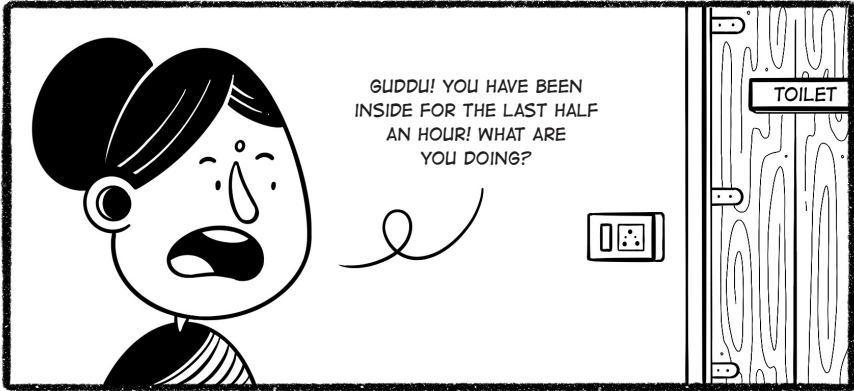




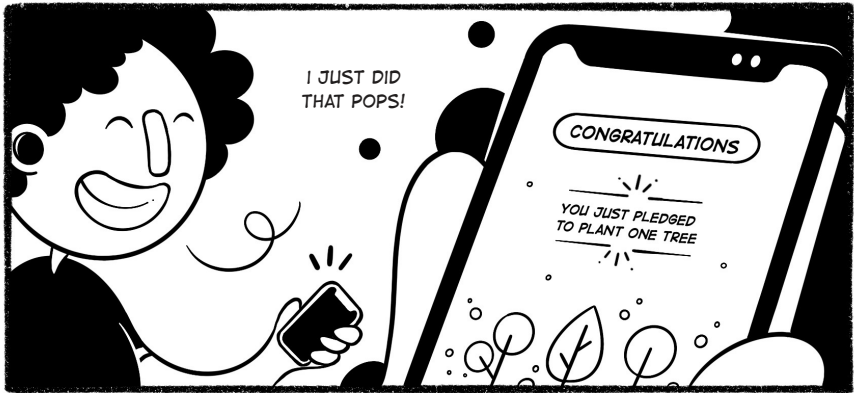


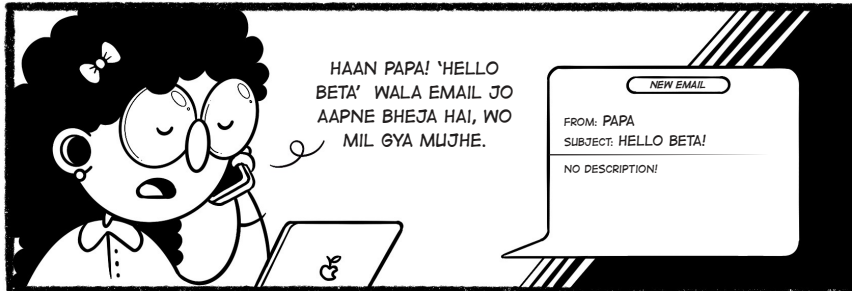
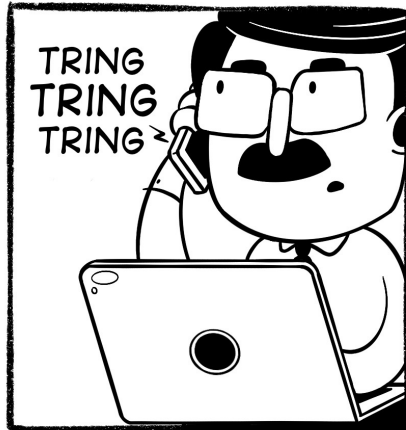
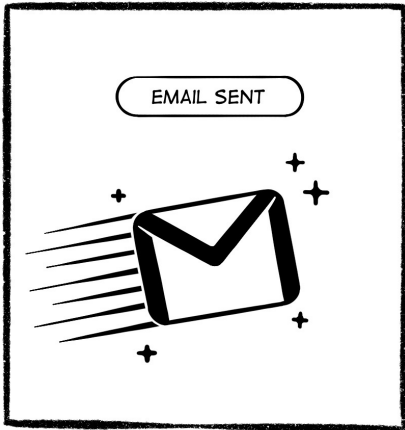
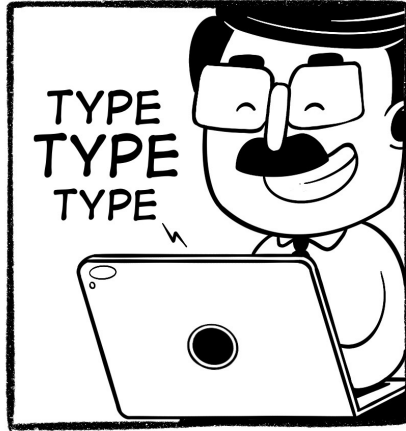
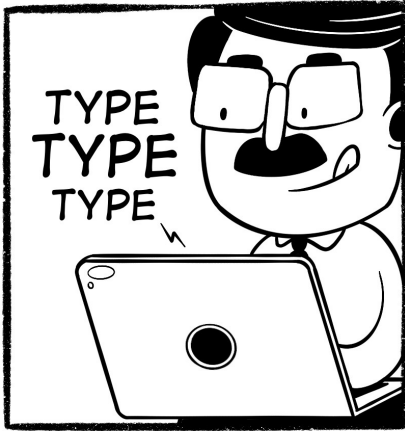


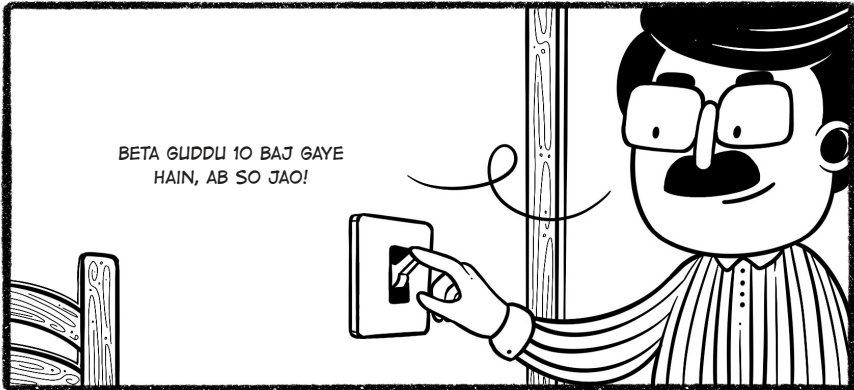




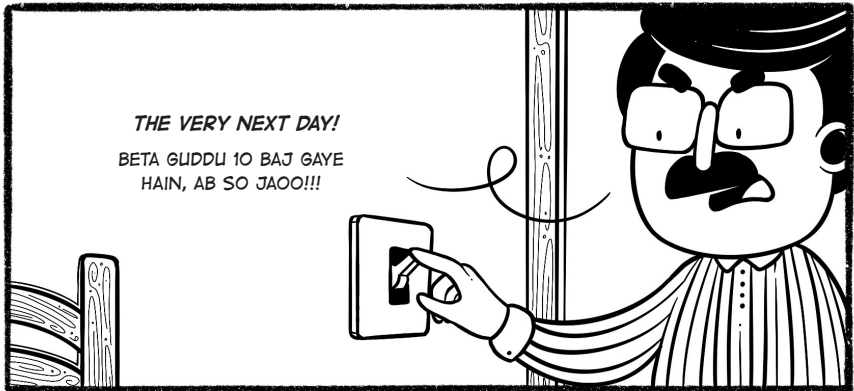




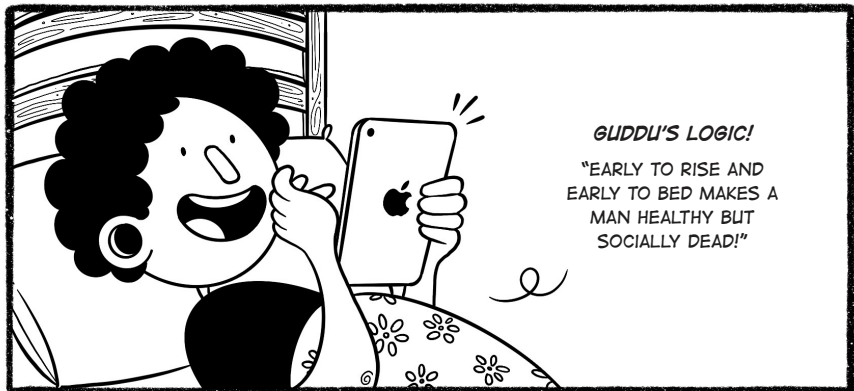




BETA GUDDU 10 BAJ GAYE
HAIN, AB SO JAO!

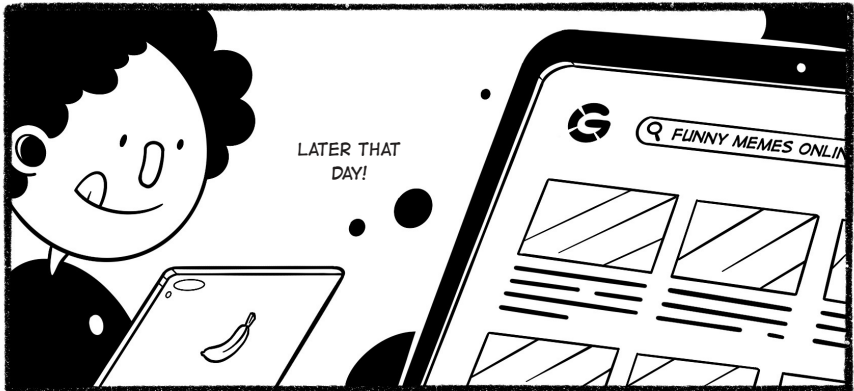
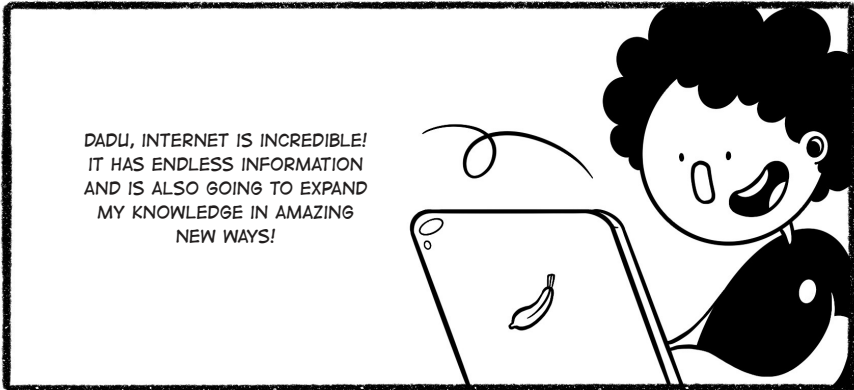


THE VERY NEXT DAY!
BETA GUDDU 10 BAJ GAYE
HAIN, AB SO JAOO!!!

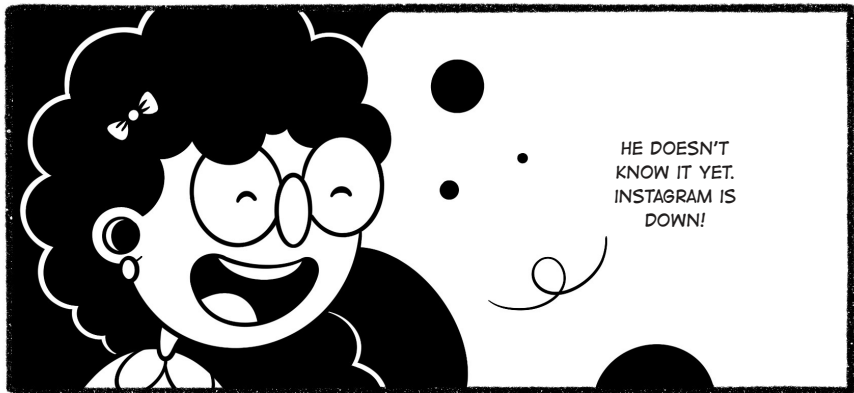
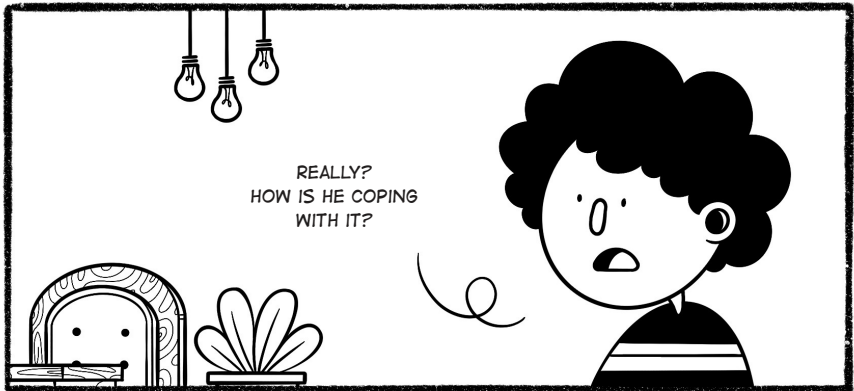
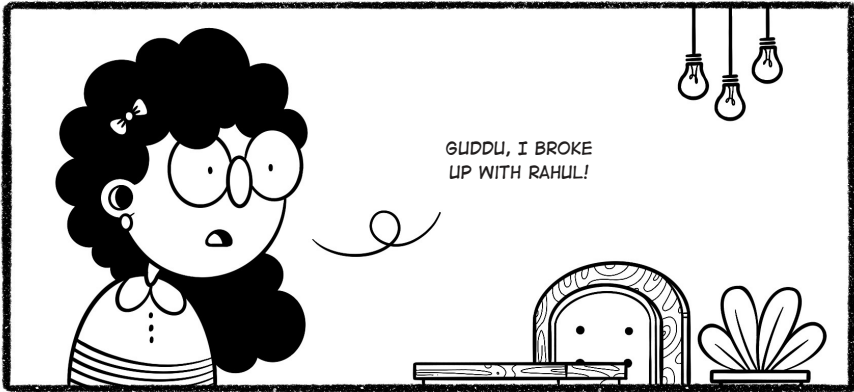


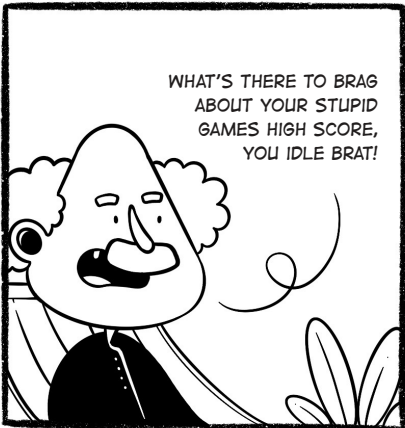
GUDDU'S LOGIC!
"EARLY TO RISE AND
EARLY TO BED MAKES A
MAN HEALTHY BUT
SOCIALY DEAD!"

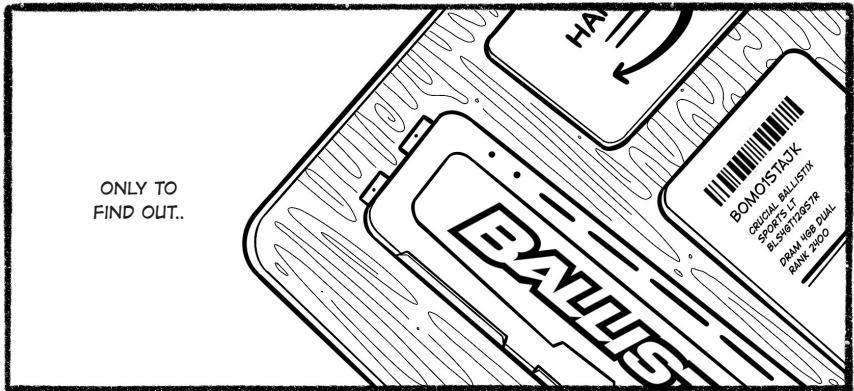




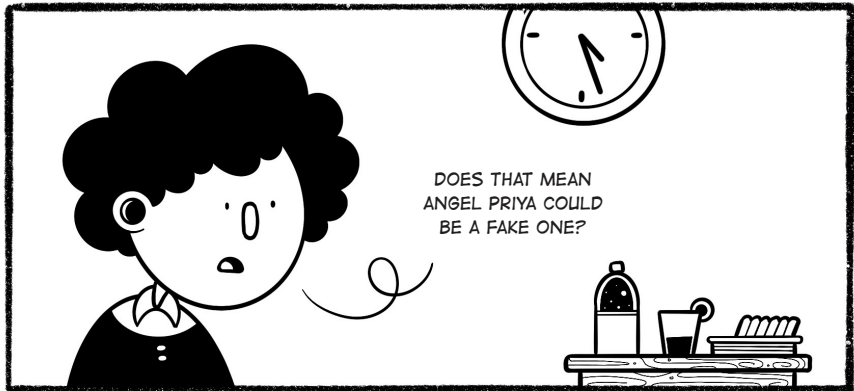
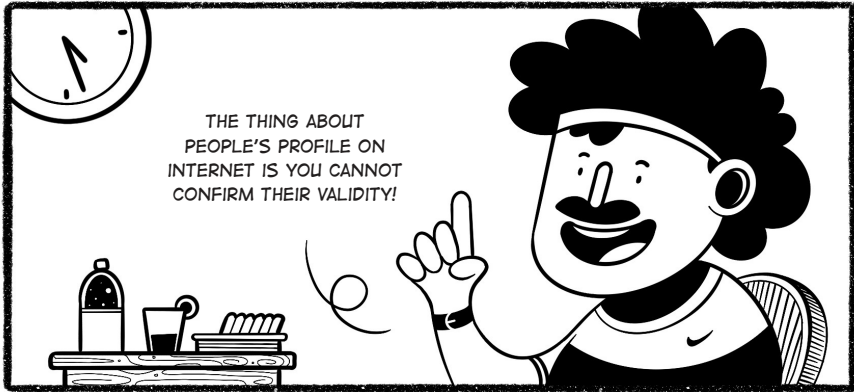


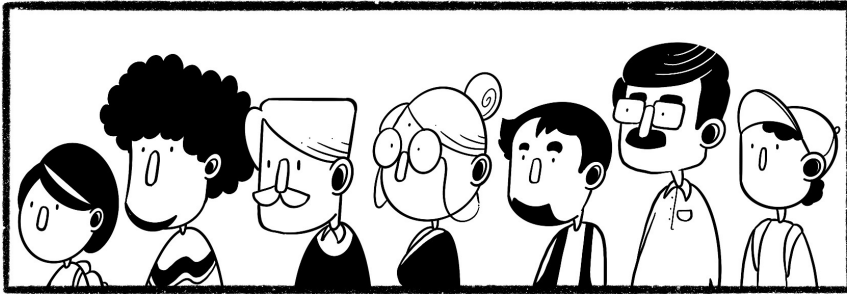


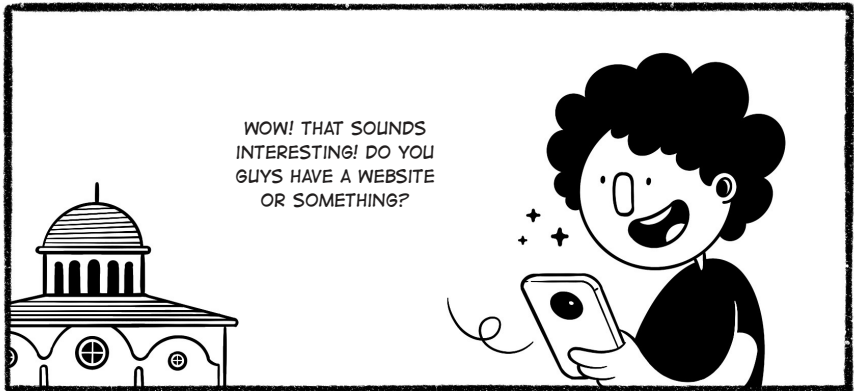
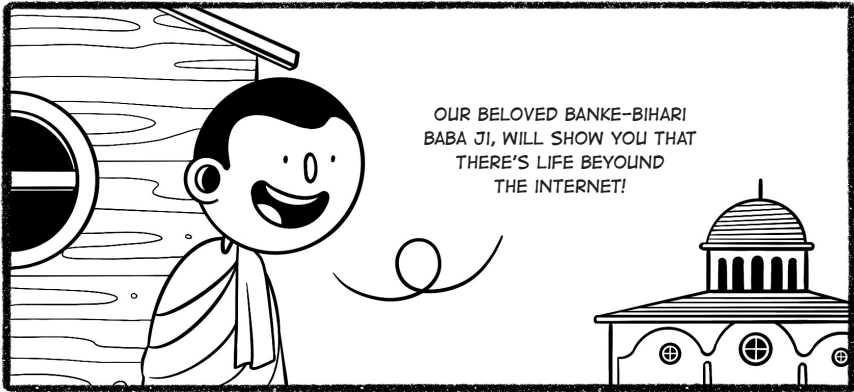


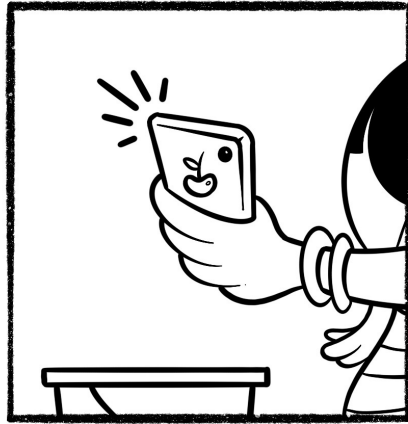
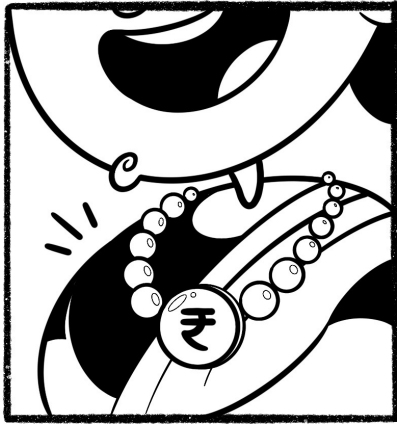


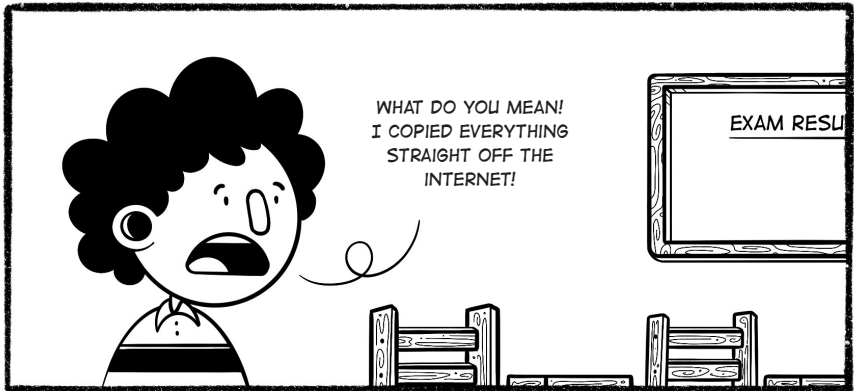
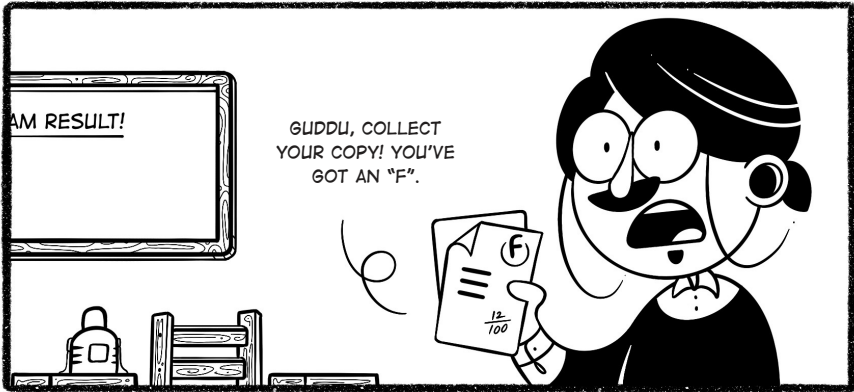


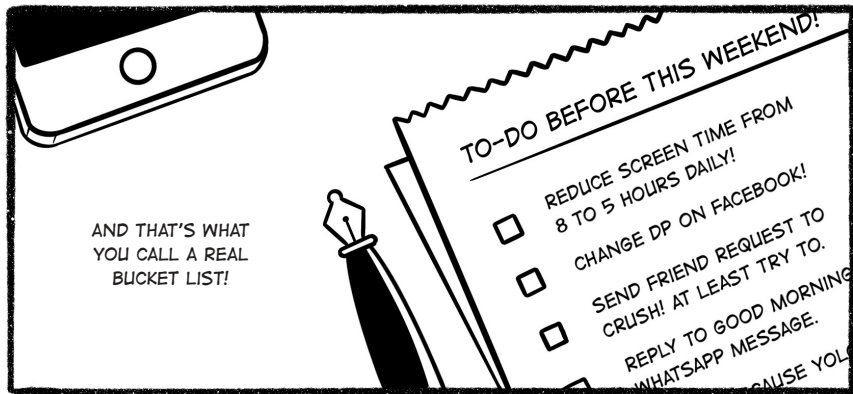
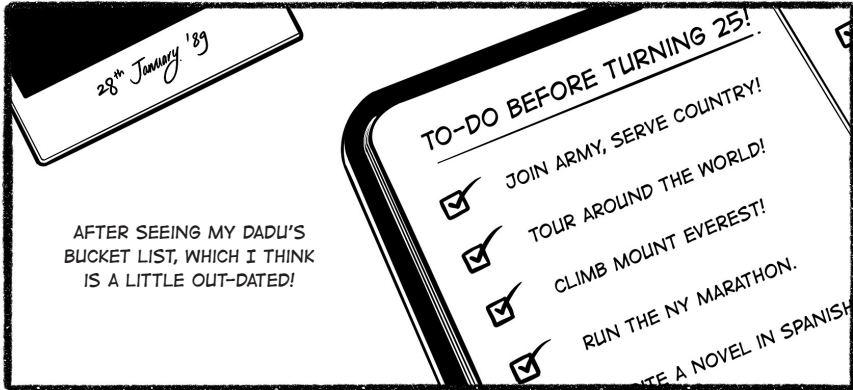


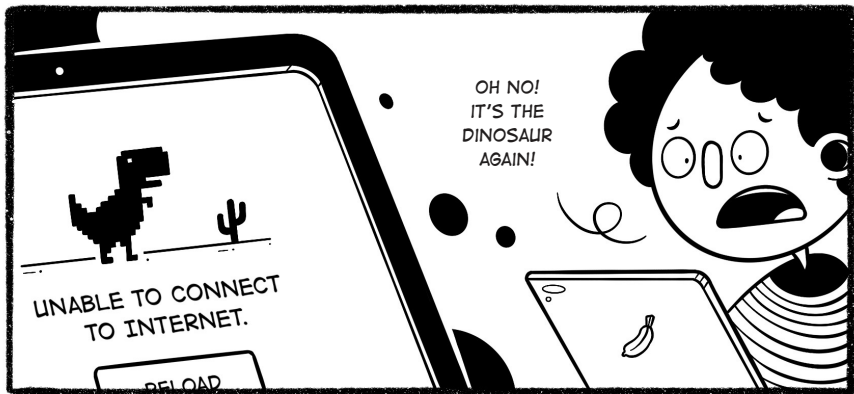
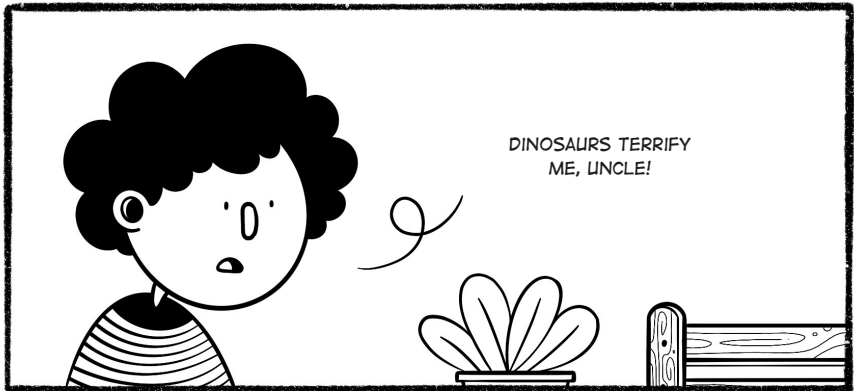
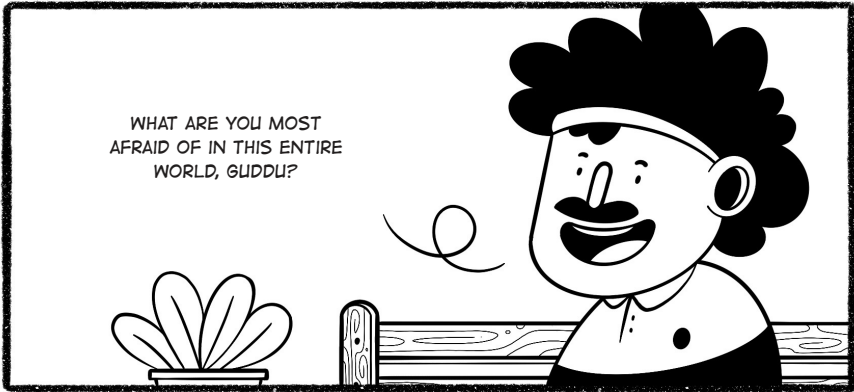














PROJECT TWO

GUIDED BY PROF. PRASAD BOKIL
CO-GUIDED BY PROF. PHANI TETALI

IDC, IIT BOMBAY