



# KINGDOM ANIMALIA

An illustrated collection of threatened  
species across India

ILLUSTRATED BY  
RIYA ALLEN





# KINGDOM ANIMALIA

An illustrated collection of threatened  
species across India

ILLUSTRATED BY  
RIYA ALLEN

# WHAT WE STAND TO LOSE

In India, the primary threats are loss of habitats due to tea and coffee plantations along the hills, in the coastal areas loss of mangroves due to aquaculture and increased human settle  
In India, the primary threats are loss of habitats due to tea and coffee plantations along the hills, in the

In India, the primary threats are loss of habitats due to tea and coffee plantations along the hills, in the coastal areas loss of mangroves due to aquaculture and increased human settle

## TOGETHER WE CAN MAKE A DIFFERENCE !









# THE CHINESE PANGOLIN

AONYX CINEREUS | MAMALIA



Pangolins have rarely been bred successfully, so populations will continue to fall if nothing is done to stop poachers. Their disappearance could have serious effects on agriculture in some communities.



## BUT WHY?

Pangolins are the most trafficked mammals in the world.



## FUN FACT!

When threatened, they curl up into a armored ball, but their scales are useless against poachers who can just pick them up.





# THE RESPLENDENT SHRUB FROG

RAORCHESTES  
RESPLENDENS | AMPHIBIA



## BUT WHY?

In India, the primary threats are loss of habitats due to tea and coffee plantations along the hills, in the c

## FUN FACT!

In India, the primary threats are loss of habitats due to tea and coffee plantations along the hills, in the coastal



ALMOST ... THERE..



# THE

AONYX CINEREUS | MAMALIA





# THE ANAIMALAI FLYING FROG

RHACOPHORUS  
PSEUDOMALABARICUS | REPTILIA



## BUT WHY?

In India, the primary threats are loss of habitats due to tea and coffee plantations along the hills, in the coastal areas loss of mangroves due to aquaculture and increased human settlements.

## FUN FACT!

In India, the primary threats are loss of habitats due to tea and coffee plantations along the hills, in the coastal areas loss of mangroves for the exotic pet trade.



## BUT WHY?

In India, the primary threats are loss of habitats due to tea and coffee plantations along the hills, in the coastal areas loss of mangroves due to aquaculture and increased human settlements.

## FUN FACT!

In India, the primary threats are loss of habitats due to tea and coffee plantations along the hills, in the coastal areas loss of mangroves for the exotic pet trade.



# THE JEYPORE GROUND GECKO

AONYX CINEREUS | MAMALIA





# THE NORTHERN RIVER TERAPIN

BATAGUR BASKA | REPTILIA



## BUT WHY?

In India, the primary threats are loss of habitats due to tea and coffee plantations along the hills, in the coastal areas loss of mangroves due to aquaculture and increased human settlements.

## FUN FACT!

In India, the primary threats are loss of habitats due to tea and coffee plantations along the hills, in the coastal areas loss of mangroves for the exotic pet trade.



## BUT WHY?

In India, the primary threats are loss of habitats due to tea and coffee plantations along the hills, in the coastal areas loss of mangroves due to aquaculture and increased human settlements.

## FUN FACT!

In India, the primary threats are loss of habitats due to tea and coffee plantations along the hills, in the coastal areas loss of mangroves for the exotic pet trade.



# THE RED CROWNED ROOFED TURTLE

BATAGUR KACHUGA | REPTILIA





# THE HAWKSBILL SEA TURTLE

ERETMOCHELYS  
IMBRICATA | REPTILIA



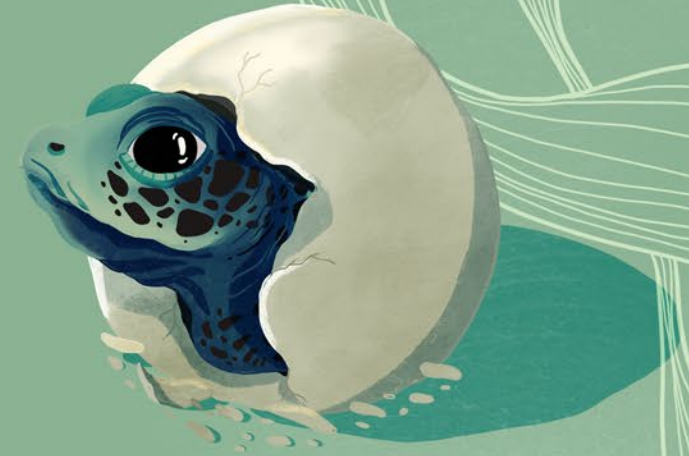
WANNA TRY SOME TURTLELY  
YUM SEA SPONGES ?



In India, the primary threats are loss of habitats due to tea and coffee plantations along the hills, in the coastal areas loss of mangroves due to aquaculture and increased human settlements.

In India, the primary threats are loss of habitats due to tea and coffee plantations along the hills, in the coastal areas loss of mangroves for the exotic pet trade.

In India, the primary threats are loss of habitats due to tea and coffee plantations along the hills, in the coastal areas loss of mangroves due to aquaculture and increased human settlements. In India, the primary threats are loss of habitats



## BUT WHY?

In India, the primary threats are loss of habitats due to tea and coffee plantations along the hills, in the coastal areas loss of mangroves for the exotic pet trade.

In India, the primary threats are loss of habitats due to tea and coffee plantations along the hills, in the coastal areas loss of mangroves for the exotic pet trade.



## FUN FACT!

In India, the primary threats are loss of habitats due to tea and coffee plantations along the hills, in the coastal areas loss of mangroves for the exotic pet trade.



# THE JENKIN'S SHREW

CROCIDURA JENKINSI | MAMMALIA



## BUT WHY?

In India, the primary threats are loss of habitats due to tea and coffee plantations along the hills, in the coastal areas loss of mangroves due to aquaculture and increased human settlements.

## FUN FACT!

In India, the primary threats are loss of habitats due to tea and coffee plantations along the hills, in the coastal areas loss of mangroves for the exotic pet trade.

# THE PYGMY HOG

PORCULA SALVANIA | MAMMALIA



## BUT WHY?

In India, the primary threats are loss of habitats due to tea and coffee plantations along the hills, in the coastal areas loss of mangroves for the exotic pet trade.

## FUN FACT!

In India, the primary threats are loss of habitats due to tea and coffee plantations along the hills, in the coastal areas loss of mangroves due to aquaculture and increased human settlements.



# THE GHARIAL

GAVIALIS  
GANGETICUS | MAMMALIA



## BUT WHY?

In India, the primary threats are loss of habitats due to tea and coffee plantations along the hills, in the coastal areas loss of mangroves due to aquaculture and increased human settlement

## FUN FACT!

In India, the primary threats are loss of habitats due to tea and coffee plantations along the hills, in the c



In India, the primary threats are loss of habitats due to tea and coffee plantations along the hills, in the coastal areas loss of mangroves due to aquaculture and increased human settlement

In India, the primary threats are loss of habitats due to tea and coffee plantations along the hills, in the coastal areas loss of mangroves due to aquaculture and increased human settlements.

trade. rimary threats are loss of habitats due to tea an India, the primary threats are loss of habitats due to tea and coffee plantations along the hills, in the coa





# THE KASHMIR STAG

CERVUS HANGLU | MAMMALIA



In India, the primary threats are loss of habitats due to tea and coffee plantations along the hills, in the coastal areas loss of mangroves due to aquaculture and increased human settlement  
In India, the primary threats are loss of habitats due to tea and coffee pl



## BUT WHY?

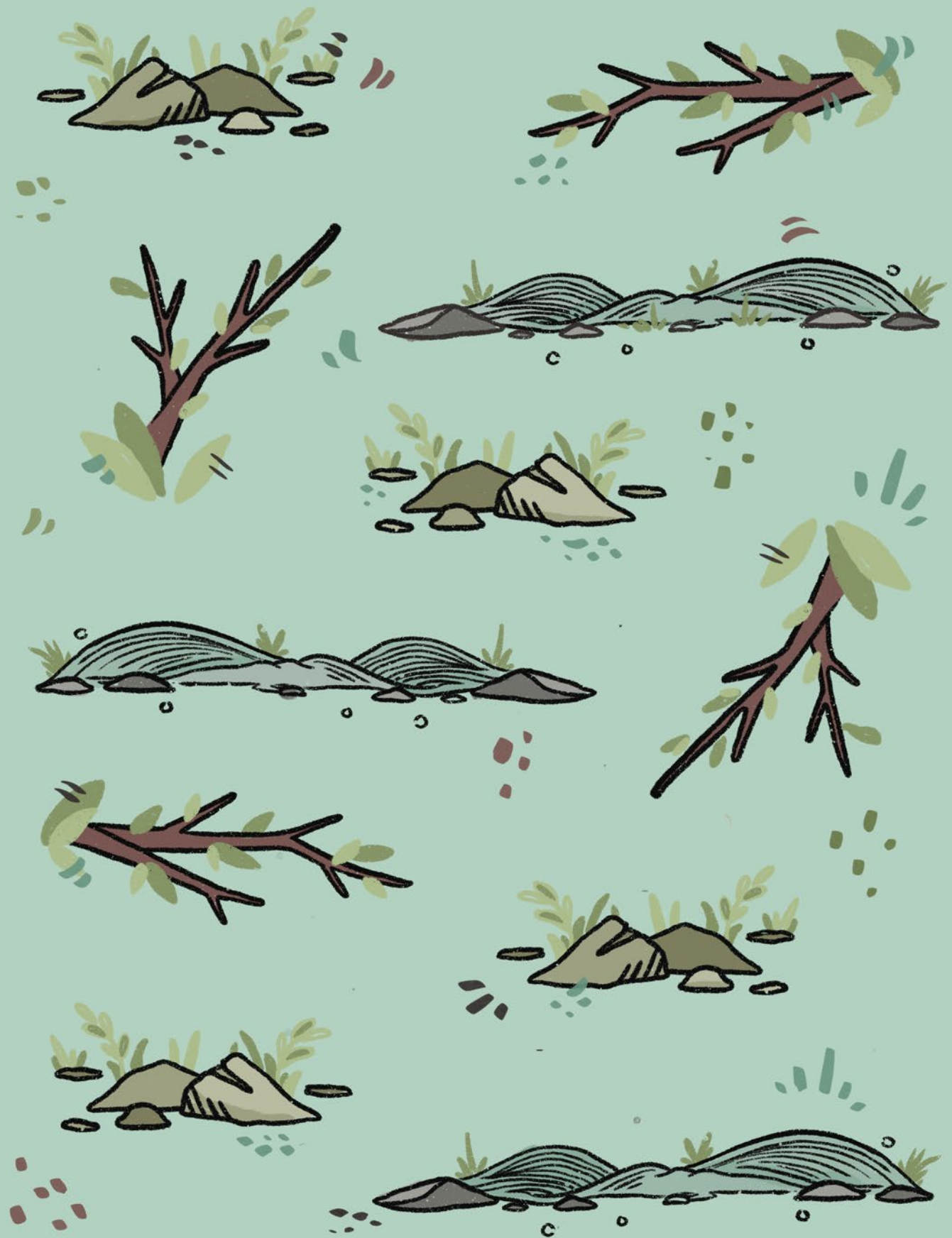
In India, the primary threats are loss of habitats due to tea and coffee plantations along the hills, in the c

## FUN FACT!

In India, the primary threats are loss of habitats due to tea and coffee plantations along the hills, in the coastal areas loss of mangroves due to aquaculture and increased human settlement









# THE POONA SKINK

EURYLEPIS  
POONAENSIS | REPTILIA



## BUT WHY?

In India, the primary threats are loss of habitats due to tea and coffee plantations along the hills, in the c

## FUN FACT!

In India, the primary threats are loss of habitats due to tea and coffee plantations along the hills, in the coastal areas loss of mangroves due to aquaculture and increased human settlem

## BUT WHY?

In India, the primary threats are loss of habitats due to tea and coffee plantations along the hills, in the c

## FUN FACT!

In India, the primary threats are loss of habitats due to tea and coffee plantations along the hills, in the coastal areas loss of mangroves due to aquaculture and increased human settlem

# THE PERROTET'S VINE SNAKE

AHAETULLA  
PERROTETI | REPTILIA





THE



AONYX CINEREUS | MAMALIA



## BUT WHY?

In India, the primary threats are loss of habitats due to tea and coffee plantations along the hills, in the coastal areas loss of mangroves due to aquaculture and increased human settlements.

## FUN FACT!

In India, the primary threats are loss of habitats due to tea and coffee plantations along the hills, in the coastal areas loss of mangroves for the exotic pet trade.



## BUT WHY?

In India, the primary threats are loss of habitats due to tea and coffee plantations along the hills, in the coastal areas loss of mangroves due to aquaculture and increased human settlements.

## FUN FACT!

In India, the primary threats are loss of habitats due to tea and coffee plantations along the hills, in the coastal areas loss of mangroves for the exotic pet trade.

THE BOULENGER'S  
**DASIA**

DASIA SUBCAERULEA | MAMMALIA







WELL, IT'S BEDTIME  
SOMEWHERE!

In India, the primary threats are loss of habitats due to tea and coffee plantations along the hills, in the coastal area

s loss of mangroves due to aquaculture and increased human settlementsPoaching for pelt has been reported from across

In India, the primary threats are loss of habitats due to tea and coffee plantations along the hills, in the coastal area

s loss of mangroves due to aquaculture and increased human settlementsPoaching for pelt has been reported from across



# BUT WHY?

In India, the primary threats are loss of habitats due to tea and coffee plantations along the hills, in the coastal areas loss of mangroves due to aquaculture and increased human settlem

# FUN FACT!

In India, the primary threats are loss of habitats due to tea and coffee plantations along the hills, in the c







## BUT WHY?

In India, the primary threats are loss of habitats due to tea and coffee plantations along the hills, in the coastal areas loss of mangroves due to aquaculture and increased human settlement

## FUN FACT!

In India, the primary threats are loss of habitats due to tea and coffee plantations along the hills, in the c



## BUT WHY?

In India, the primary threats are loss of habitats due to tea and coffee plantations along the hills, in the coastal areas loss of mangroves due to aquaculture and increased human settlement

## FUN FACT!

In India, the primary threats are loss of habitats due to tea and coffee plantations along the hills, in the c





THE

AONYX CINEREUS | MAMALIA



## BUT WHY?

In India, the primary threats are loss of habitats due to tea and coffee plantations along the hills, in the coastal areas loss of mangroves due to aquaculture and increased human settlements.

## FUN FACT!

In India, the primary threats are loss of habitats due to tea and coffee plantations along the hills, in the coastal areas loss of mangroves for the exotic pet trade.

## BUT WHY?

In India, the primary threats are loss of habitats due to tea and coffee plantations along the hills, in the coastal areas loss of mangroves due to aquaculture and increased human settlements.

## FUN FACT!

In India, the primary threats are loss of habitats due to tea and coffee plantations along the hills, in the coastal areas loss of mangroves for the exotic pet trade.

THE

NILGIRI  
TAHR

NILGIRITRAGUS  
HYLOCRIUS | MAMMALIA





# THE WILD WATER BUFFALO

ADONYX CINEREUS | MAMALIA



In India, the primary threats are loss of habitats due to tea and coffee plantations along the hills, in the coastal areas loss of mangroves due to aquaculture and increased human settlements.

In India, the primary threats are loss of habitats due to tea and coffee plantations along the hills, in the coastal areas loss of mangroves due to aquaculture and increased human settlements.

## BUT WHY?

In India, the primary threats are loss of habitats due to tea and coffee plantations along the hills, in the coastal areas loss of mangroves due to aquaculture and increased human settlements.

## FUN FACT!

In India, the primary threats are loss of habitats due to tea and coffee plantations along the hills, in the coastal areas loss of mangroves for the exotic pet trade.









# THE CLOUDED LEOPARD

NEOFELIS NEBULOSA | MAMMALIA



Clouded leopards are the smallest of the big cats, they are secretive and rare in the wild, preferring to remain alone and hidden from view. Due to this, scientists don't know how many of them exactly are alive today, but it is for sure that the numbers are diminishing. These nocturnal animals are found in the North Eastern Part of India.



YOU KNOW WHO LOOKS  
GOOD IN A LEOPARD PRINT ?  
LEOPARDS ! THAT'S ALL ,

## BUT WHY?

They are extensively hunted for their beautiful coat, trade in bones for medicines, meat for exotic dishes and live animals for the illegal pet trade.



## FUN FACT !

The clouded leopard can open their jaws wider than any other cat Their jaw structure is similar to that of the extinct Sabertooth cat.

"Nebulosa" means cloudy in latin.





THE

AONYX CINEREUS | MAMMALIA



## BUT WHY?

In India, the primary threats are loss of habitats due to tea and coffee plantations along the hills, in the coastal areas loss of mangroves due to aquaculture and increased human settlements.

## FUN FACT!

In India, the primary threats are loss of habitats due to tea and coffee plantations along the hills, in the coastal areas loss of mangroves for the exotic pet trade.

THE FOUR HORNED  
ANTELOPE

TETRAGERUS  
QUADRICORNIS | MAMMALIA



## BUT WHY?

In India, the primary threats are loss of habitats due to tea and coffee plantations along the hills, in the coastal areas loss of mangroves for the exotic pet trade.

## FUN FACT!

In India, the primary threats are loss of habitats due to tea and coffee plantations along the hills, in the coastal areas loss of mangroves due to aquaculture and increased human settlements.





# THE ORIENTAL SMALL CLAWED OTTER

AONYX CINEREUS | MAMMALIA



In India, the primary threats are loss of habitats due to tea and coffee plantations along the hills, in the coastal areas loss of mangroves due to aquaculture and increased human settlements. Poaching for pelt has been reported from across

DO YOU GUYS  
SMELL FISH?

## BUT WHY?

In India, the primary threats are loss of habitats due to tea and coffee plantations along the hills, in the coastal areas loss of mangroves due to aquaculture and increased human settlements.

Poaching for pelt has been reported from across the Western Ghats in south India. Due to their physical appearance they are also highly desirable for the exotic pet trade.

## FUN FACT!

These otters are the most social amongst the otter species and live in extended family groups numbering 12-20 individuals. Oriental small-clawed otters are carnivores, they eat frogs, crabs, shellfish and crayfish.

WILL YOU BE MY  
SIGNIFICANT OTTER?





## BUT WHY?

In India, the primary threats are loss of habitats due to tea and coffee plantations along the hills, in the coastal areas loss of mangroves due to aquaculture and increased human settlements.

## FUN FACT!

In India, the primary threats are loss of habitats due to tea and coffee plantations along the hills, in the coastal areas loss of mangroves for the exotic pet trade.



## BUT WHY?

In India, the primary threats are loss of habitats due to tea and coffee plantations along the hills, in the coastal areas loss of mangroves for the exotic pet trade.

TAKIN IT SLOW  
AND STEADY !

## FUN FACT!

In India, the primary threats are loss of habitats due to tea and coffee plantations along the hills, in the coastal areas loss of mangroves due to aquaculture and increased human settlements.





# THE DUGONG

DUGONG DUGON | MAMMALIA



## BUT WHY?

In India, the primary threats are loss of habitats due to tea and coffee plantations along the hills, in the coastal areas loss of mangroves due to aquaculture and increased human settlements.

Poaching for pelt has been reported from across the Western Ghats in south India. Due to their physical appearance they are also highly desirable for the exotic pet trade.

## FUN FACT!

In India, the primary threats are loss of habitats due to tea and coffee plantations along the hills, in the coastal areas loss of mangroves for the exotic pet trade.







## OUR UNSUNG GREEN ARMY

This page is dedicated to the watchers, trackers, forest guards, rangers etc., who are the front end of wild life protection.

Each day they face extraordinary risk crossings paths with poachers, sand and timber mafia. They spend most of the time in very unwelcoming environments.

Many of them even create enduring bonds with the animals in their charge.





# KINGDOM ANIMALIA

In India, the primary threats are loss of habitats due to tea and coffee plantations along the hills, in the coastal areas loss of mangroves due to aquaculture and increased human settlement. In India, the primary threats are loss of habitats due to tea and coffee plantations along the hills, in the

in India, the primary threats are loss of habitats due to tea and coffee plantations along the hills, in the coastal areas loss of mangroves due to aquaculture and increased human settlement.



0 705632 085943 >